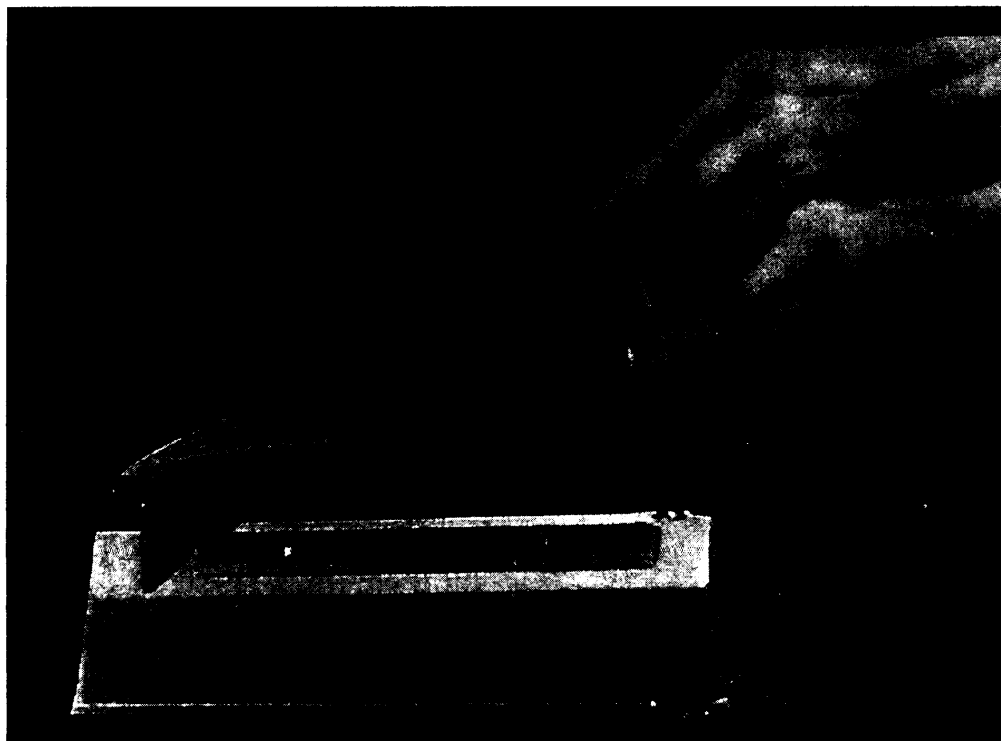


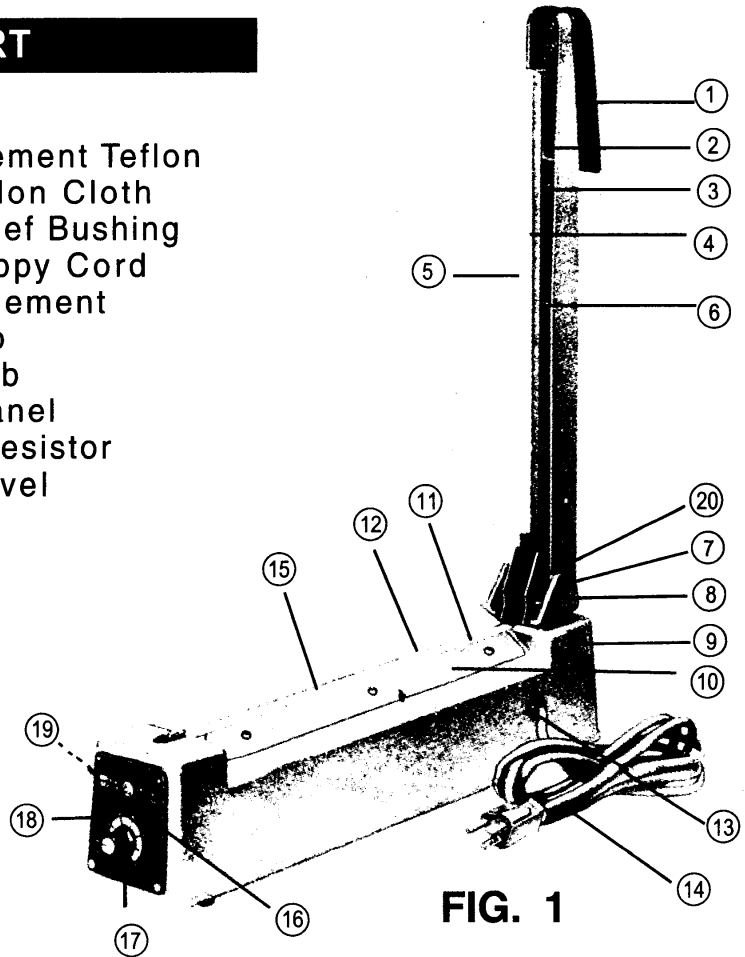
# IMPULSE SEALER

## INSTRUCTION MANUAL

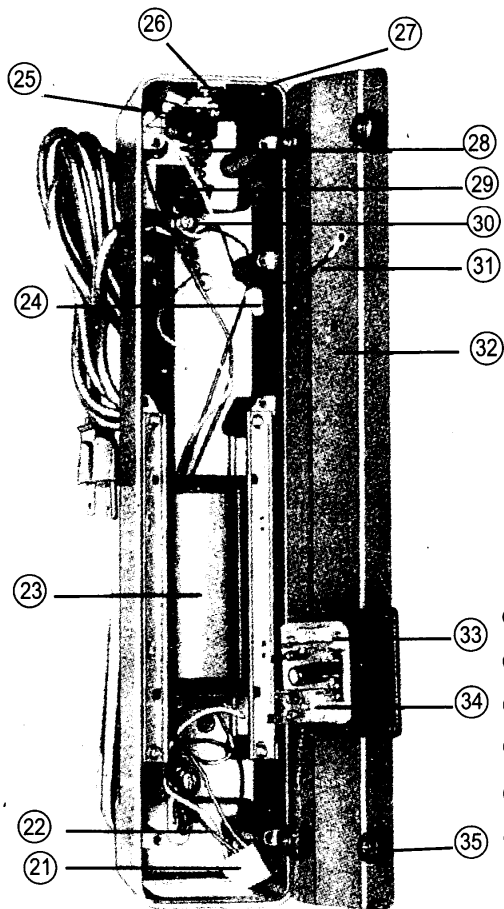


# 1 DESCRIPTION OF EVERY PART

- |                  |                         |
|------------------|-------------------------|
| ① Handle Knob    | ⑪ Lower Element Teflon  |
| ② Platen Arm     | ⑫ Upper Teflon Cloth    |
| ③ Platen Spring  | ⑬ Strain Relief Bushing |
| ④ Platen         | ⑭ Power Supply Cord     |
| ⑤ Silicon Rubber | ⑮ Heating Element       |
| ⑥ Swivel         | ⑯ Pilot Lamp            |
| ⑦ Hinge          | ⑰ Timer Knob            |
| ⑧ Hinge Bracket  | ⑱ Control Panel         |
| ⑨ Enclosure      | ⑲ Variable Resistor     |
| ⑩ Metal Plate    | ⑳ Switch Level          |



**FIG. 1**

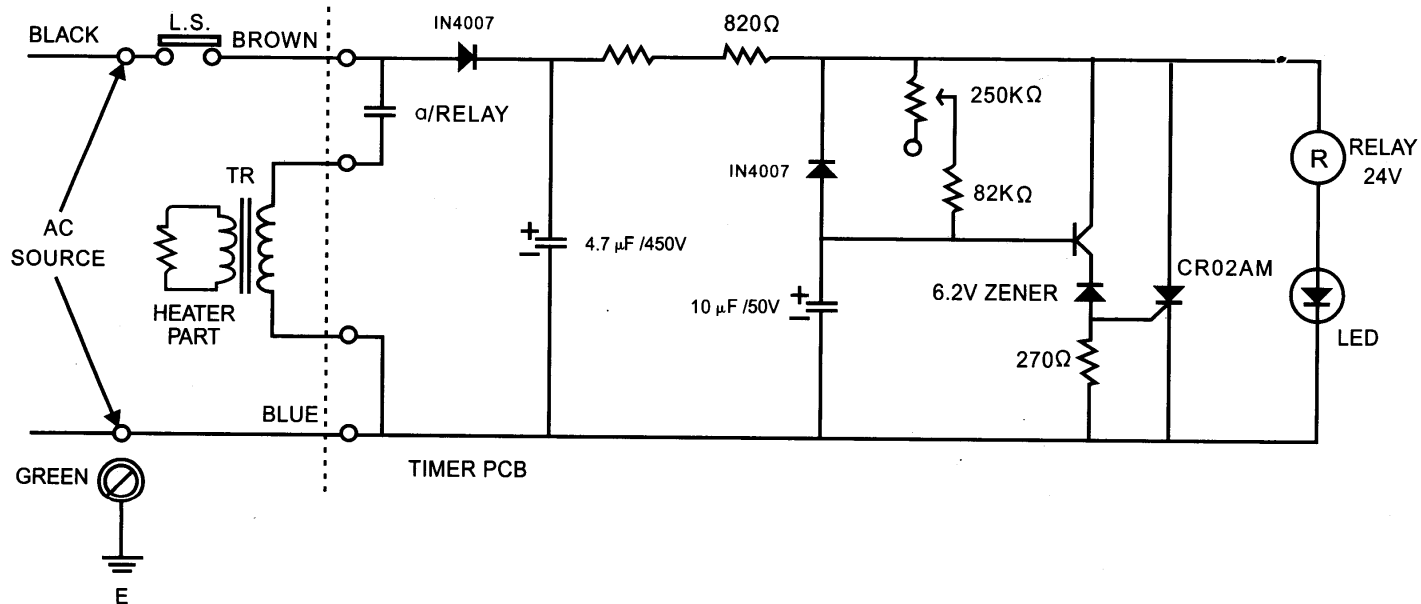


**USE ONLY GENUINE  
REPLACEMENT PARTS**

**FIG. 2**

- |                        |                               |
|------------------------|-------------------------------|
| ②① Wire Connector      | ②⑨ Switch Lever (Bottom View) |
| ②② Internal Wiring     | ③① Heater Terminal Assembly   |
| ②③ Heater Transformer  | ③② Grounding Wire             |
| ②④ Connectors          | ③③ Cover Plate                |
| ②⑤ Microswitch         | ③④ Printed Wiring Board       |
| ②⑥ Switch Bracket      | ③⑤ Relay                      |
| ②⑦ Switch Insulation   | ③⑥ Rubber Foot & Screw        |
| ②⑧ Switch Lever Spring |                               |

## 2 CONNECTION DIAGRAM



### **3 PURPOSE**

This Impulse Sealer is to insure a water tight and air tight seal for. effective autoclaving and sterilization procedure.

### **4 CHARACTERISTIC**

*Compact Design*

*Strong Water Tight Seal*

*Fast Operating*

*Power Saving*

*Precision Electronic Circuit*

*Long Life*

## **5 OPERATION**

- Plug cord into AC outlet. No switch necessary, Machine will operate only when arm is depressed. Regulate the timer according to thickness of material to be sealed . Use a higher-number for thicker material. Pull handle down. Sealing takes place when light is on, Leave down for additional second after light goes off for a better seal.
- Use a lower number in case seal burns through
- Raise to higher number when seal isn't tight
- Should bag stick to silicon rubber, you did not give enough cooling time.
- Once you set the time. no need to reset as the machine will remain constant and unchanged.
- No need to remove plug from socket as machine will not operate unit until handle is lowered. No Power is consumed.

## **6** NOTES

- Always keep sealing platform clean. Leaving residue will reduce life of element, teflon, and silicon rubber.
- Never use moisture to clean sealing surface.
- Replace torn teflon at once. A torn cloth will short circuit the element and damage it. Every time you replace the element, replace the lower and upper teflon cloth.
- For best operation, use only genuine replacement parts.
- A worn silicon rubber will influence the seal, change the silicon when worn or burned.
- Unplug wire when servicing the machine.

## **7** SPARE PARTS

ACCESSORIES	Q'TY
HEATING ELEMENT	2
UPPER CLOTH	2

## HEATING ADJUSTMENT LIST

MATERIAL INDICATOR	POLYETHYLENE	POLYPROPYLENE OR HIGH-HEAT FILM
1	UNDER 0.06m/m	
2	UNDER 0.1m/m	
3	UNDER 0.14m/m	
4	UNDER 0.2m/m	UNDER 0.03m/m
5		UNDER 0.044m/m
6		UNDER 0.06m/m
7		UNDER 0.08m/m