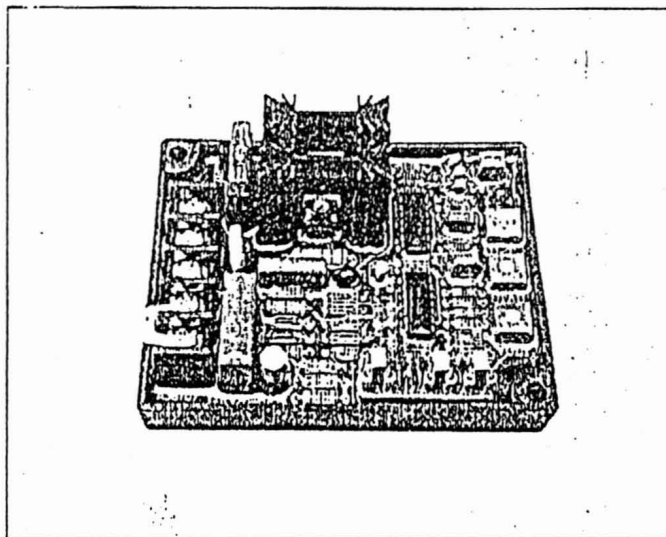


WT-8A

Universal 8 Amp 1/2 Wave Self Excited
Dip-Switch Programmable Automatic
Voltage Regulator

Features

- $< \pm 1\%$ Regulation
- 110/220/400 VAC Programmable Input
- Rugged Compact Design
- With Under Frequency Protection
- Soft Start Voltage Ramping
- EMI Suppression
- Built-in High Capacity 8Amp Fuse



Specifications

Sensing Input Voltage	110/220/400VAC, 1 phase 2 wire	Voltage Build-up	Residual volts at AVR terminal $> 5VAC$
Power Input Voltage	100~260VAC, 1 phase 2 wire	External Volts Adjustment	$\pm 7\%$ with 1K Ω 1 watt trimmer
Output Voltage	Max. 90VDC @ 240VAC input	Soft Start Ramp Time	2sec.
Output Current	Continuous 3A Intermittent 5A for 10SEC.	Unit Power Dissipation	Max. 8Watt
Resistance	Min. 15 Ω Max. 100 Ω	EMI Suppression	Internal Electromagnetic Interference Filtering
		Thermal Drift	0.03% per $^{\circ}C$ change in AVR ambient
		Under Frequency Protection (Factory Settings)	60Hz system presets knee point at 55Hz 50Hz system presets knee point at 45Hz

Volts Regulation $< \pm 1\%$ (with 4% engine governing)

Environment

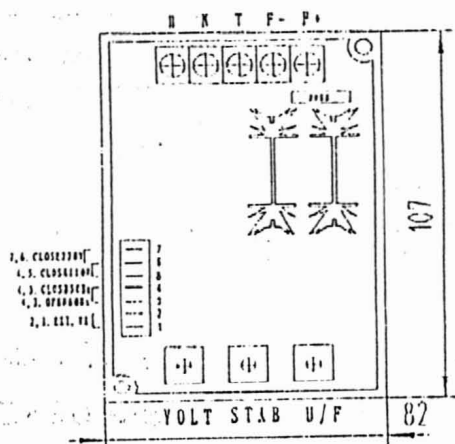
Vibration 3G @ 100~2K Hz

Operating Temperature $-40 \sim 65^{\circ}C$

Relative Humidity $< 95\%$

Storage Temperature $-40 \sim 85^{\circ}C$

Mechanical Specifications



AVR Controls

VOLTS Voltage Adjustment

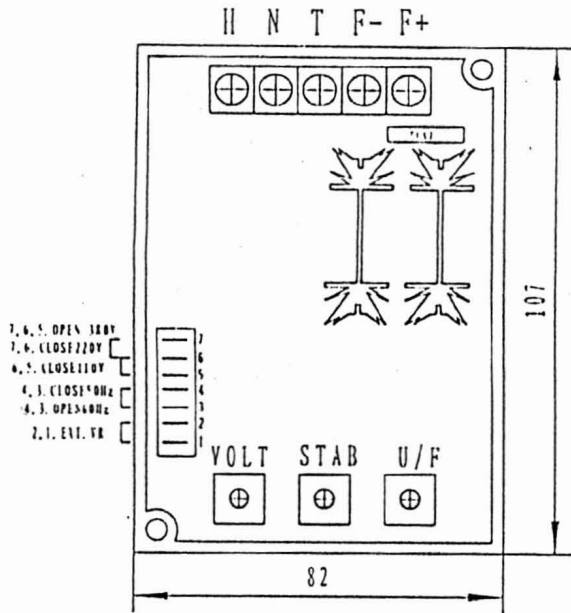
STAB Stability Adjustment

U/F TO Set the U/F *Knee Point

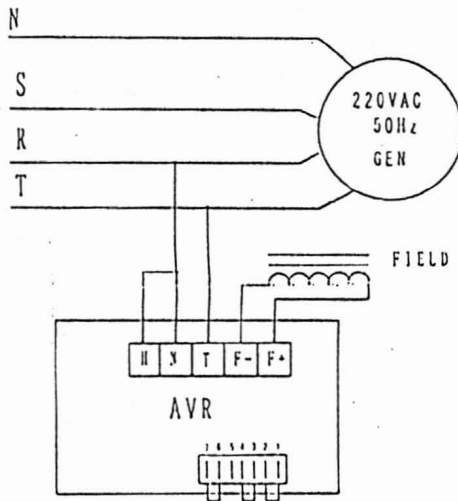
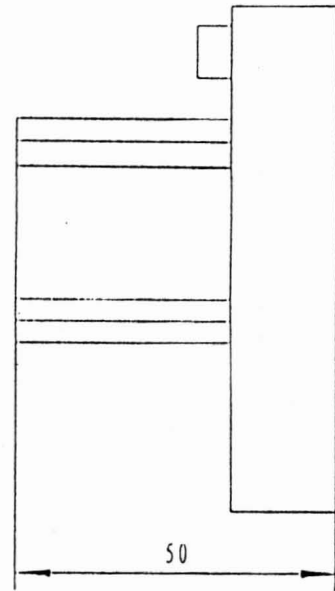
*U/F: Under Frequency Protection

Physical Specifications

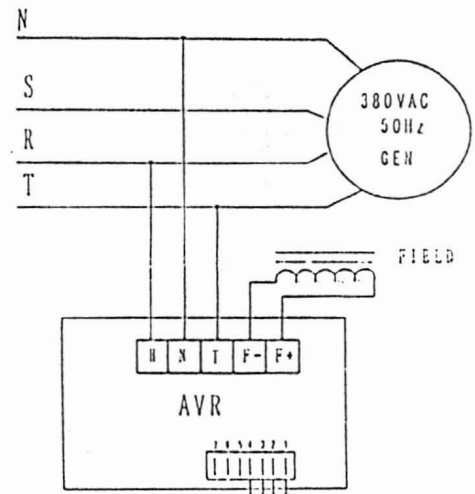
Dimensions 107.0(L) 82.0(W) 50.0(H) mm



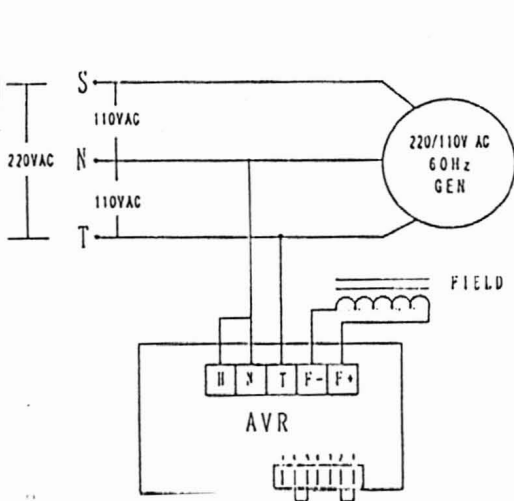
(1) (MM)



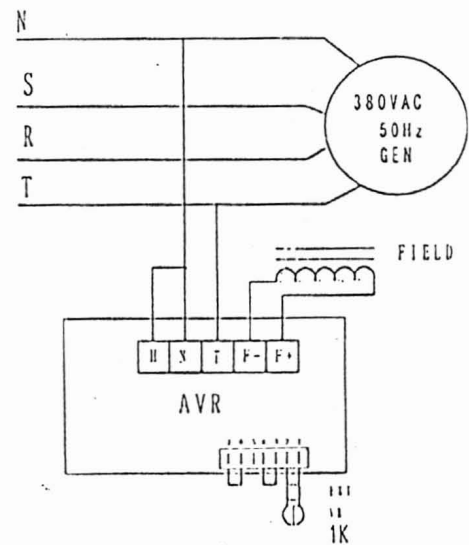
(2)



(3)



(4)



(5)