

BRAND MODEL 295 – SD2100 DIESEL ENGINE PARTS CATALOGUE

FOREWORD

This 《Illustrated Part List of Model 295 Brand Diesel Engine》 is compiled according to the drawings of the diesel engine now our works is making. It can be served as a guide for our users to be familiar with the construction and to order spare parts of the engine.

Every illustrated page has the parts name list and brackets behind the assembly name to indicate which type of diesel engine this part belongs to.

For those parts mounted in the same position but used for different types of diesel engine, we underline and give out which type of diesel engine use this part by writing the model of diesel engine in brackets. For those underlined parts which have the same Ser. No. with the original parts, a “*” is marked at the upper - right of the Ser. No. If two parts are underlined and have the same Ser. No., the first is marked a “*”, the second is marked a “**” and written in the name list individually. How many parts are used in one type of diesel engine is indicated in the “Qty” of the name list. In the “Qty”, if blank space appears, it shows that this type of diesel engine does not use this part.

If one part appears twice or more times on the same illustrated page the same Ser. No. is given and made a “○” around the Ser. No. and only listed once in the name list.

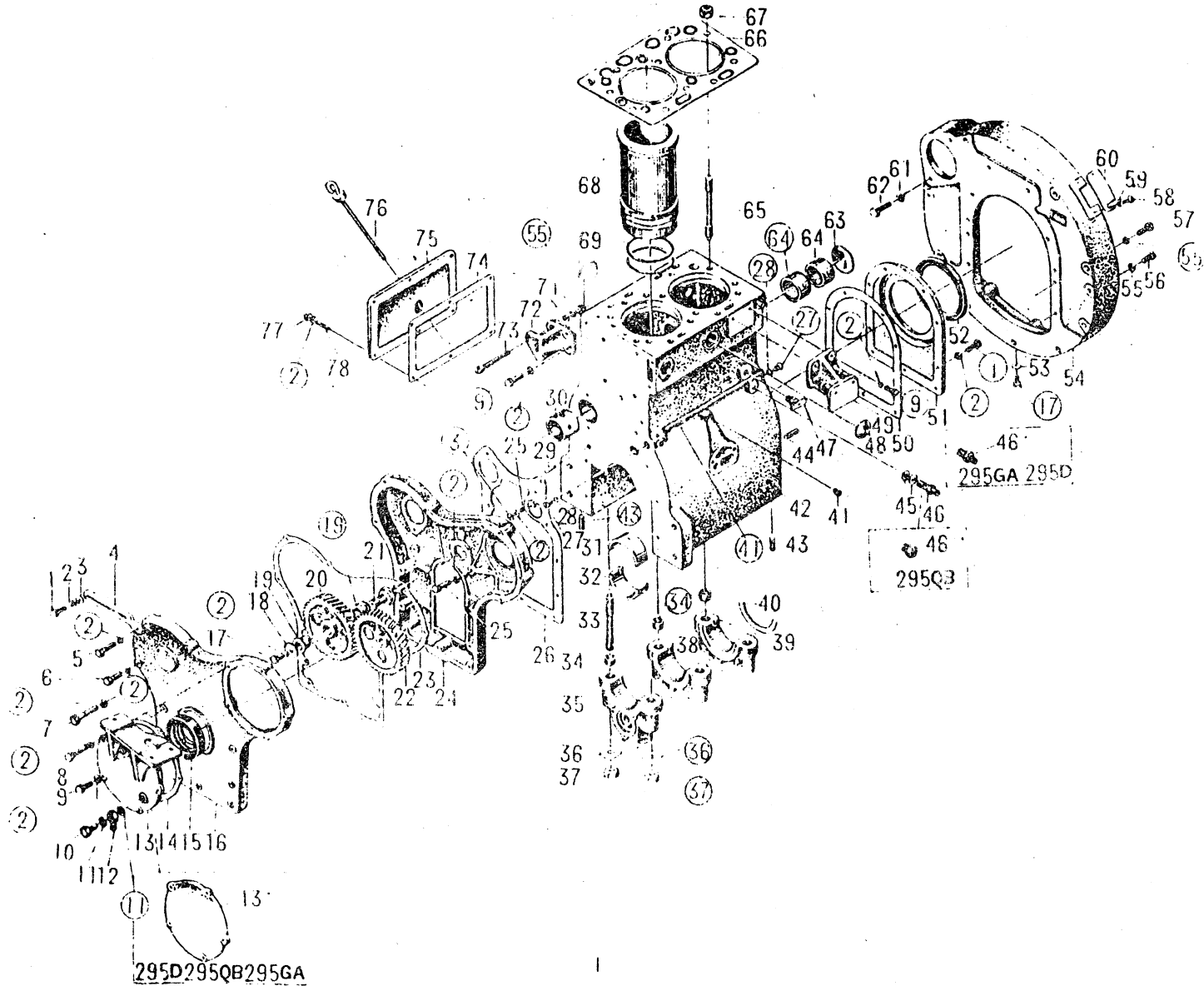
CONTENTS

(295T、295GA、295D、295QB)	Cylinder Block Assembly——I	(2)
(295C、295GJ、295C)	Cylinder Block Assembly) —— II	(7)
(295T、295G、295GA、295GJ、295D、295C、295QB)	Oil Sump Assembly	(12)
(295T、295C、295GA、295GJ、295D、295C、295QB)	Camshaft Assembly	(14)
(295T、295GA、295D、295C、295QB)	Cylinder Head Assembly—— I	(16)
(295G、295GJ)	Cylinder Head Assembly—— II	(19)
(295T、295GA、295D、295C)	Decompression Mechanism—— I	(22)
(295G、295GJ、295QB)	Decompression Mechanism—— II	(25)
(295T、295G、295GA、295GJ、295D、295C、295QB)	Piston and Connecting Rod Assembly	(28)
(295T、295G、295GA、295D、295C、295QB)	Crankshaft and Flywheel Assembly—— I	(30)
(295GJ)	Crankshaft and Flywheel Assembly—— II	(32)
(295T、295G、295GA、295GJ、295D、295C、295QB)	Fan and Water Pump Assembly	(34)
(295T)	Air Intake System—— I	(37)
(295G、295GA、295GJ、295D、295C)	Air Intake System—— II	(39)
(295QB)	Air Intake System—— III	(41)
(295T、295QB)	Exhaust System—— I	43
(295G、295GA、295GJ、295D)	Exhaust System—— II	(45)
(295C)	Exhaust System—— III	(47)
(295T、295G、295GA、295GJ、295D、295C、295QB)	Engine Oil Pump Assembly	(49)
(295T、295G、295GA、295GJ、295D、295C、295QB)	Engine Oil Filter Assembly	(51)

(295T、295G、295GA、295GJ、295D)	Fuel System—— I	(53)
(295C、295QB)	Fuel System—— II	(55)
总成 (295T、295G、295GA、295GJ、295D、295C、295QB)	Fuel Filter Assembly	57)
(295C、295QB)	Fuel Feed Pump Assembly	(59)
(295T、295G、295GA、295GJ、295D、295C、295QB)	Injection Pump Assembly	(62)
(295T、295G、295GA、295GJ、295D、295C、295QB)	Governor Assembly	(66)
(295T、295G、295GA、295GJ、295D、295C、295QB)	Injection Nozzle Assembly	(70)
(295T、295GA、295D)	Radiator Assembly	(72)
(295C)	Sea Water Cooling Assembly	(74)
(295G、295GA、295GJ、295D、295C)	Throttle Controlling Assembly	(76)
(295G、295GA)	Clutch	(78)
(295G、295GA)	Clutch Control Lever Assembly	(80)
(295G、295GA)	Belt Pulley Power. Output	(82)
(295G、295GA、295GJ、295D)	Fuel Tank Assembly	(85)
(295GJ)	Tensioner Sub - assembly	(87)
成 (295T、295G、295GA、295D、295C、295QB)	Electric Instrument Assembly	(89)
(295G、295GA、295GJ、295D)	Front & Rear Bracket	(93)

(295T, 295GA, 295D, 295QB)

Cylinder Block Assembly — I



(295T、295GA、295D、295QB) Cylinder Block Assembly—I

Ser No	Parts No	Name of Parts	Qty			
			295T	295GA	295D	295QB
1	GB5783--86	Hex. bolt M8×20	10	10	10	10
2	GB93--87	Lock washer 8	41	41	41	41
3	GB97.1--85	Washer 8	4	4	4	4
4	295--01020	Generator regulating bracket	1	1	1	1
5	GB5782--86	Hex. bolt M8×40	1	1	1	1
6	GB5782--86	Hex. bolt M8×35	2	2	2	2
7	GB5782--86	Hex. bolt M8×75	7	7	7	7
8	GB5782--86	Hex. bolt M8×42	4	4	4	4
9	GB5783--86	Hex. bolt M8×22	5	5	5	5
10	295T--01043	Air pump fuel return tube Hex. bolt	1			
11	295T--01044	Air pump fuel return tube union washer	2			
12	295T--01046	Pipe union(A)	1			
13	295T--01045	Air pump bracket seat	1			
13	295--01047	Cover		1	1	1
14	295--01009	Cover gasket	1	1	1	1
15	HG4--692--67	Oil seal PG 55×85×12	1	1	1	1
16	295T--01010	Timing gear case cover	1	1	1	1
17	GB5783--86	Hex. bolt M8×16	2	2	2	2
18	295--01028	Idler gear stop ring	1	1	1	1
19	295--01202	Bushing	2	2	2	2
20	295--01201	Idler gear	1	1	1	1
21	295--01027	Idler shaft	1	1	1	1

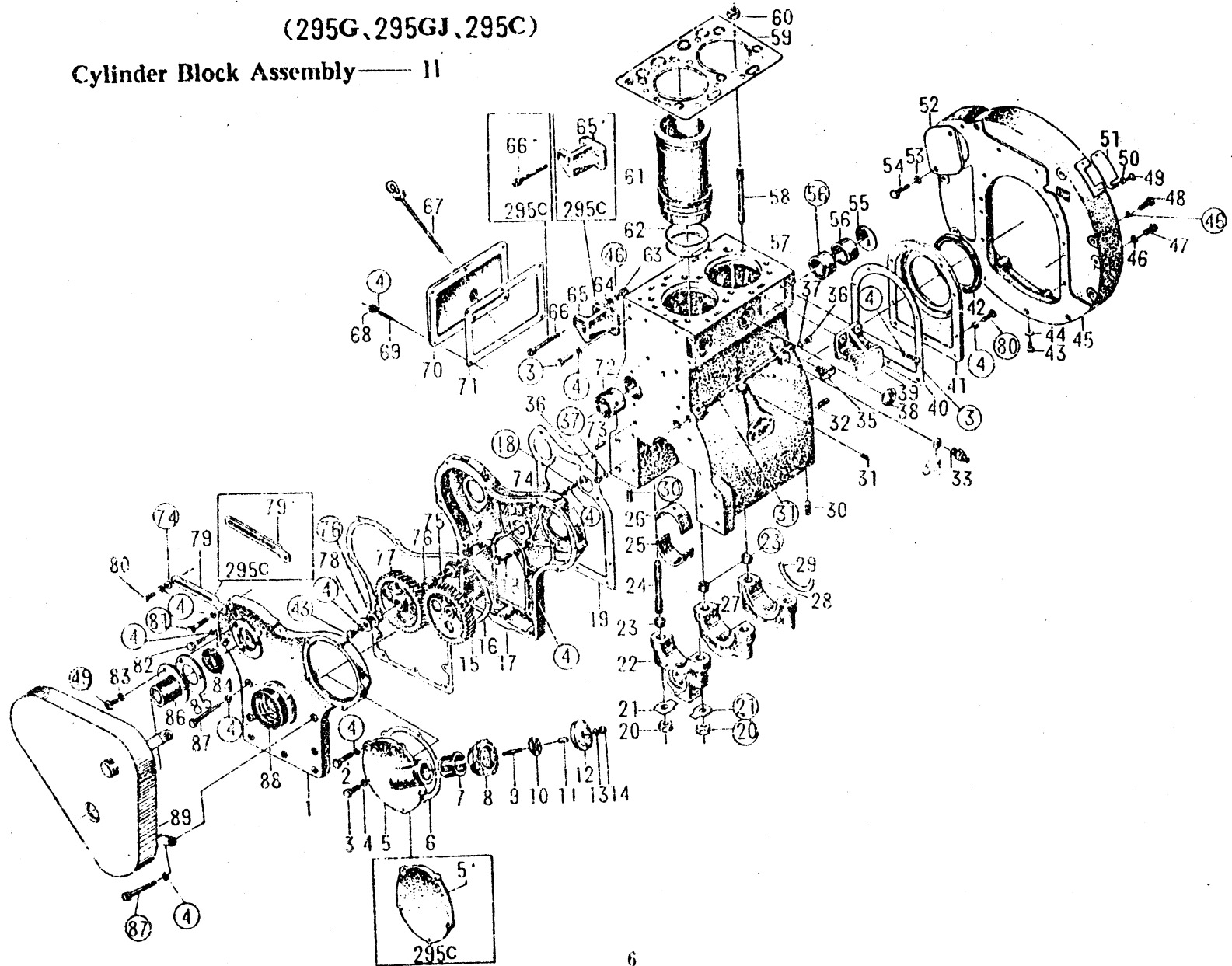
Ser No	Parts No	Name of Parts	Qty			
			295T	295GA	295D	295QB
22	295 01011	Injection pump gear	1	1	1	1
23	295--01001	Timing gear case cover gasket	1	1	1	1
24	295 - 01008	Timing gear case	1	1	1	1
25	GB5783--86	Hex. bolt M8×25	5	5	5	5
26	295 --01037	Timing gear case gasket	1	1	1	1
27	295 01104	Main oil circuit threaded plug	2	2	2	2
28	GB1235--76	O-ring 15×2.4	2	2	2	2
29	GB119--86	Pin A8×22	2	2	2	2
30	295 --01103	Camshaft bushing I	1	1	1	1
31	295 -01004	Main bearing (Upper)	3	3	3	3
32	295--01005	Main bearing (Lower)	3	3	3	3
33	295 --01108	Main bearing cap stud	6	6	6	6
34	295 01110	Main bearing positioning sleeve	6	6	6	6
35	295 --01106	Main bearing cap I	1	1	1	1
36	GB854--88	Tongue lock washer 16	6	6	6	6
37	295 01107	Main bearing cap nut	6	6	6	6
38	295 01109	Main bearing cap II	1	1	1	1
39	295 --01111	Main bearing cap III	1	1	1	1
40	295 --01024	Thrust ring	2	2	2	2
41	295--01120	Engine oil circuit threaded plug	3	3	3	3
42	295--01101	Cylinder block	1	1	1	1
43	GB119--86	Pin A12×24	2	2	2	2
44	GB119 86	Pin A12×30	2	2	2	2

Ser No	Parts No	Name of Parts	Qty			
			295T	295GA	295D	295QB
45	295--01019	Engine oil pressure gauge adaptor gasket	2	1	1	1
46	295--01018A	Engine oil pressure gauge adaptor	1			
46	295--01018	Engine oil pressure gauge adaptor		1	1	
46	295--01018B	Engine oil pressure gauge adaptor				1
47	295--01600	Water drain cock ZM14	1	1	1	1
48	295--01115	Water channel stopper	2	2	2	2
49	295--01029	Fuel filter braket	1	1	1	1
50	295--01038	Crankshaft rear oil seal cover gasket	1	1	1	1
51	295--01030	Crankshaft rear oil seal cover	1	1	1	1
52	HG4--692--67	Oil seal PG 100×125×12	1	1	1	1
53	295--01042	Flat washer	1	1	1	1
54	295--01016	Flywheel housing	1	1	1	1
55	GB93--87	Lock washer 10	9	9	9	9
56	GB5783--86	Hex. bolt M10×25	1	1	1	1
57	GB5783--86	Hex. bolt M10×30	7	7	7	7
58	GB67--85	Round head screw M6×12	2	2	2	2
59	GB97.1--85	Washer 6	2	2	2	2
60	295--01031	Inspecting window cover	1	1	1	1
61	GB93--87	Lock washer 12	2	2	2	2
62	GB5783--86	Hex. bolt M12×30	2	2	2	2
63	295--01114	Camshaft hole stopper	1	1	1	1
64	295--01113	Camshaft bushing II & III	2	2	2	2
65	295--01013	Cylinder head stud	10	10	10	10

Ser No	Parts No	Name of Parts	Qty			
			295T	295GA	295D	295QB
66	295-01015	Cylinder head gasket	1	1	1	1
67	295-01012	Cylinder head nut	10	10	10	10
68	295-01014	Cylinder liner	2	2	2	2
69	295-01003	Water seal ring	4	4	4	4
70	GB6170-86	Nut M10	1	1	1	1
71	GB97.1-85	Flat washer 10	1	1	1	1
72	295-01017A	Generator bracket seat	1	1	1	1
73	295-01039A	Stud	1	1	1	1
74	295-01022	Side cover gasket	1	1	1	1
75	295-01023	Side cover	1	1	1	1
76	295-01400	Engine oil dipstick	1	1	1	1
77	GB6170-86	Nut M8	6	6	6	6
78	GB898-88	Stud AM8×18	6	6	6	6

(295G, 295GJ, 295C)

Cylinder Block Assembly — 11



(295G, 295GJ, 295C)

Cylinder Block Assembly — II

Ser No.	Parts No	Name of Parts	Qty		
			295G	295GJ	295C
1	295G—01010	Timing gear case cover	1	1	1
2	GB5782—86	Hex. bolt M8×42	4	4	4
3	GB5783—86	Hex. bolt M8×22	5	5	5
4	GB93—87	Lock washer 8	41	41	41
5	295G 01505	Cover of oil filler bend	1	1	
5	295—01047	Cover			1
6	295—01009	Cover gasket	1	1	1
7	295—03102A	Engine oil filter	1	1	
8	295—03601	Breather body	1	1	
9	GB898—88	Stud M8×30	1	1	
10	295—03602	Breather piece	1	1	
11	295—03604	Sleeve	1	1	
12	295—03603	Breather cap	1	1	
13	GB848—85	Flat washer 8	1	1	
14	GB923—88	Nut M8	1	1	
15	295—01011	Injection pump gear	1	1	1
16	295—01001	Timing gear case cover gasket	1	1	1
17	295—01008	Timing gear case	1	1	1
18	GB5783—86	Hex. bolt M8×25	5	5	5
19	295 01037	Timing gear case gasket	1	1	1
20	295—01107	Main bearing cap nut	6	6	6

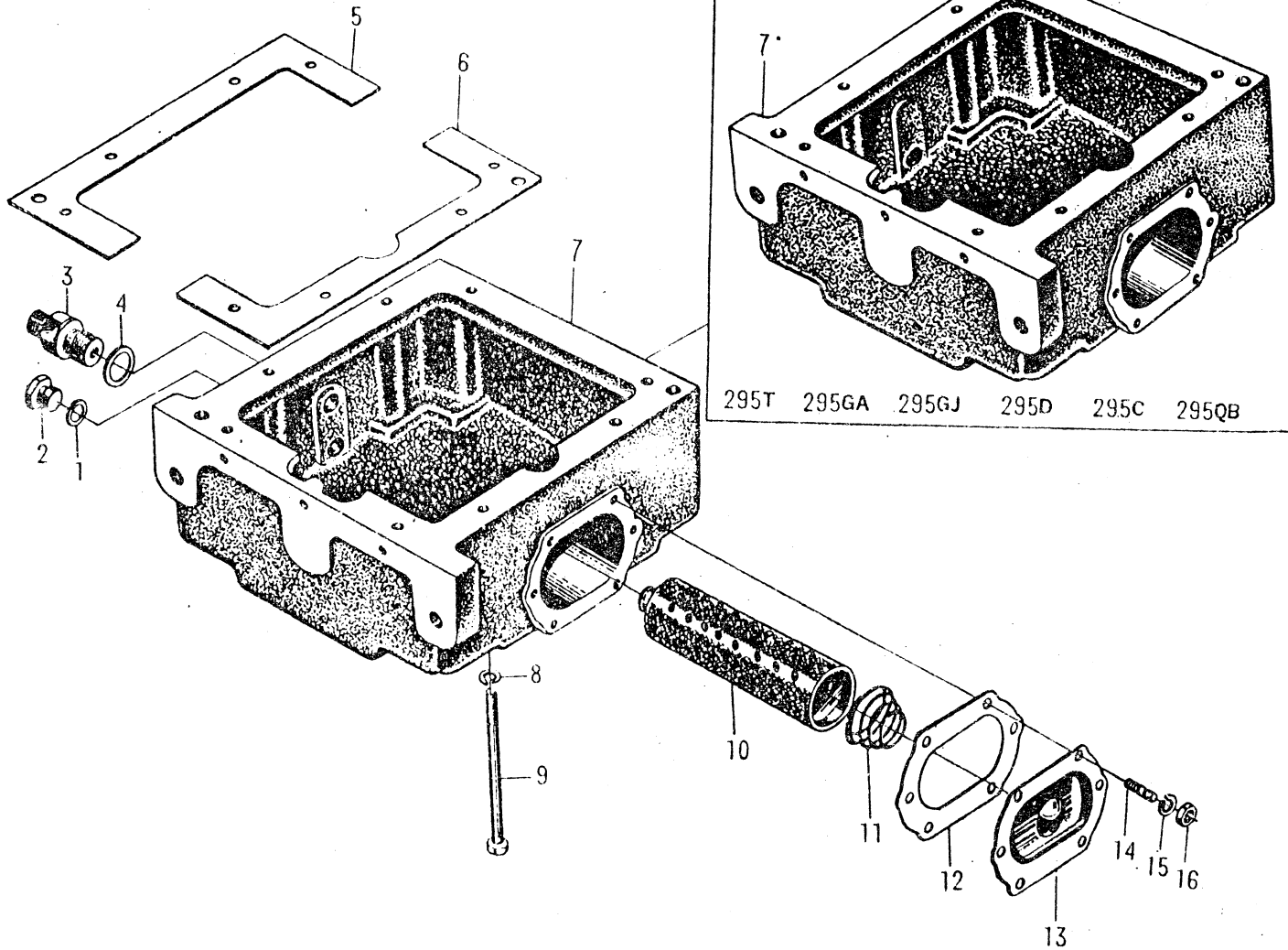
Ser No	Parts No	Name of Parts	Qty		
			295G	295GJ	295C
21	GB854--88	Tongue lock washer 16	6	6	6
22	295-- 01106	Main bearing cap I	1	1	1
23	295-- 01110	Main bearing positioning sleeve	6	6	6
24	295-- 01108	Main bearing cap stud	6	6	6
25	295-- 01005	Main bearing (Lower)	3	3	3
26	295-- 01004	Main bearing (Upper)	3	3	3
27	295-- 01109	Main bearing cap II	1	1	1
28	295--01111	Main bearing cap III	1	1	1
29	295-- 01024	Thrust ring	2	2	2
30	GB119--86	Pin A12×24	2	2	2
31	295-- 01120	Engine oil circuit thread plug	3	3	3
32	GB119--86	Pin A12×30	2	2	2
33	295-- 01018	Engine oil pressure gauge adaptor	1	1	1
34	295-- 01019	Engine oil pressure gauge adaptor washer	1	1	1
35	295-- 01600	Water drain cock ZM14	1	1	1
36	295-- 01104	Main oil circuit threaded plug	2	2	2
37	GB1235--76	O-- ring 15×2.4	2	2	2
38	295-- 01115	Water channel stopper	2	2	2
39	295-- 01029	Fuel filter bracket seat	1	1	1
40	295-- 01038	Crankshaft rear oil seal gasket	1	1	1
41	295-- 01030	Crankshaft rear oil seal cover	1	1	1
42	HG4--692--67	Oil seal PG 100×125×12	1	1	1
43	GB5783--86	Hex. bolt M8×16	2	2	2

Ser No	Parts No	Name of Parts	Qty		
			295G	295GJ	295C
44	295--01042	Flat washer	1	1	1
45	295--01016	Flywheel housing	1	1	1
46	GB93--87	Lock washer 10	9	9	9
47	GB5783--86	Hex. bolt M10×25	1	1	1
48	GB5723--86	Hex. bolt M10×30	7	7	7
49	GB67--85	Button head cap screw M6×12	5	5	5
50	GB97.1--85	Washer 5	2	2	2
51	295--01031	Sight window cover	1	1	1
52	295GJ--01044	Motor hole cap		1	
53	GB93--87	Lock washer 12	2	2	2
54	GB5783--86	Hex. bolt M12×30	2	2	2
55	295--01114	Camshaft hole plate	1	1	1
56	295--01113	Camshaft bushing II & III	2	2	2
57	295--01101	Cylinder block	1	1	1
58	295--01013	Cylinder head stud	10	10	10
59	295--01015	Cylinder head gasket	1	1	1
60	295--01012	Cylinder head nut	10	10	10
61	295--01014	Cylinder liner	2	2	2
62	295--01003	Water seal ring	4	4	4
63	GB6170--86	Nut M10	1	1	1
64	GB97.1--85	Flat washer 10	1	1	1
65	295--01017A	Generator bracket seat	1	1	
65	295C--01017	Generator bracket seat			1

Ser No	Parts No	Name of Parts	Qty		
			295G	295GJ	295C
66	295--01039	Stud	1	1	
66*	295C--01039	Stud			1
67	295--01400	Engine oil dipstick	1	1	1
68	GB6170--86	Nut M8	6	6	6
69	GB898--88	Stud AM 8×18	6	6	6
70	295--01023	Side cover	1	1	1
71	295--01022	Side cover gasket	1	1	1
72	295--01103	Camshaft bushing 1	1	1	1
73	GB119--86	Pin A8×22	2	2	2
74	GB97.1--85	Flat washer 8	4	4	4
75	295--01027	Idler shaft	1	1	1
76	295--01202	Bushing	2	2	2
77	295--01201	Idler gear	1	1	1
78	295--01028	Idler gear stop ring	1	1	1
79	295--01020	Generator regulating bracket	1	1	
79*	295C--01020	Generator regulating bracket			1
80	GB5783--86	Hex. bolt M8×20	10	10	10
81	GB5782--86	Hex. bolt M8×10	1	1	1
82	GB5782--86	Hex. bolt M8×35	2	2	2
83	GB93--87	Lock washer 6	3	3	3
84	HG4--692--67	Oil seal PG 30×45×10	1	1	1
85	295G--01035	Camshaft cap gasket	1	1	1
86	295G--01700	Starting claw protective sub-assembly	1	1	1
87	GB5782--86	Hex. bolt M8×75	7	7	7
88	HG4--692--67	Oil seal PG 55×85×12	1	1	1
89	295G--01800A	Belt cover sub-assembly	1	1	1

(295T, 295G, 295GA, 295GJ, 295D, 295C, 295QB)

Oil Sump Assembly



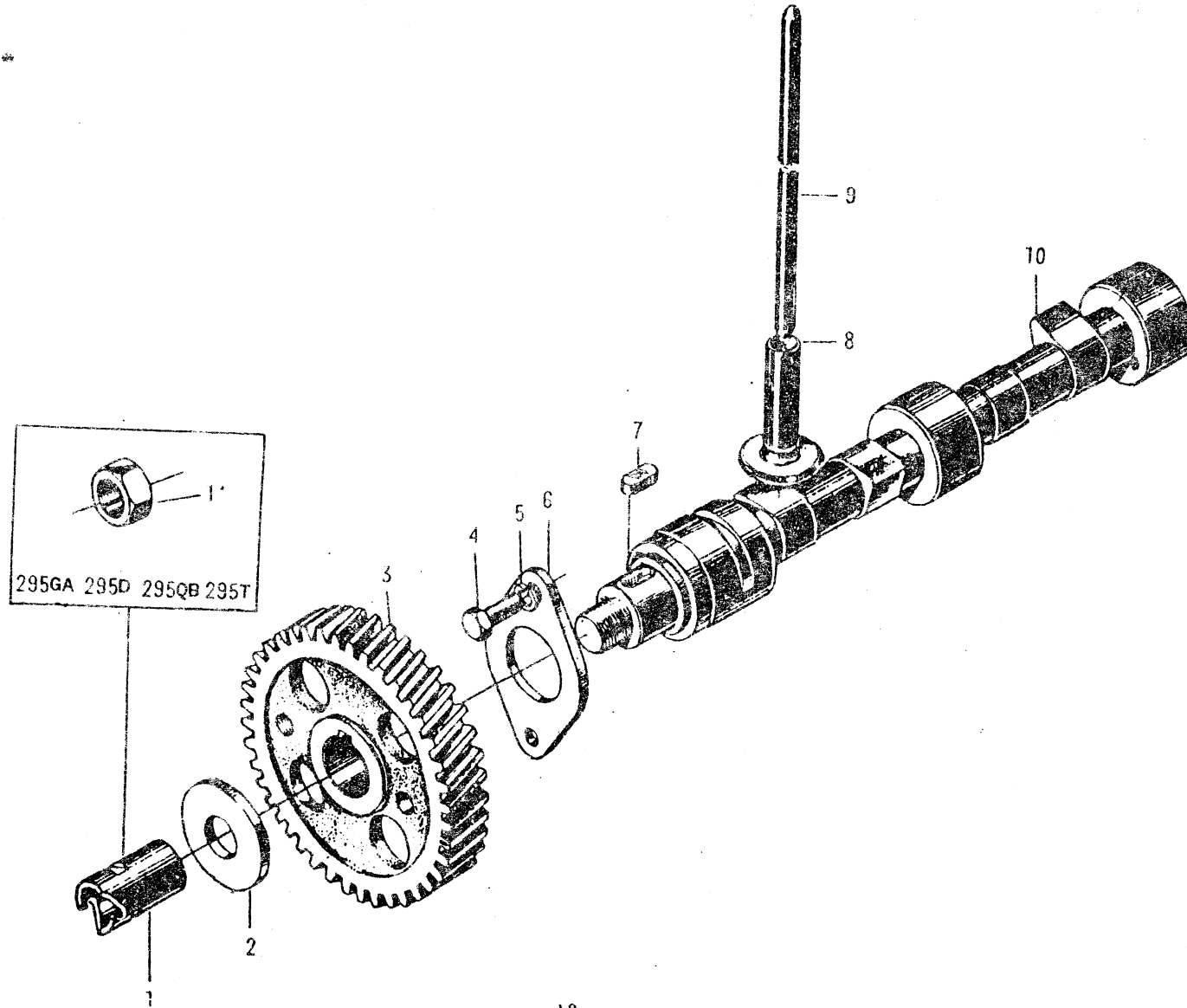
(295T, 295G, 295GA, 295GJ, 295D, 295C, 295QB)

Oil Sump Assembly

Ser No	Parts No	Name of Parts	Qty						
			295T	295G	295GA	295GJ	295D	295C	295QB
1	295--01036	Drain plug washer	1	1	1	1	1	1	1
2	295--01025	Drain plug	1	1	1	1	1	1	1
3	295--03306	Temperature gauge adapter		1					
4	295--03307	Flat washer		1					
5	295--01118A	Oil sump gasket I	1	1	1	1	1	1	1
6	295--01119	Oil sump gasket II	1	1	1	1	1	1	1
7	295--01105C	Oil sump		1					
7*	295--01105D	Oil sump	1		1	1	1	1	1
8	GB93--87	Lock washer 10	8	8	8	8	8	8	8
9	GB5782--86	Hex. bolt M10×125	8	8	8	8	8	8	8
10	295--09100	Coarse filter	1	1	1	1	1	1	1
11	295--09001	Taper spring	1	1	1	1	1	1	1
12	295--01007	Oil sump side plate gasket	1	1	1	1	1	1	1
13	295--01041	Oil sump side plate	1	1	1	1	1	1	1
14	GB898--88	Stud AM8×14	6	6	6	6	6	6	6
15	GB93--87	Lock washer 8	6	6	6	6	6	6	6
16	GB6170--86	Nut M 8	6	6	6	6	6	6	6

(295T, 295G, 295GA, 295GJ, 295D, 295C, 295QB)

Camshaft Assembly

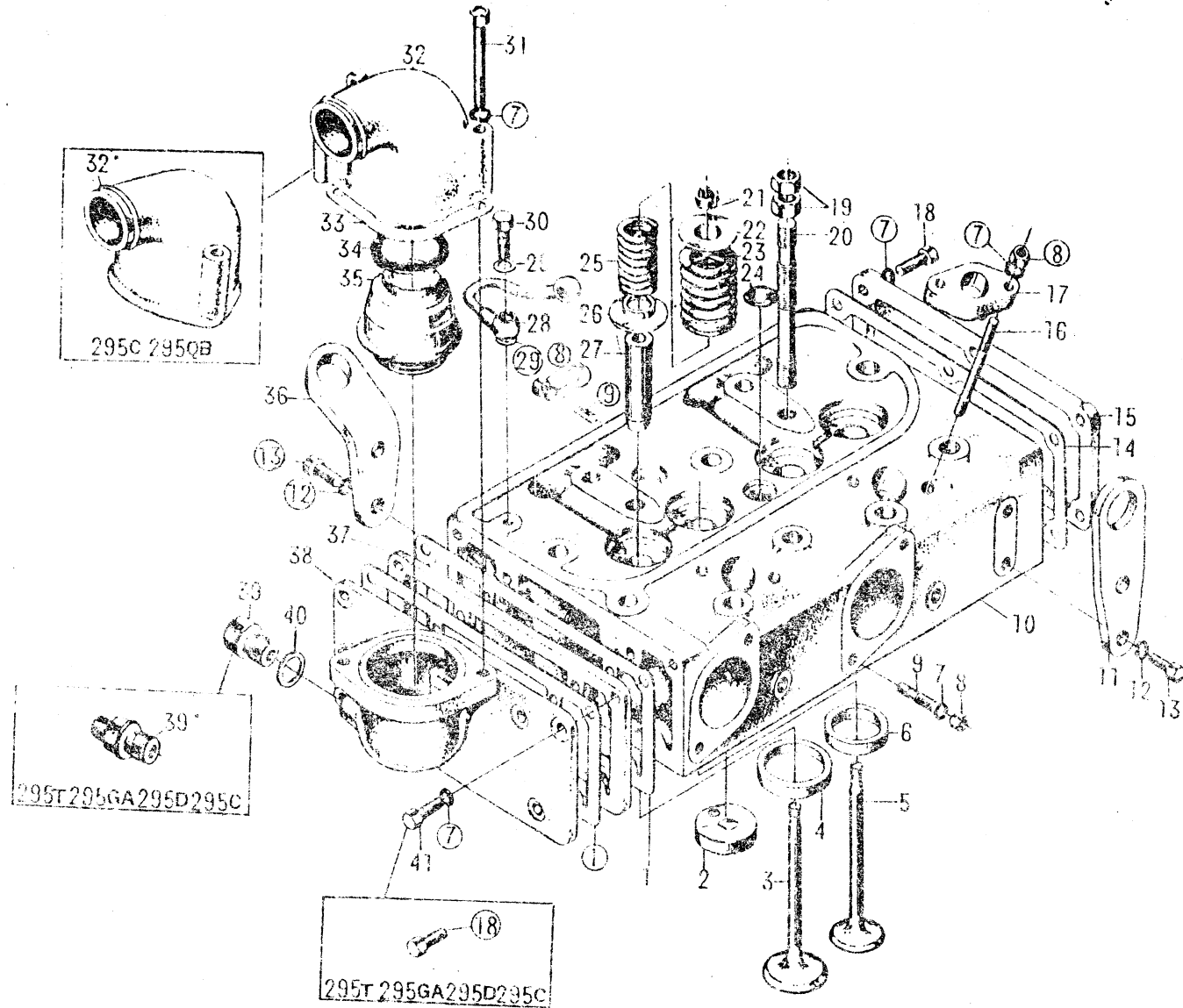


(295T、295G、295GA、295GJ、295D、295C、295QB) Camshaft Assembly

Ser No	Parts No	Name of Parts	Qty							
			295T	295G	295GA	295GJ	295D	295C	295QB	
1	295G-02002	Starting claw		1		1			1	
1	GB6171-86	Nut M18×1.5	1		1			1		1
2	295-02003A	Washer	1	1	1	1	1	1	1	1
3	295-02006	Camshaft timing gear	1	1	1	1	1	1	1	1
4	GB5783-86	Hex. bolt M8×30	2	2	2	2	2	2	2	2
5	GB93-87	Lock washer 8	2	2	2	2	2	2	2	2
6	295-02007	Thrust plate	1	1	1	1	1	1	1	1
7	GB1096-79	Flat key 8×18	1	1	1	1	1	1	1	1
8	295-02004	Valve tappet	4	4	4	4	4	4	4	4
9	295-02005	Valve push rod	4	4	4	4	4	4	4	4
10	295-02001A	Camshaft	1	1	1	1	1	1	1	1

(295T, 295GA, 295D, 295C, 295QB)

Cylinder Head Assembly 1



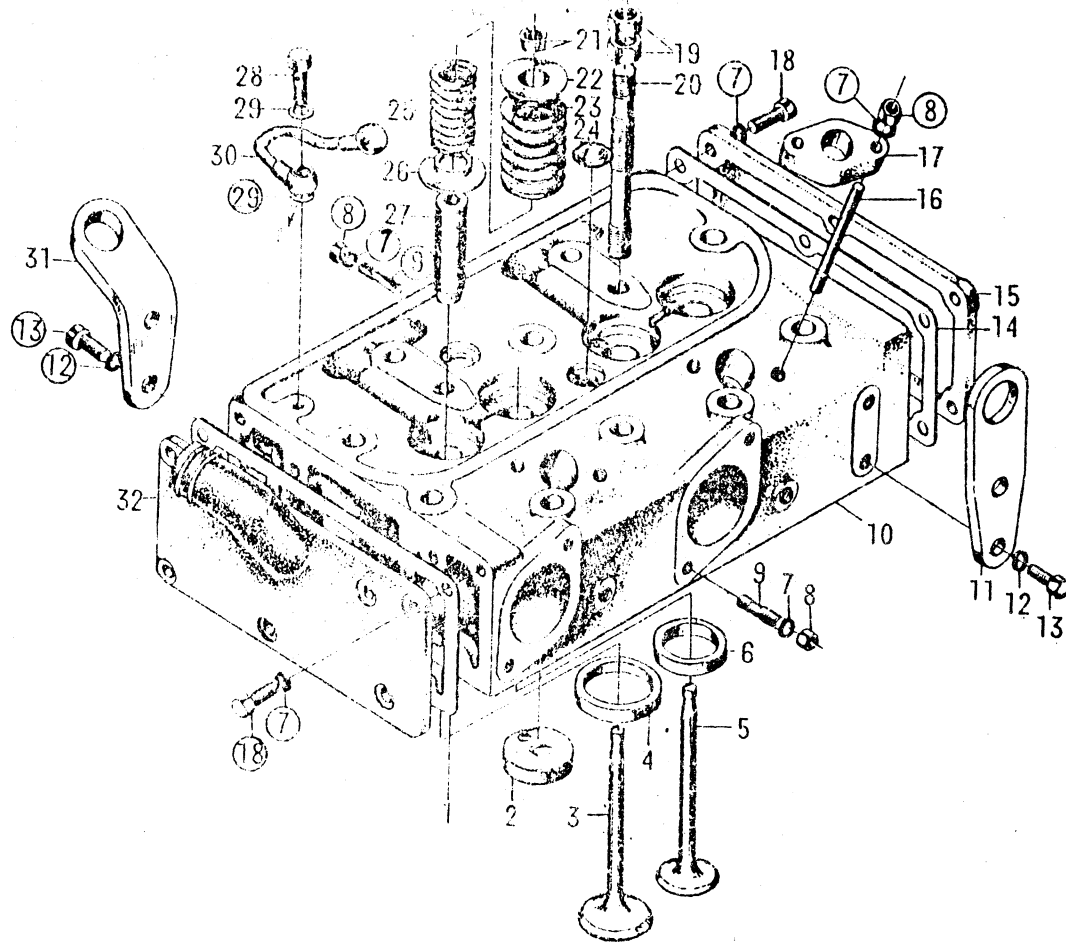
(295T, 295GA, 295D, 295C, 295QB)

Cylinder Head Assembly—I

Ser No	Parts No	Name of Parts	Qty				
			295T	295GA	295D	295C	295QB
1	295--03018	Front cover plate gasket	1	1	1	1	2
2	295--03202	Tubulence chamber insert	2	2	2	2	2
3	295--03001	Intake valve	2	2	2	2	2
4	295--03206	Intake valve seat	2	2	2	2	2
5	295--03002	Exhaust valve	2	2	2	2	2
6	295--03205	Exhaust valve seat	2	2	2	2	2
7	GB93--87	Lock washer 8	27	27	27	27	27
8	GB6170--86	Nut M8	12	12	12	12	12
9	GB898--88	Stud AM8×22	8	8	8	8	8
10	295--03201A	Cylinder head	1	1	1	1	1
11	295--03013	Sling hook	1	1	1	1	1
12	GB93--87	Lock washer 10	4	4	4	4	4
13	GB5783--86	Hex. bolt M10×22	4	4	4	4	4
14	295--03010	Rear cover gasket	1	1	1	1	1
15	295--03019	Rear cover plate	1	1	1	1	1
16	GB898--88	Stud M8×60	4	4	4	4	4
17	295--03011A	Injection nozzle press plate	2	2	2	2	2
18	GB5783--86	Hex. bolt M8×20	13	13	13	13	6
19	GB6170--86	Nut M12	4	4	4	4	4
20	295--03020A	Fixing bolt	2	2	2	2	2
21	295--03007	Valve lock clip	8	8	8	8	8
22	295--03004	Valve upper spring seat	4	4	4	4	4

Ser No	Parts No	Name of Parts	Qty				
			295T	295GA	295D	295C	295QB
23	295-- 03005	Valve outer spring	4	4	4	4	4
24	295- 03204	Stopper	2	2	2	2	2
25	295 03006	Valve inner spring	4	4	4	4	4
26	295 03009A	Valve lower spring seat	4	4	4	4	4
27	295 03203	Valve guide	4	4	4	4	4
28	295--03500--1	Rocker arm shaft oil inlet weldment	1	1	1	1	1
29	295-03014	Flat washer	2	2	2	2	2
30	295-03021	Tubular screw	1	1	1	1	1
31	GB5782-86	Hex. bolt M8×60	2	2	2	2	2
32	295-03305B	Thermostat cover	1	1	1		
32	295C-03305	Thermostat cover				1	1
33	295-03303	Thermostat cover gasket	1	1	1	1	1
34	295-03304	Water seal ring	1	1	1	1	1
35	295--03302	Type 145 waxy thermostat	1	1	1	1	1
36	295--03012	Bend sling hook	1	1	1	1	1
37	295QB--03017	Front cover plate gasket					1
38	295-03301C	Front cover plate	1	1	1	1	1
39	295QB--03306	Temperature gauge adaptor					1
39	295--03306	Temperature gauge adaptor	1	1	1	1	
40	295-03307	Washer	1	1	1	1	
41	GB5783-86	Hex. bolt M8×35					7

(295G, 295GJ) Cylinder Head Assembly — II



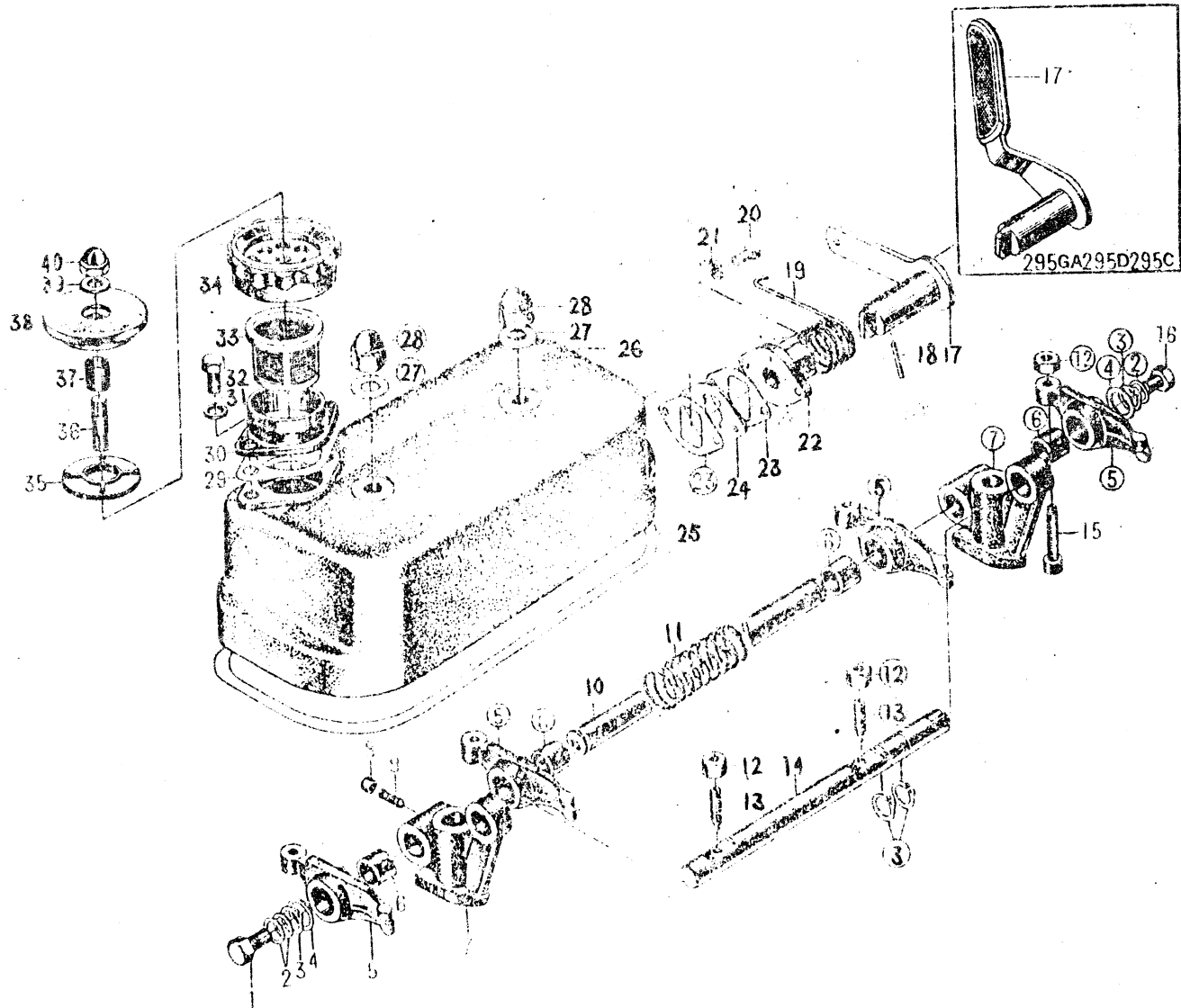
(295G、295GJ)

Cylinder Head Assembly— II

Ser No	Parts No	Name of Parts	Qty	
			295G	295GJ
1	295--03018	Front cover plate gasket	1	1
2	295 -03202	Turbulence chamber insert	2	2
3	295 - 03001	Intake valve	2	2
4	295 - 03206	Intake valve seat	2	2
5	295--03002	Exhaust valve	2	2
6	295 - 03205	Exhaust valve seat	2	2
7	GB93 - 87	Lock washer 8	25	25
8	GB6170 - 86	Nut M8	12	12
9	GB898--88	Stud AM8×22	8	8
10	295 -03201A	Cylinder head	1	1
11	295--03013	Sling hook	1	1
12	GB93--87	Lock washer 10	4	4
13	GB5783--86	Hex. bolt M10×22	4	4
14	295- 03010	Rear cover gasket	1	1
15	295--03019	Rear cover	1	1
16	GB898--88	Stud M8×60	4	4
17	295 -03011A	Injection nozzle Press plate	2	2
18	GB5783 - 86	Hex. bolt M8×20	13	13
19	GB6170 -86	Nut M12	4	4
20	295--03023A	Fixing bolt	2	2
21	295--03007	Valve lock clip	8	8
22	295--03004	Valve upper spring seat	4	4

Ser No	Parts No	Name of Parts	Qty	
			295G	295GJ
23	295--03005	Valve outer spring	4	4
24	295--03204	Stopper	2	2
25	295 -03006	Valve inner spring	4	4
26	295 --03009A	Valve lower spring seat	4	4
27	295--03203	Valve guid	4	4
28	295--03021	Tubular screw	1	1
29	295-03014	Flat washer	2	2
30	295--03500--1	Rocker arm shaft oil inlet weldment	1	1
31	295--03012	Bend sling hook	1	1
32	295G 03017	Front cover plate	1	1

(295T, 295GA, 295D, 295C) Decompression Mechanism 1



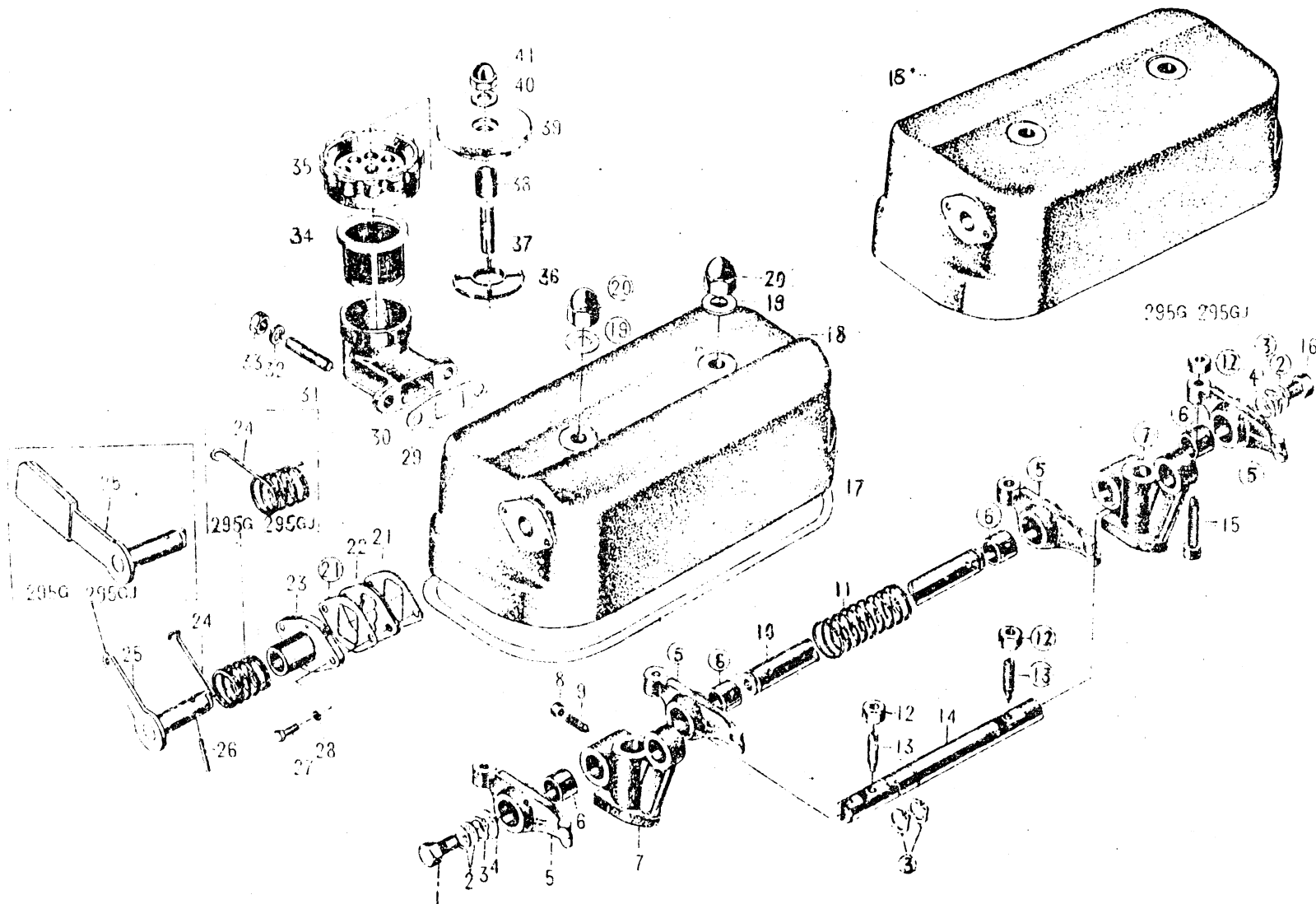
(295T, 295GA, 295D, 295C) Decompression Mechanism — I

Ser No	Parts No	Name of Parts	Qty			
			295T	295GA	295D	295C
1	295--03021	Tubular screw	1	1	1	1
2	295--03014	Flat washer	3	3	3	3
3	GB894.1--86	Stop ring 16	4	4	4	4
4	295--03407	Rocker arm shaft stop ring	2	2	2	2
5	295--03411	Valve rocker arm	4	4	4	4
6	295--03412	Valve rocker arm bushing	4	4	4	4
7	295--03401A	Rocker arm stand	2	2	2	2
8	GB6170--86	Nut M6	1	1	1	1
9	GB71--85	Screw M6×16	1	1	1	1
10	295--03404	Rocker arm shaft	1	1	1	1
11	295--03405	Rocker arm shaft spring	1	1	1	1
12	GB6171--86	Nut M8×1	6	6	6	6
13	295--03406	Decompression screw	2	2	2	2
14	295--03408	Decompression shaft	1	1	1	1
15	295--03403	Valve clearance adjusting screw	4	4	4	4
16	GB5785--86	Hex. bolt M10×1×12	1	1	1	1
17	295T--03110	Decompression lever weldment	1			
17	295D--03110	Decompression lever weldment		1	1	1
18	GB119--86	Pin A3×24	1	1	1	1
19	295--03107A	Decompression lever spring	1	1	1	1
20	GB5783--86	Hex. bolt M6×20	2	2	2	2
21	GB93--87	Lock washer 6	2	2	2	2

Ser No	Parts No	Name of Parts	Qty			
			295T	295GA	295D	295C
22	295--03106	Decompression shaft sleeve	1	1	1	1
23	295--03103	Gasket	2	2	2	2
24	295--03105	Decompression control plate	1	1	1	1
25	295--03003	Cylinder head hood gasket	1	1	1	1
26	295T--03101A	Cylinder head hood	1	1	1	1
27	GB97.2--85	Washer 12	2	2	2	2
28	GB923--88	Cap nut M12	2	2	2	2
29	295--03109	Oil filler tube gasket	1	1	1	1
30	295--03108	Oil filler tube	1	1	1	1
31	GB93--87	Lock washer 8	2	2	2	2
32	GB5783--86	Hex. bolt M8×20	2	2	2	2
33	295--03120A	Oil filter cup	1	1	1	1
34	295--03601	Breather body	1	1	1	1
35	295--03602	Breather piece	1	1	1	1
36	GB898--88	Stud M8×30	1	1	1	1
37	295--03604	Sleeve	1	1	1	1
38	295--03603	Breather cap	1	1	1	1
39	GB848--85	Flat washer 8	1	1	1	1
40	GB923--88	Cap nut M8	1	1	1	1

(295G, 295GJ, 295QB)

Decompression Mechanism — II



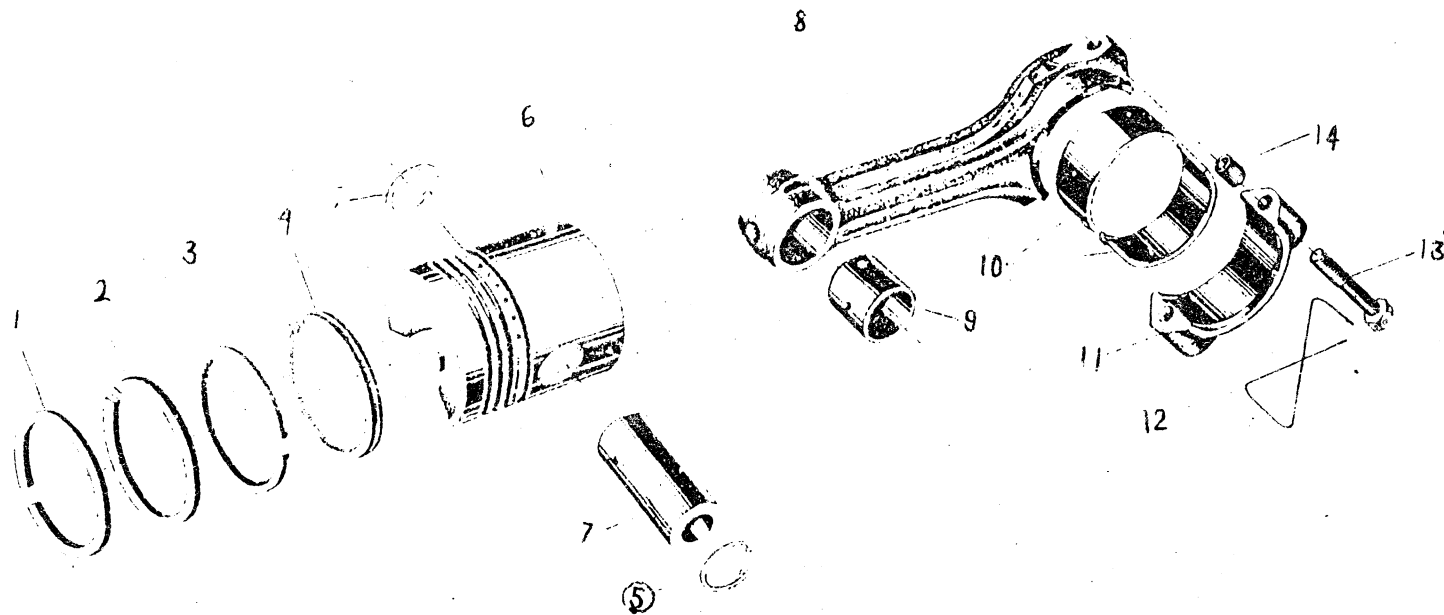
(295G、295GJ、295QB) Decompression Mechanism—— II

Ser No	Parts No	Name of Parts	Qty		
			295G	295GJ	295QB
1	295--03021	Tubular screw	1	1	1
2	295--03014	Washer	3	3	3
3	GB894.1--85	Stop ring 16	4	4	4
4	295--03407	Rocker arm shaft stop ring	2	2	2
5	295--03411	Valve rocker arm	4	4	4
6	295--03412	Valve rocker arm bushing	4	4	4
7	295--03401A	Rocker arm stand	2	2	2
8	GB6170--86	Nut M6	1	1	1
9	GB71--85	Screw M6×16	1	1	1
10	295--03404	Rocker arm shaft	1	1	1
11	295--03405	Rocker arm shaft spring	1	1	1
12	GB6171--86	Nut M8×1	6	6	6
13	295--03406	Decompression screw	2	2	2
14	295G--03408	Decompression shaft	1	1	1
15	295--03403	Valve clearance adjusting screw	4	4	4
16	GB5785--86	Hex. bolt M10×1×12	1	1	1
17	295--03003	Cylinder head hood gasket	1	1	1
18	295QB--03101	Cylinder head hood			1
18	295G--03101	Cylinder head hood	1	1	
19	GB97.2--85	Flat washer 12	2	2	2
20	GB923--88	Cap nut M12	2	2	2
21	295--03103	Gasket	2	2	2

Ser No	Parts No	Name of Parts	Qty		
			295G	295GJ	295QB
22	295--03105	Decompression control plate	1	1	1
23	295--03106	Decompression shaft sleeve	1	1	1
24	295T--03107A	Decompression lever spring			1
24	295G--03107	Decompression lever spring	1	1	
25	295QB-03110	Decompression lever weldment			1
25	295G-03110	Decompression lever weldment	1	1	
26	GB119--86	Pin A3×24	1	1	1
27	GB5783--86	Hex. bolt M6×20	2	2	2
28	GB93--87	Lock washer 6	2	2	2
29	295QB--03109	Oil filler tube gasket			1
30	295QB-03108	Oil filler tube			1
31	GB898--88	Stud AM8×20			2
32	GB93--87	Lock washer 8			2
33	GB6170--86	Nut M8			2
34	295--03120A	Oil filler cup			1
35	295-03601	Breather body			1
36	295--03602	Breather piece			1
37	GB898--88	Stud M8×30			1
38	295--03604	Sleeve			1
39	295--03603	Breather cap			1
40	GB848--85	Washer 8			1
41	GB923 88	Nut M8			1

(295T, 295G, 295GA, 295GJ, 295D, 295C, 295QB)

Piston and Connecting Rod Assembly

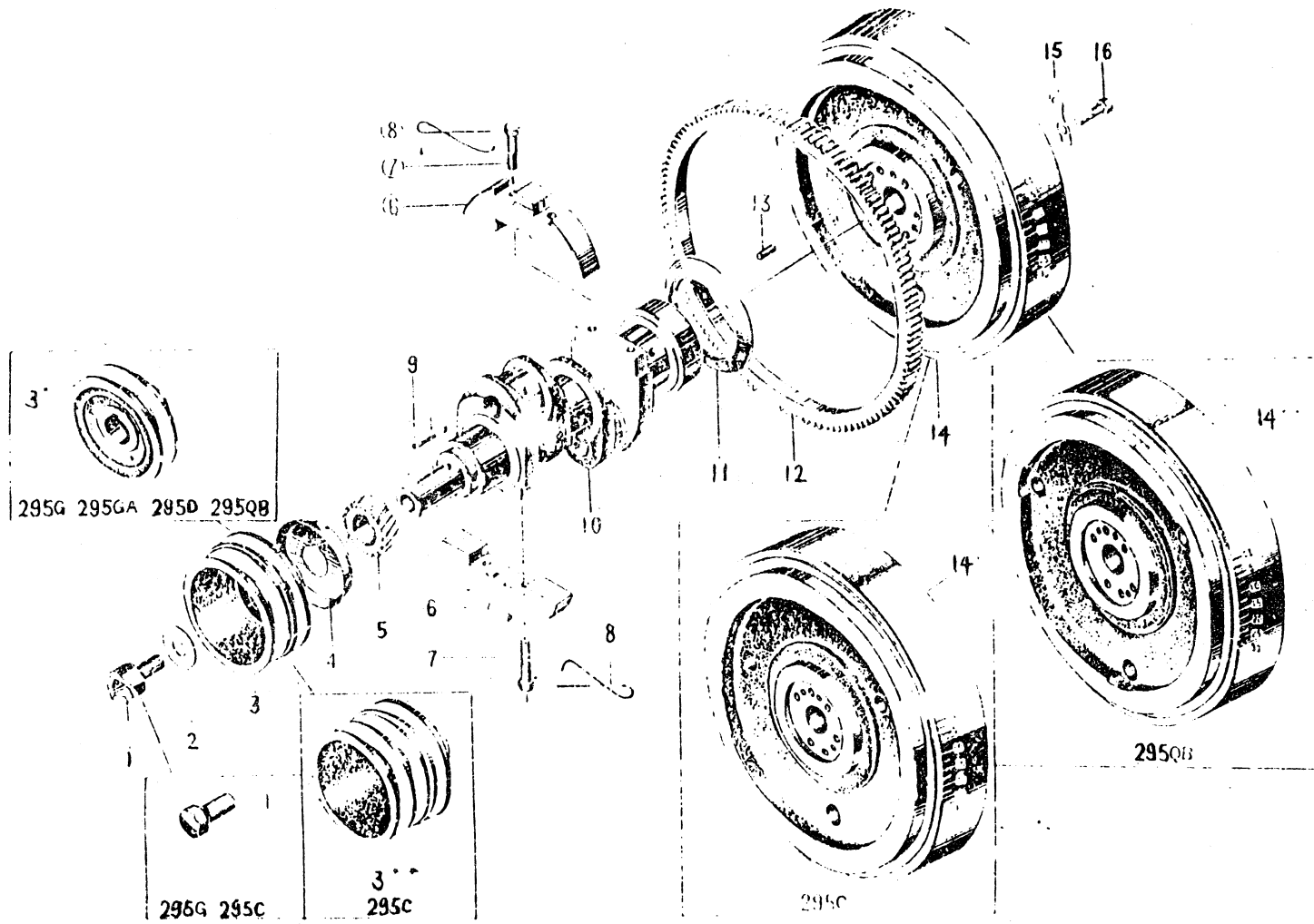


(295T, 295G, 295GA, 295GJ, 295D, 295C, 295QB) Piston and Connecting Rod Assembly

Ser No	Parts No	Name of Parts	Qty						
			295T	295G	295GA	295GJ	295D	295C	295QB
1	295 04001A	Barrel section ring	1	1	1	1	1	1	1
2	295 --04002A	Cone section ring	1	1	1	1	1	1	1
3	295--04003A	Twist ring	1	1	1	1	1	1	1
4	295 -- 04100	Elastic lock oil ring	1	1	1	1	1	1	1
5	GB893. 1--86	Stop ring 35	2	2	2	2	2	2	2
6	295--04004A	Piston	1	1	1	1	1	1	1
7	295 -- 04005A	Piston pin	1	1	1	1	1	1	1
8	295- 04202	Connecting rod	1	1	1	1	1	1	1
9	295-- 04201	Connecting rod bushing	1	1	1	1	1	1	1
10	295-- 04010	Connecting rod bearing	2	2	2	2	2	2	2
11	295-- 04203	Connecting rod bearing cap	1	1	1	1	1	1	1
12	295-- 04011	Lock wire	1	1	1	1	1	1	1
13	295--04204	Connecting rod bolt	2	2	2	2	2	2	2
14	295--04205	Connecting rod positioning sleeve	2	2	2	2	2	2	2

(295T, 295G, 295GA, 295D, 295C, 295QB)

Crankshaft and Flywheel Assembly----- I



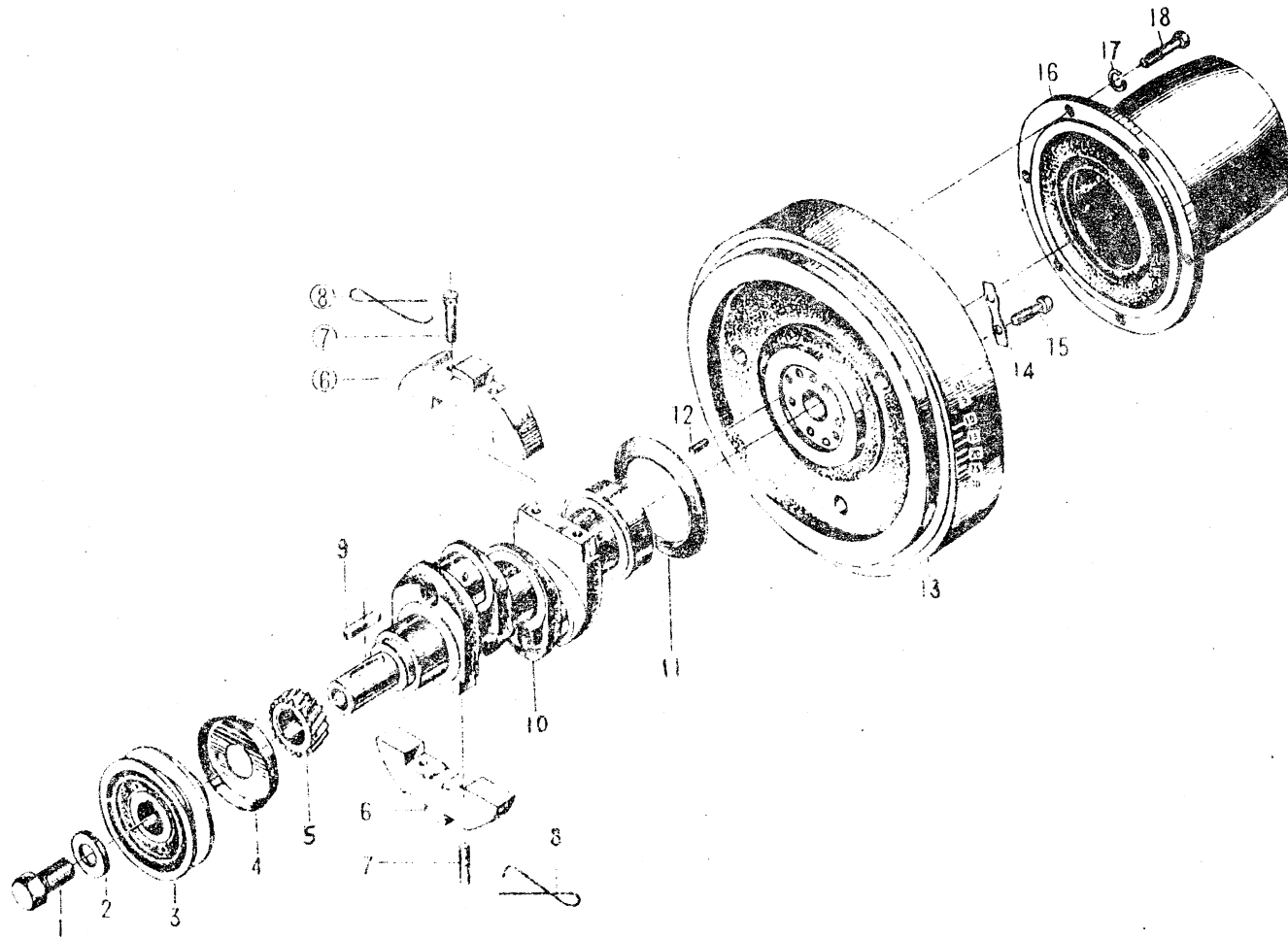
(295T, 295G, 295GA, 295D, 295C, 295QB). Crankshaft and Flywheel Assembly --- 1

Ser No	Parts No	Name of Parts	Qty					
			295T	295G	295GA	295D	295C	295QB
1	295T-05010B	Starting claw	1		1	1		1
1	295G-05010	Crankshaft bolt		1			1	
2	295-02003	Flat washer	1	1	1	1	1	1
3	295T-05009A	Belt pulley	1					
3	295-05009	Belt pulley		1	1	1		1
3	295C-05009	Belt pulley					1	
4	295-05008	Front oil seal	1	1	1	1	1	1
5	295-05006	Crankshaft timing gear	1	1	1	1	1	1
6	295-05005A	Balancing weight	2	2	2	2	2	2
7	295-04204	Connecting rod bolt	4	4	4	4	4	4
8	295-04011	Lock wire	2	2	2	2	2	2
9	GB1096-79	Flat key 10×55	1	1	1	1	1	1
10	295-05004A	Crankshaft	1	1	1	1	1	1
11	295-05003	Rear oil seal	1	1	1	1	1	1
12	295-05002A	Toothed ring	1	1	1	1	1	1
13	GB119-86	Pin A10×22	1	1	1	1	1	1
14	295T-05001A	Flywheel	1	1	1	1		
14	295C-05001	Flywheel					1	
14	295QB-05001	Flywheel						1
15	295-05011	Lock plate	3	3	3	3	3	3
16	295-05012	Flywheel fixing bolt	6	6	6	6	6	6

(295GJ)

Crankshaft and Flywheel Assembly

II

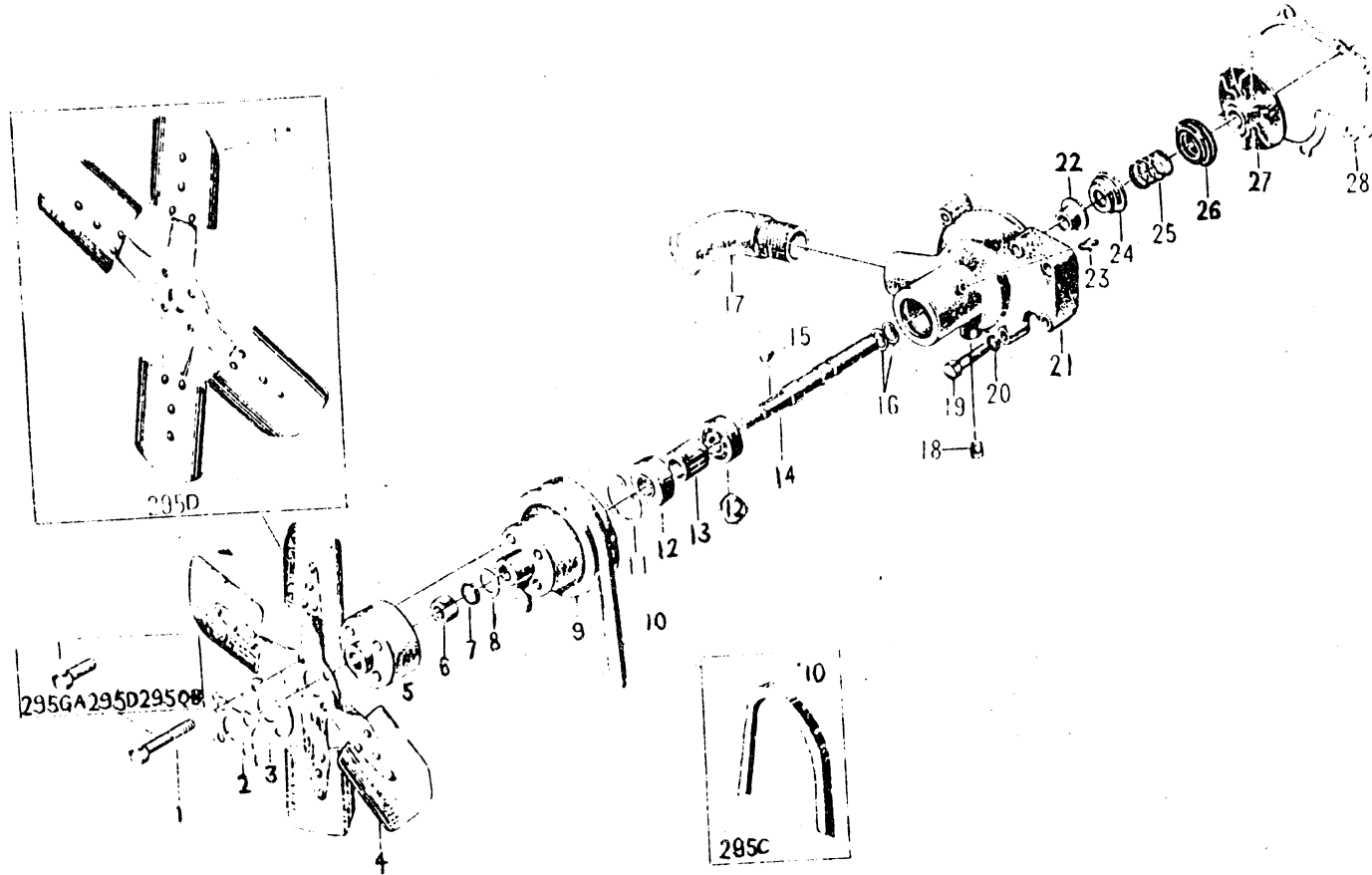


(295GJ) Crankshaft and Flywheel Assembly—— II

Ser No	Parts No	Name of Parts	Qty
			295GJ
1	295G--05010	Crankshaft bolt	1
2	295--02003	Flat washer	1
3	295--05009	Crankshaft pulley	1
4	295--05008	Front oil seal	1
5	295--05006	Crankshaft timing gear	1
6	295--05005A	Balancing weight	2
7	295--04204	Connecting rod bolt	4
8	295 04011	Lock wire	2
9	GB1096--79	Flat key 10×55	1
10	295--05004A	Crankshaft	1
11	295--05003	Rear oil seal	1
12	GB119--86	Pin 10×22	1
13	295T--05001A	Flywheel	1
14	295--05011	Lock plate	3
15	295--05012	Flywheel fixing bolt	6
16	295GJ--05020	Belt pulley	1
17	GB93--87	Lock washer 8	6
18	GB5783--86	Hex. bolt M8×25	6

(295T, 295G, 295GA, 295GJ, 295D, 295C, 295QB)

Fan and Water Pump Assembly



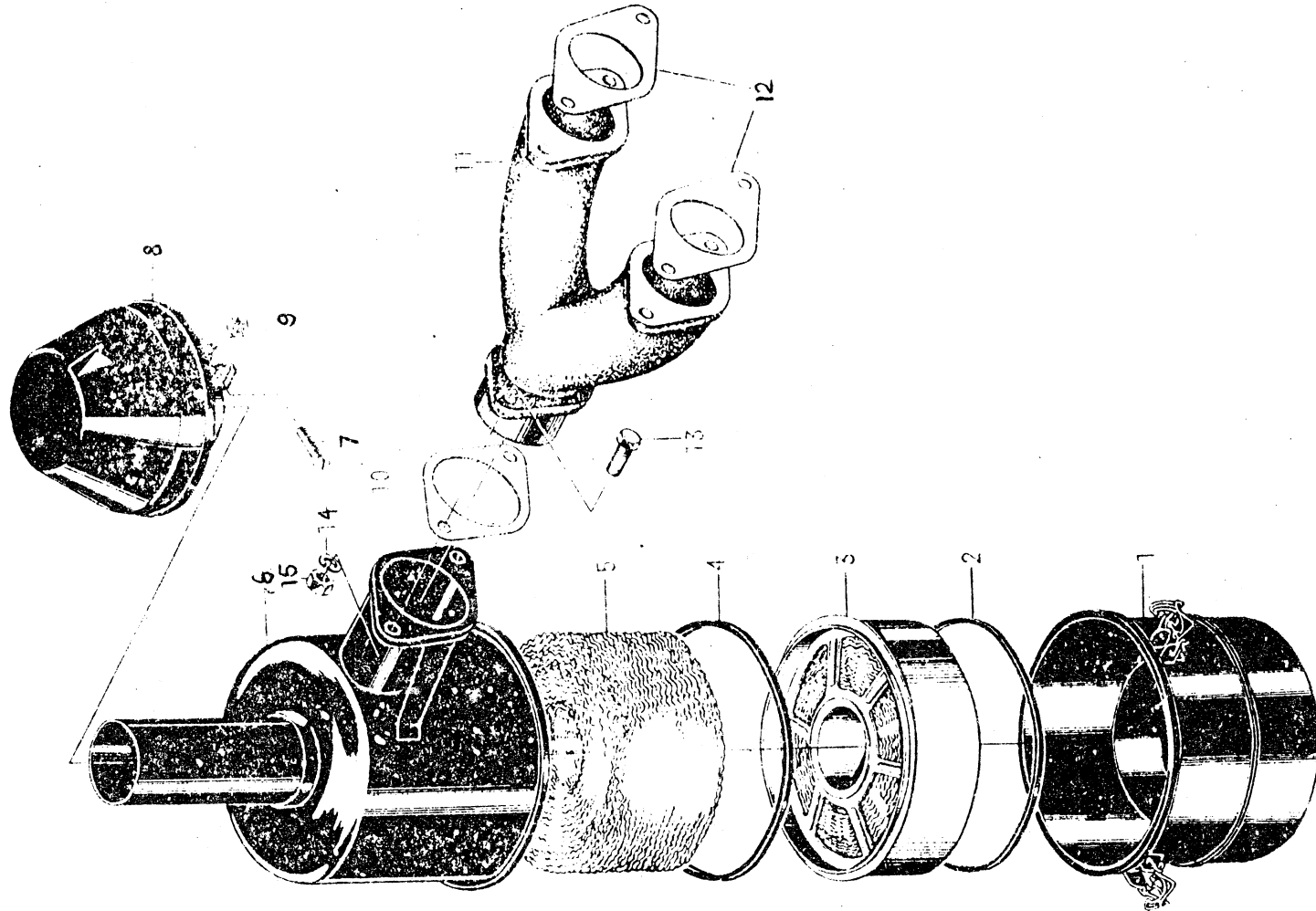
(295T、295G、295GA)、295GJ、295D、295C、295QB)

Fan and water pump Assembly

Ser No	Parts No	Name of Parts	Qty						
			295T	295G	295GA	295GJ	295D	295C	295QB
1	GB5782--86	Hex. bolt M8×50	4						
1*	GB5783--86	Hex. bolt M8×20			4		4		4
2	295T--06010	Lock plate	1		1		1		1
3	295T--06011	Fan washer	1		1		1		1
4	295T--06200	Fan	1		1				1
4*	295D--06200	Fan					1		
5	295T--06015	Fan and water pump spacer	1						
6	GB6170--86	Nut M12	1	1	1	1	1	1	1
7	GB93--87	Lock washer 12	1	1	1	1	1	1	1
8	GB97.2--85	Flat washer 12	1	1	1	1	1	1	1
9	295--06008	Water pump belt pulley	1	1	1	1	1	1	1
10		V--belt B--1041 (For generator JF01c)	1	1	1	1	1		1
		V--belt B--1067 (For generator ZJF200)	1	1	1	1	1		1
10*		V--belt B--1120						1	
11	GB893.1--86	Lock ring 40	1	1	1	1	1	1	1
12	GB278--82	Bearing 60203	2	2	2	2	2	2	2
13	295--06007	Sleeve	1	1	1	1	1	1	1
14	295--06009	Water pump shaft	1	1	1	1	1	1	1
15	GB1099--79	Key 5×19	1	1	1	1	1	1	1
16	GB894.1--86	Elastic lock ring 17	2	2	2	2	2	2	2

Ser No	Parts No	Name of Parts	Qty						
			295T	295G	295GA	295GJ	295D	295C	295QB
17	295T--06012A	Water inlet tube	1	1	1	1	1	1	1
18	295--06014A	Threaded plug	1	1	1	1	1	1	1
19	GB5782--86	Hex. bolt M8×12	6	6	6	6	6	6	6
20	GB93--87	Lock washer 8	6	6	6	6	6	6	6
21	295--06001	Pump body	1	1	1	1	1	1	1
22	295--06006	Water slinger	1	1	1	1	1	1	1
23	GB1152--74	Grease nipple M10×1	1	1	1	1	1	1	1
24	295--06005	Spring seat	1	1	1	1	1	1	1
25	295--06004	Water seal spring	1	1	1	1	1	1	1
26	295--06100	Water sealer	1	1	1	1	1	1	1
27	295--06002	Pump impeller	1	1	1	1	1	1	1
28	295--06003	Water pump gasket	1	1	1	1	1	1	1

(295T) Air Intake System— 1

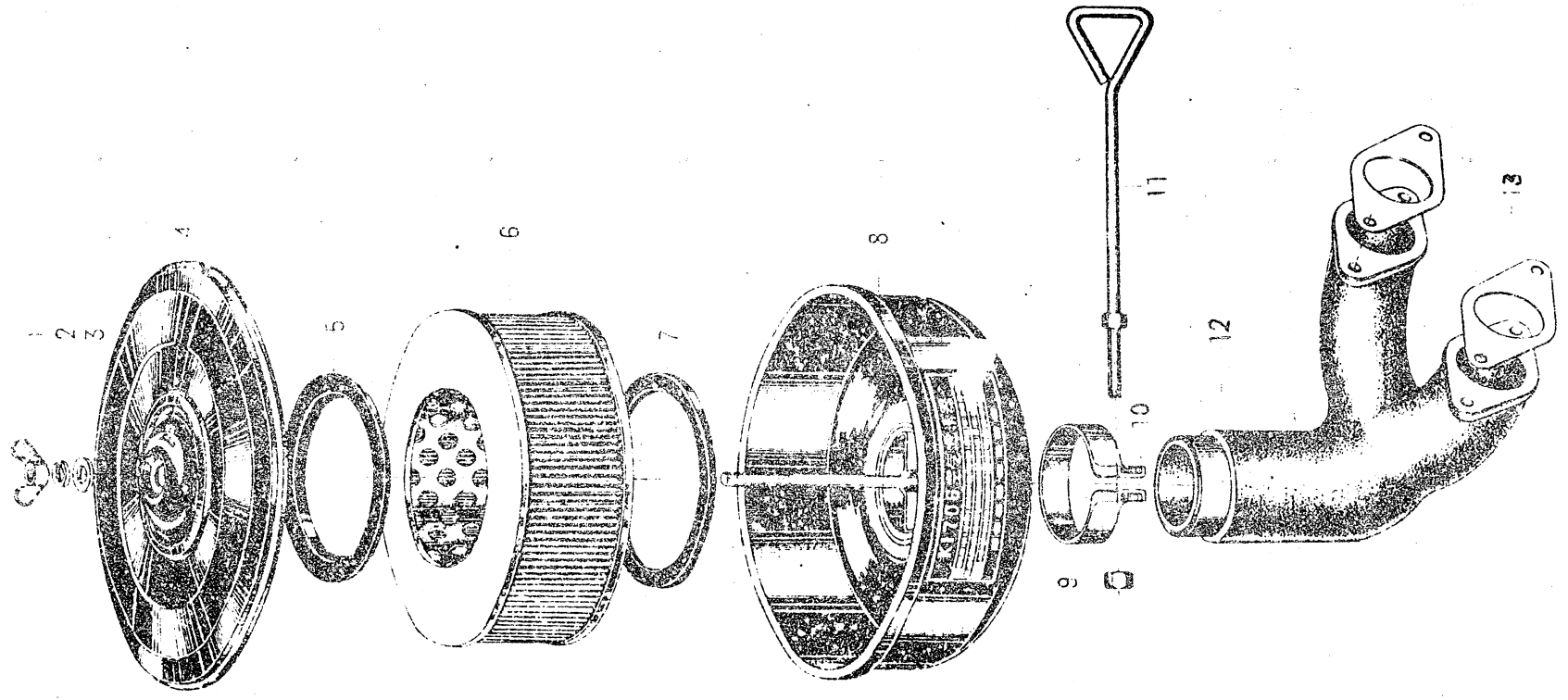


(295T) Air Intake System----- I

Ser No	Parts No	Name of Parts	Qty
			295T
1	295 07110	Filter oil container assembly	1
2	295 07101	Seal ring	1
3	295 07120	Fine filter	1
4	295 07102	Rubber seal ring	1
5	295 07133	Fine filter cartridge	1
6	295 07130	Fine filter assembly	1
7	GB67 85	Screw M6 × 25	1
8	295 07140	Primary filter	1
9	GB6170 86	Nut M6	1
10	295 07003	Air filter gasket	1
11	295 07001A	Air inlet manifold	1
12	295 03022	Air inlet manifold gasket	2
13	GB5783—86	Hex. bolt M8 × 25	2
14	GB93—87	Lock washer 8	2
15	GB6170—86	Nut M8	2

(295G, 295GA, 295GJ, 295D, 295C)

Air Intake System— II

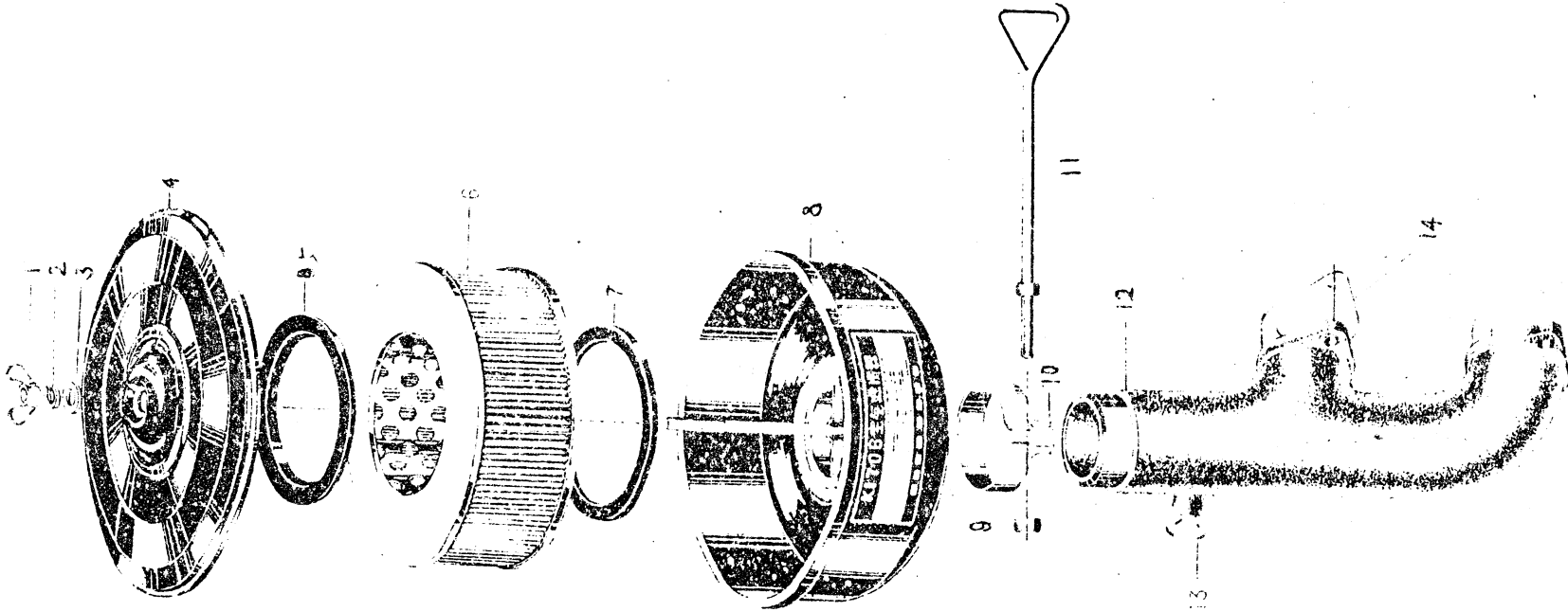


(295G、295GA、295GJ、295D、295C)

Air Intak System— II

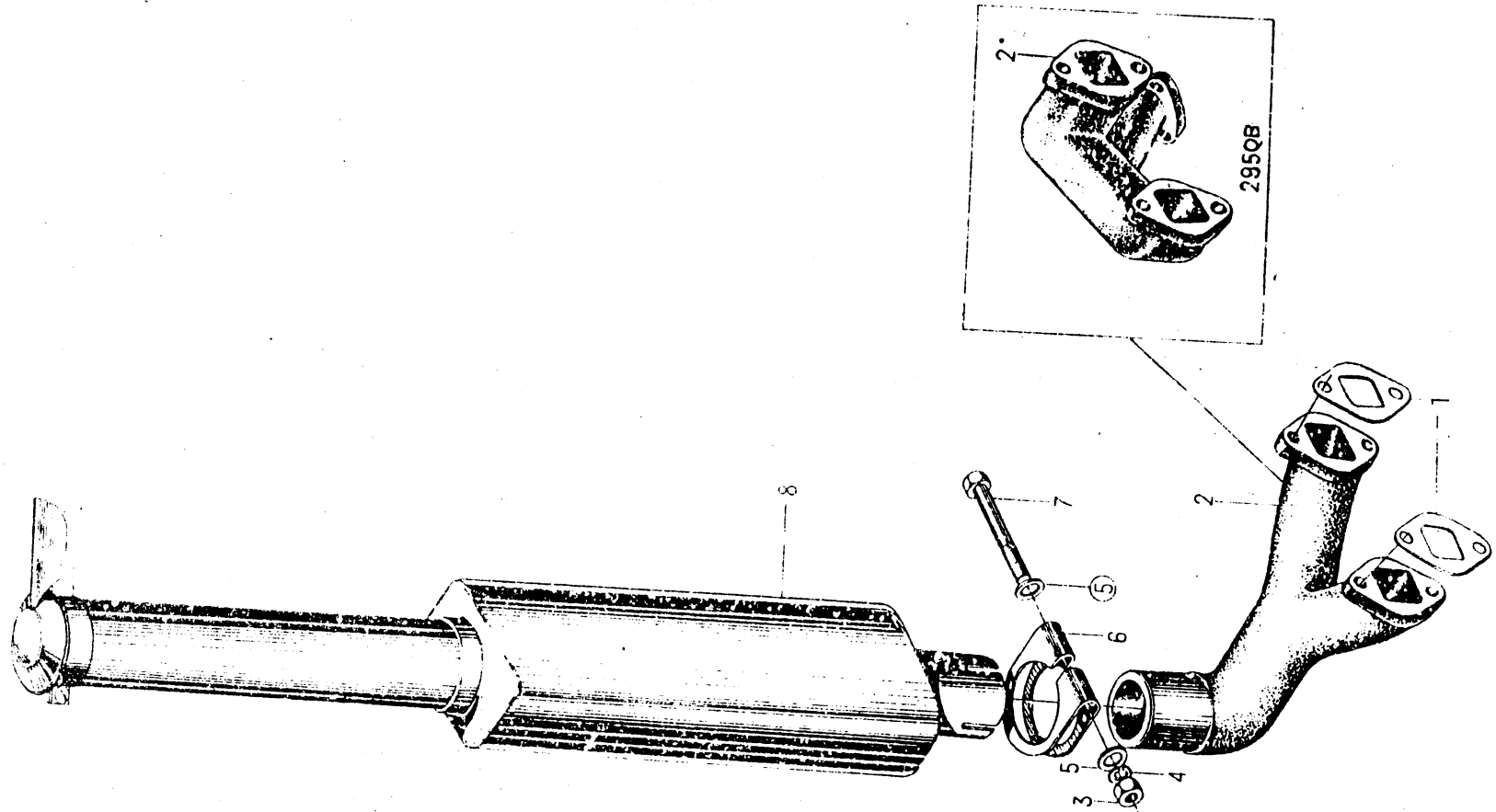
Ser No	Parts No	Name of Parts	Qty				
			295G	295GA	295GJ	295D	295C
1	GB62--88	Nut M6	1	1	1	1	1
2	GB93--87	Lock washer 6	1	1	1	1	1
3	GB97.1--85	Flat washer 6	1	1	1	1	1
4	K1706--0001	Upper cap	1	1	1	1	1
5	K1706--0002A	Rubber seal ring	1	1	1	1	1
6	K1706--1000	Filter	1	1	1	1	1
7	K1706--0002B	Rubber seal ring	1	1	1	1	1
8	K1706--4000	Body	1	1	1	1	1
9	GB6170--86	Nut M6	1	1	1	1	1
10	K1706--9001	Clamp	1	1	1	1	1
11	K1706--9002	Tightening bolt assembly	1	1	1	1	1
12	295G--07001	Air inlet manifold	1	1	1	1	1
13	295-03022	Air inlet manifold gasket	2	2	2	2	2

(295QB) Air Intake System- --- III



(295QB) Air Intak System— III

Ser No	Parts No	Name of Parts	Qty
			295QB
1	GB62--88	Nut M6	1
2	GB93--87	Lock washer 6	1
3	GB97.1-85	Flat washer 6	1
4	K1706--0001	Upper cap	1
5	K1706--0002A	Rubber seal ring	1
6	K1706--1000	Filter	1
7	K1706--0002B	Rubber seal ring	1
8	K1706--4000	Body	1
9	GB6170--86	Nut M6	1
10	K1706--9001	Clamp	1
11	K1706--9002	Tightening bolt assembly	1
12	295QB--07001	Air inlet manifold	1
13	295QB--07002	Preheating washer	1
14	295--03022	Air inlet manifold gasket	2



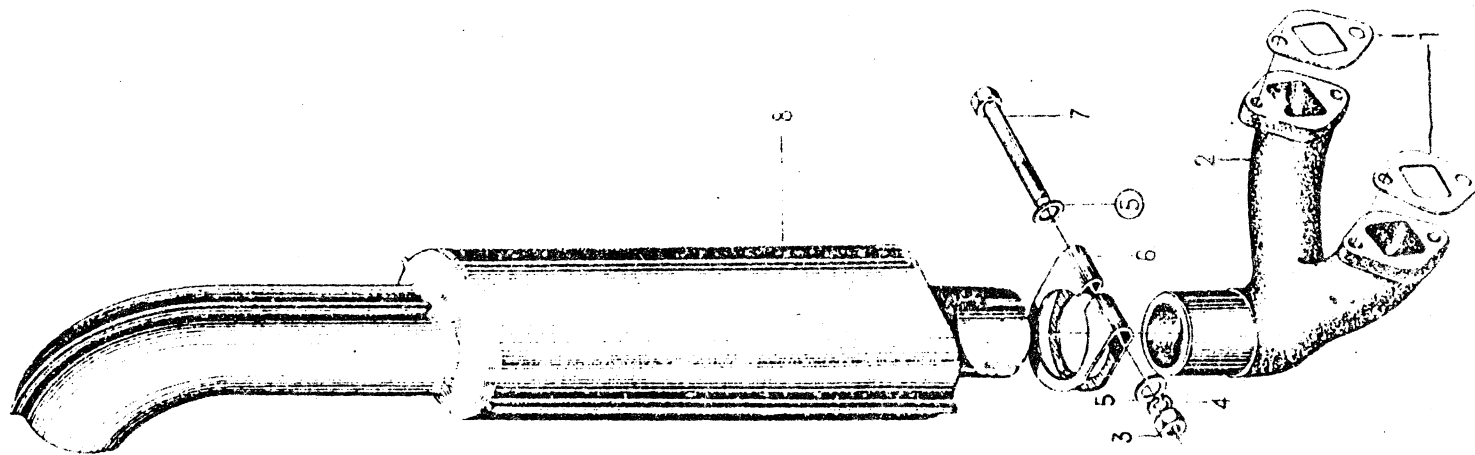
(295T, 295QB)

Exhaust System—I

Ser No	Parts No	Name of Parts	Qty	
			295T	295QB
1	295-03015	Exhaust manifold gasket	2	2
2	295-08001	Exhaust manifold	1	
2*	295QB-08001	Exhaust manifold		1
3	GB6170-86	Nut M10	1	
4	GB93-87	Lock washer 10	1	
5	GB97.1-85	Flat washer 10	2	
6	295-08002	Muffler clamp	1	
7	GB5782-86	Hex. bolt M10×90	1	
8	295T-08100A	Muffler	1	

(295G, 295GA, 295GJ, 295D)

Exhaust System — II

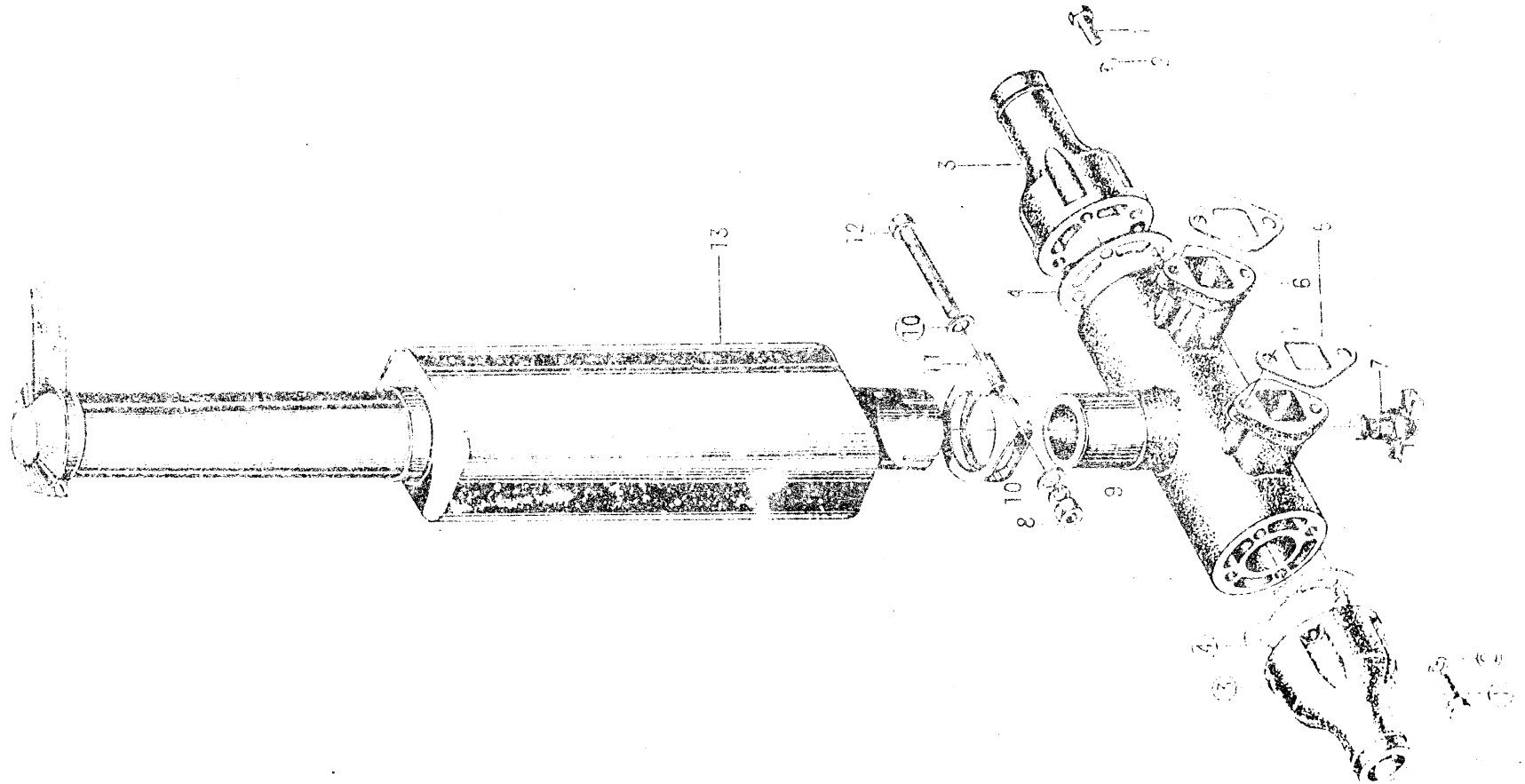


(295G, 295GA, 295GJ, 295D)

Exhaust System—— 11

Ser No	Parts No	Name of Parts	Qty			
			295G	295GA	295GJ	295D
1	295—03015	Exhaust manifold gasket	2	2	2	2
2	295G - 08001	Exhaust manifold	1	1	1	1
3	GB6170 - 86	Nut M10	1	1	1	1
4	GB93 - 87	Lock washer 10	1	1	1	1
5	GB97.1 - 85	Flat washer 10	2	2	2	2
6	295—08002	Muffler clamp	1	1	1	1
7	GB5782 - 86	Hex. bolt M10×90	1	1	1	1
8	295 - 08100	Muffler	1	1	1	1

(295C) Exhaust System III

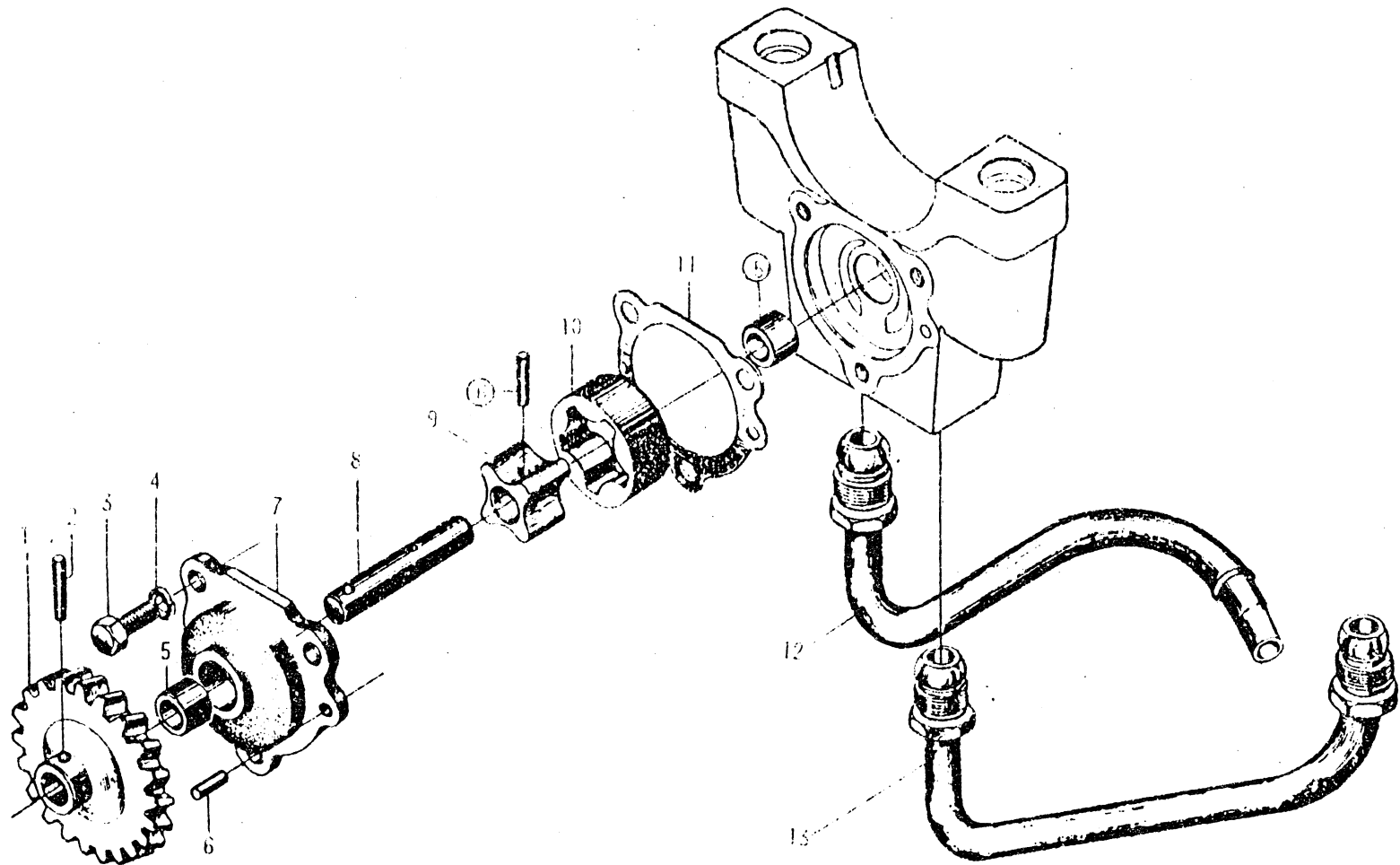


(295C) Exhaust System — III

Ser No	Parts No	Name of Parts	Qty
			295C
1	GB5783—86	Hex. bolt M8 × 25	8
2	GB93—87	Lock washer 8	8
3	295C—08202	Exhaust manifold end cover	2
4	295C—08203	Gasket	2
5	295—03015	Exhaust manifold gasket	2
6	295C—08201	Exhaust manifold	1
7	295—01600	Water drain cock ZM14	1
8	GB6170—86	Nut M10	1
9	GB93—87	Lock washer 10	1
10	GB97.1—85	Flat washer 10	2
11	295—08002	Muffler clamp	1
12	GB5782—86	Hex. bolt M10 × 90	1
13	295T—08100A	Muffler	1

(295T, 295G, 295GA, 295GJ, 295D, 295C, 295QB)

Engine Oil Pump Assembly



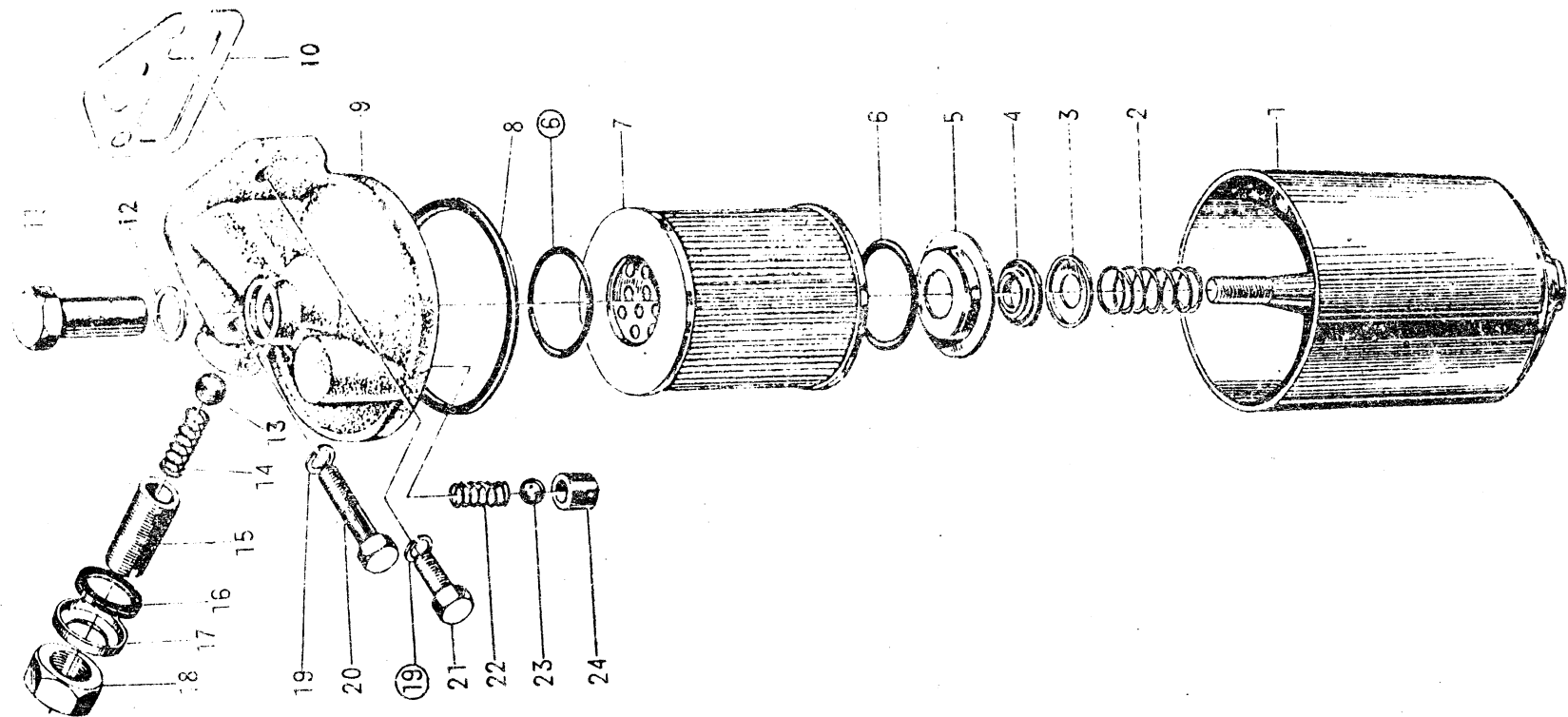
(295T, 295G, 295GA, 295GJ, 295D, 295C, 295QB)

Engine Oil Pump Assembly

Ser No	Parts No	Name of Parts	Qty						
			295T	295G	295GA	295GJ	295D	295C	295QB
1	295—09301	Engine oil pump gear	1	1	1	1	1	1	1
2	GB117—86	Pin A5×22	1	1	1	1	1	1	1
3	GB5783—86	Hex. bolt M8×20	3	3	3	3	3	3	3
4	GB93—87	Lock washer 8	3	3	3	3	3	3	3
5	295—09304	Bushing	2	2	2	2	2	2	2
6	GB119—86	Pin A6×18	2	2	2	2	2	2	2
7	295—09303	Engine oil pump case	1	1	1	1	1	1	1
8	295—09302	Engine oil pump shaft	1	1	1	1	1	1	1
9	295—09306	Inner rotor	1	1	1	1	1	1	1
10	295—09305	Outer rotor	1	1	1	1	1	1	1
11	295—01002	Engine oil pump gasket	1	1	1	1	1	1	1
12	295—09200	Engine oil pump inlet tube	1	1	1	1	1	1	1
13	295—09400	Engine oil pump outlet tube	1	1	1	1	1	1	1

(295T, 295G, 295GA, 295GJ, 295D, 295C, 295QB)

Engine Oil Filter Assembly

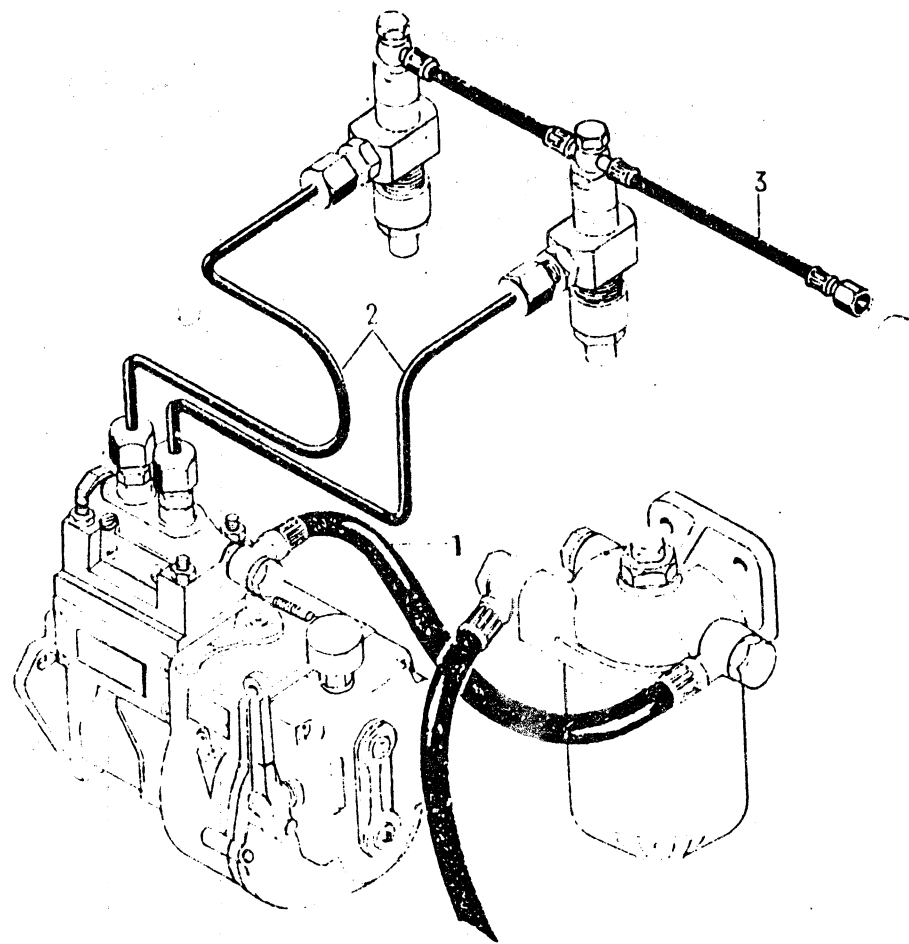


(295T、295G、295GA、295GJ、295D、295C、295QB) Engine Oil Filter Assembly

Ser No	Parts No	Name of Parts	Qty						
			295T	295G	295GA	295GJ	295D	295C	295QB
1	J0810 II - 3000	Filter case	1	1	1	1	1	1	1
2	J0810 II - 0008	Spring	1	1	1	1	1	1	1
3	J0810 II - 0005	Bracket plate	1	1	1	1	1	1	1
4	J0810 II - 0006	Seal ring	1	1	1	1	1	1	1
5	J0810 II - 0007	Support disc	1	1	1	1	1	1	1
6	J0810 II - 0004	Seal ring	2	2	2	2	2	2	2
7	J0810 II - 1000	Filter cartridge	1	1	1	1	1	1	1
8	J0810 II - 0003	Big seal ring	1	1	1	1	1	1	1
9	J0810 II - 2001	Filter seat	1	1	1	1	1	1	1
10	295 - 01021	Filter seat gasket	1	1	1	1	1	1	1
11	J0810 II - 0001	Pulling rod nut	1	1	1	1	1	1	1
12	J0810 II - 0002	Flat washer	1	1	1	1	1	1	1
13	GB308 - 84	Steel ball 12	1	1	1	1	1	1	1
14	J0810 II - 2007	Pressure regulating valve spring	1	1	1	1	1	1	1
15	J0810 II - 2005	Adjusting screw	1	1	1	1	1	1	1
16	J0810 II - 2006	Rectangle gasket	1	1	1	1	1	1	1
17	J0810 II - 2004	Rectangle gasket seat	1	1	1	1	1	1	1
18	GB6171 - 86	Nut M18 × 1.5	1	1	1	1	1	1	1
19	GB93 - 87	Lock washer 8	2	2	2	2	2	2	2
20	GB5782 - 86	Hex. bolt M8 × 48	1	1	1	1	1	1	1
21	GB5783 - 86	Hex. bolt M8 × 22	1	1	1	1	1	1	1
22	J0810 II - 2002	Spring	1	1	1	1	1	1	1
23	GB308 - 84	Steel ball 10	1	1	1	1	1	1	1
24	J0810 II - 2003	Valve seat	1	1	1	1	1	1	1

(295T, 295G, 295GA, 295GJ, 295D)

Fuel System I

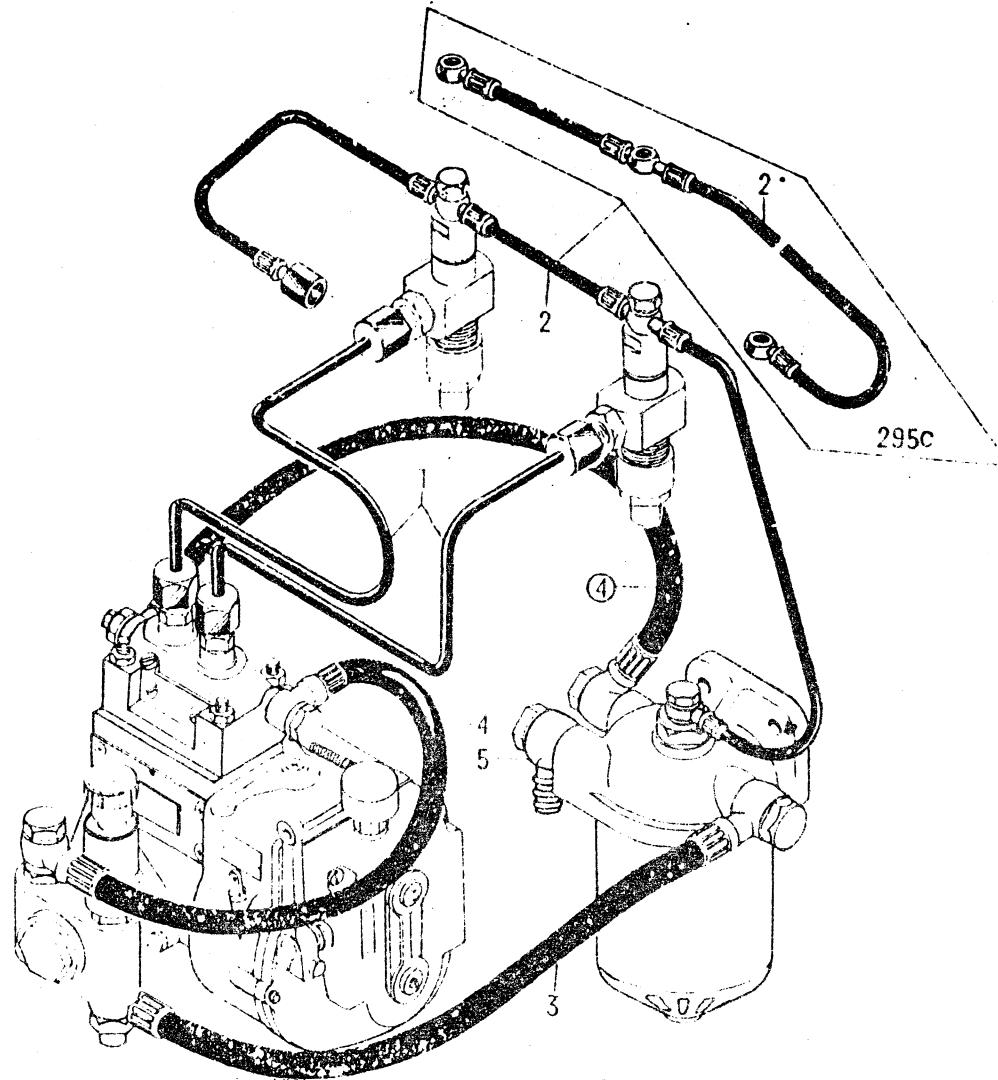


(295T, 295G, 295GA, 295GJ, 295D)

Fuel System—I

Ser No	Parts No	Name of Parts	Qty				
			295T	295G	295GA	295GJ	295D
1	295T-10300C	Injection pump fuel inlet tube	1	1	1	1	1
2	295-10100A	High pressure fuel tube assembly	1	1	1	1	1
3	295-10600D	Injection nozzle fuel return tube	1	1	1	1	1

(295C, 295QB) Fuel System— II



(295C, 295QB)

Fuel System II

Ser No	Parts No	Name of Parts	Qty	
			295C	295QB
1	295-10100A	High pressure fuel tube assembly	1	1
2	295QB-10600	Injection nozzle fuel return tube		1
2	295C-10600	Injection nozzle fuel return tube	1	
3	295C-10500	Fuel feed pump inlet tube	1	1
4	295C-10400	Injection pump fuel inlet tube	2	2
5	295T-01016	Pipe union (A)	1	1

(295T, 295G, 295GA, 295GJ, 295D, 295C, 295QB)

Fuel Filter Assembly

Ser No	Parts No	Name of Parts	Qty						
			295T	295G	295GA	295GJ	295D	295C	295QB
1	C0708--3000	Filter case	1	1	1	1	1	1	1
2	C0810--0012	Spring	1	1	1	1	1	1	1
3	C0810--0013	Bracket plate	1	1	1	1	1	1	1
4	C0810--0011	Seal ring	1	1	1	1	1	1	1
5	C0708--0003	Support disc	1	1	1	1	1	1	1
6	C0708--0005	Seal ring	2	2	2	2	2	2	2
7	C0708--1000	Filter cartridge	1	1	1	1	1	1	1
8	C0708--0006	Big seal ring	1	1	1	1	1	1	1
9	C0810--0010	Tube connecting bolt	2	2	2	2	2	3	3
9	C0708--0008	threaded plug	1	1	1	1	1		
10	C0810--0009	Flat washer	5	5	5	5	5	6	6
11	C0708--0002	Filter seat	1	1	1	1	1	1	1
12	C0810--0007	Flat washer	1	1	1	1	1	1	1
13	C0810--0003	Pulling rod nut	1	1	1	1	1	1	1
14	C0810--0004	Flat washer	1	1	1	1	1	2	2
15	C0810--0005	Vent bolt	1	1	1	1	1		
15	295--03021	Tube connecting bolt						1	1
16	GB5783--86	Hex. bolt	2	2	2	2	2	2	2
17	GB93--87	Lock washer	2	2	2	2	2	2	2

(295C, 295QB)

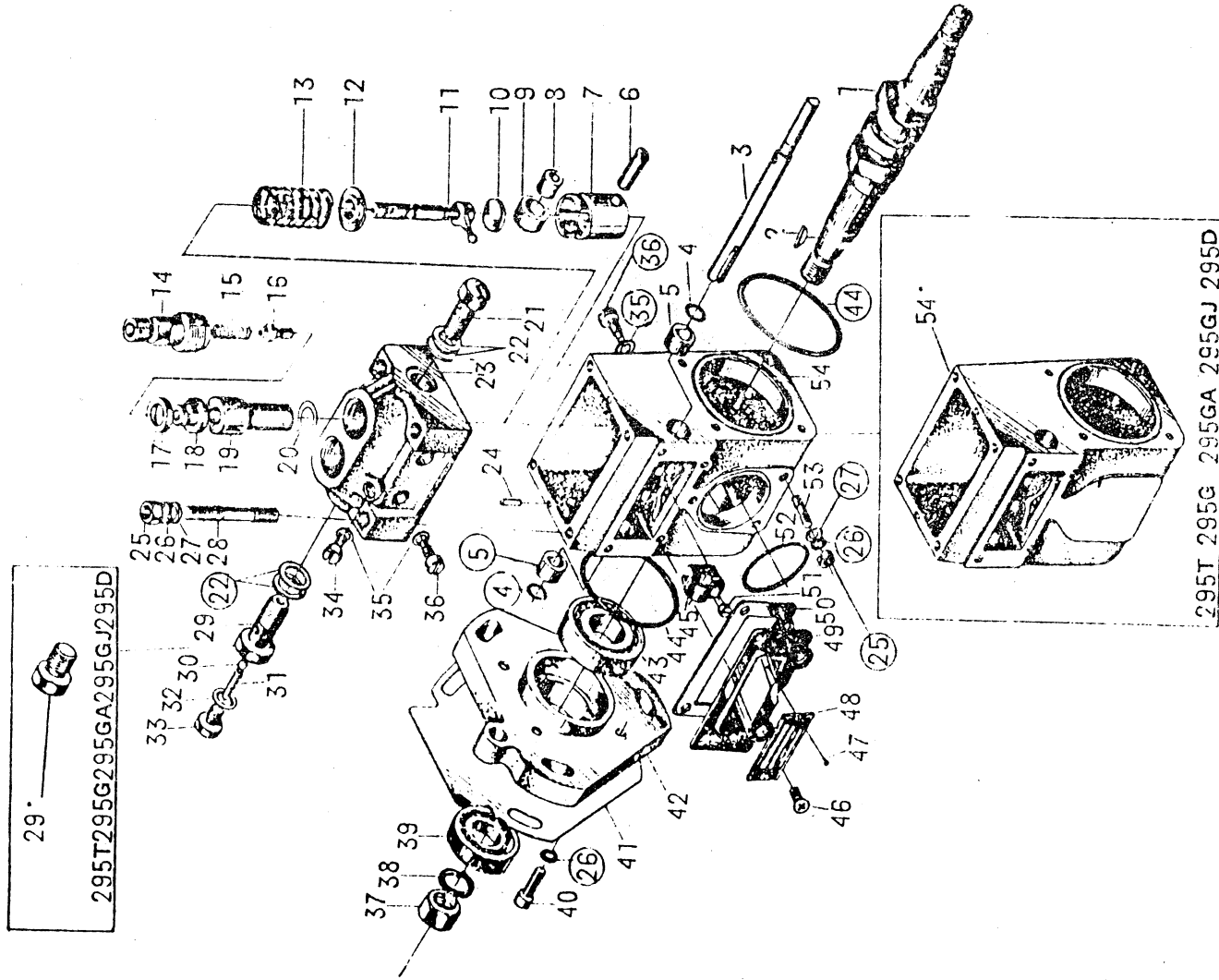
Fuel Feed Pump Assembly

Ser No	Parts No	Name of Parts	Qty	
			295C	295QB
1	ISB--00--013	Threaded plug	1	1
2	ISB--00--015	Flat washer	1	1
3	ISB--00--012	Pump plunger spring	1	1
4	ISB--00--011	Pump plunger	1	1
5	ISB--04--01	Pump body	1	1
6	ISB--03--02	Tappet guide	1	1
7	ISB--03--01	Tappet	1	1
8	ISB--02--01	Push rod	1	1
9	ISB--02--03	Roller pin	1	1
10	ISB--02--04	Guiding shaft	2	2
11	ISB--02--02	Roller	1	1
12	ISB--00--010	Stuck spring	1	1
13	ISB--00--01	Fuel outlet tube bolt	1	1
14	ISB--00--03	Flat washer	4	4
15	ISB--00--04	Fuel outlet tube connector seat	1	1
16	ISB--00--06	Check valve spring	2	2
17	ISB--00--07	Check valve	2	2
18	ISB--04--02	Check valve seat	2	2
19	ISB--00--05	Washer	2	2
20	ISB--01--06	Hand pump pull cap	1	1
21	ISB--01--08	Hand pump pin	1	1
22	ISB--01--07	Hand pump spring	1	1

Ser No	Parts No	Name of Parts	Qty	
			295C	295QB
23	ISB-01-01	Hand pump body	1	1
24	ISB-01-04	Hand pump pull rod	1	1
25	ISB-01-03	Hand pump plunger	1	1
26	ISB-01-02	Rubber pad	1	1
27	ISB-01-05	Hand pump body connector	1	1
28	ISB-05-00	Fuel strainer	1	1
29	ISB-00-08	Fuel inlet tube screw	1	1

(295T, 295G, 295GA, 295GJ, 295D, 295C, 295QB)

Injection Pump Assembly



(295T, 295G, 295GA, 295GJ, 295D, 295C, 295QB)

Injection Pump Assembly

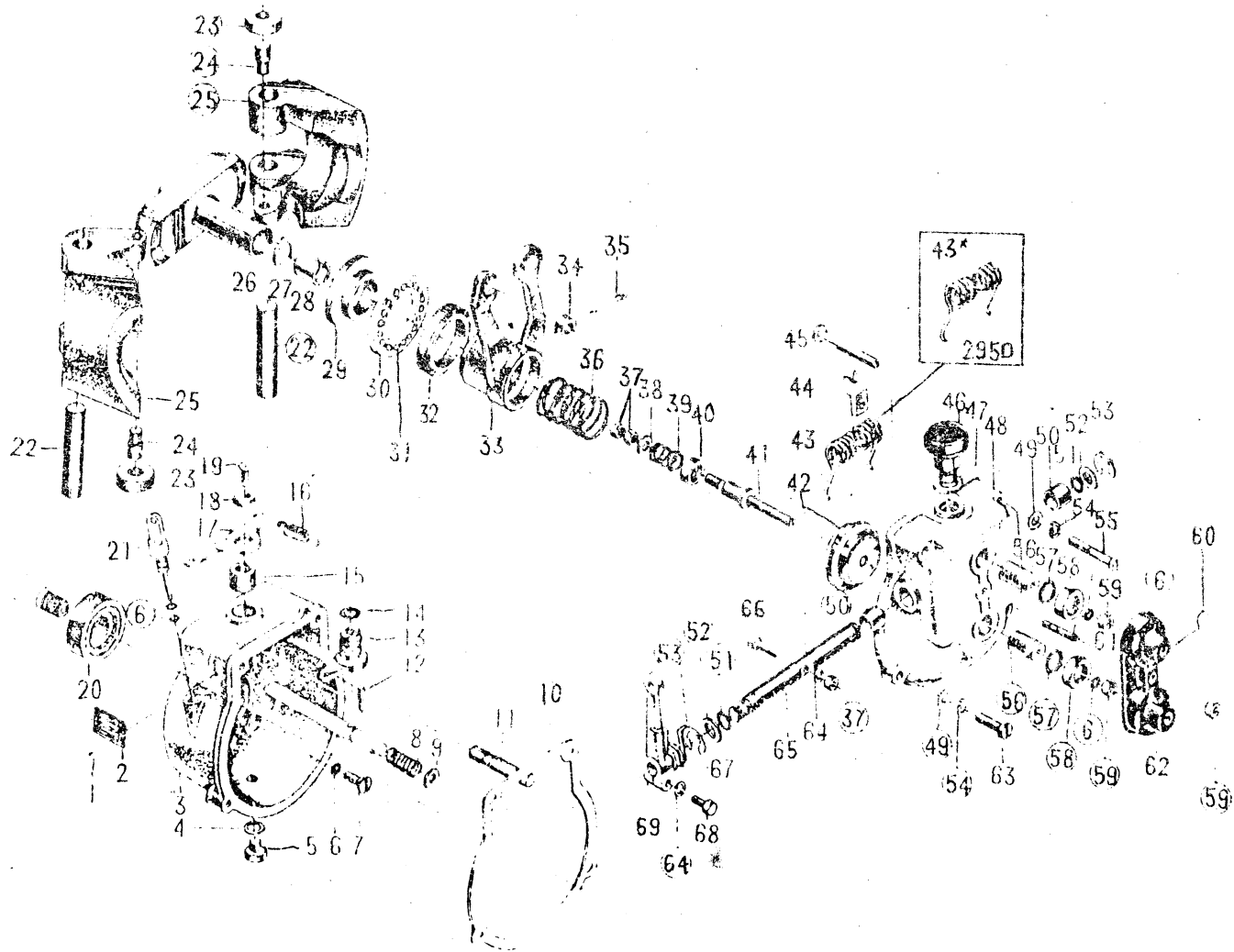
Ser No	Parts No	Name of Parts	Qty						
			295T	295G	295GA	295GJ	295D	295C	295QB
1	BI2 1.0.0.0 01	Cam shaft	1	1	1	1	1	1	1
2	GB1099 79	Key 3 × 16	1	1	1	1	1	1	1
3	BI2 6.0.0.0 01	Pull rod	1	1	1	1	1	1	1
4	BI2 0.0.0.0 13	Rectangle seal ring	2	2	2	2	2	2	2
5	BI2 2.0.0.0 01	Pull rod positioning bushing	2	2	2	2	2	2	2
6	BI2 3.0.0.0 04	Roller pin	2	2	2	2	2	2	2
7	BI2 3.0.0.0 01	Push rod case	2	2	2	2	2	2	2
8	BI2 3.0.0.0 03	Roller inner ring	2	2	2	2	2	2	2
9	BI2 3.0.0.0 05	Roller	2	2	2	2	2	2	2
10	BI2 3.0.0.0 02	Adjusting block	2	2	2	2	2	2	2
11	BI2 1.1.1.1 00	Plunger assembly	2	2	2	2	2	2	2
12	BI2 0.0.0.0 08	Spring seat, lower	2	2	2	2	2	2	2
13	BI2 0.0.0.0 01	Plunger spring	2	2	2	2	2	2	2
14	BI2 1.0.0.0 01	Delivery valve tightening seat	2	2	2	2	2	2	2
15	BI2 1.0.0.0 02	Delivery valve spring	2	2	2	2	2	2	2
16	BI2 1.2.0.0 01a	Delivery	2	2	2	2	2	2	2
17	BI2 1.0.0.0 07	Delivery valve washer	2	2	2	2	2	2	2
18	BI2 1.2.0.0 02	Delivery valve seat	2	2	2	2	2	2	2
19	BI2 1.1.1.0 01	Plunger cylinder	2	2	2	2	2	2	2
20	BI2 1.0.0.0 04	Plunger cylinder gasket	2	2	2	2	2	2	2
21	BI2 0.0.0.0 12	Fuel inlet tube adaptor	1	1	1	1	1	1	1
22	BI2 0.0.0.0 10	Flat washer	3	3	3	3	3	4	4

Ser No	Parts No	Name of Parts	Qty						
			295T	295G	295GA	295GJ	295D	295C	295QB
23	B12 1·0·0·0-05	Pump case, upper	1	1	1	1	1	1	1
24	GB119-86	Pin A4×10	2	2	2	2	2	2	2
25	GB6170-86	Nut M6	4	4	4	4	4	7	7
26	GB93-87	Lock washer	8	8	8	8	8	11	11
27	GB848-85	Flat washer 6	4	4	4	4	4	7	7
28	GB900-88	Stud M6×35	4	4	4	4	4	4	4
29	B12-5·0·0·0-01	Fuel return tube connector						1	1
29	B12-1·0·0·0-06	Threaded plug	1	1	1	1	1		
30	GB308-84	Steel ball 5Vb						1	1
31	B12-5·0·0·0-02	Fuel return valve spring						1	1
32	B12-5·0·0·0-03	Flat washer						1	1
33	B12-5·0·0·0-04	Plug						1	1
34	B12-1·0·0·0-03	Vent screw	1	1	1	1	1	1	1
35	B12-0·0·0·0-06	Flat washer	5	5	5	5	5	5	5
36	B12-0·0·0·0-07	Positioning screw	4	4	4	4	4	4	4
37	GB6170-86	Nut M12	1	1	1	1	1	1	1
38	GB93-87	Lock washer 12	1	1	1	1	1	1	1
39	HG4-692-67	Oil seal PD 17×35×10	1	1	1	1	1	1	1
40	GB70-85	Screw M6×16	4	4	4	4	4	4	4
41	295-01032	Pump gasket	1	1	1	1	1	1	1
42	B12-0·0·0·0-05	Flange	1	1	1	1	1	1	1
43	GR297-84	Bearing 7203	1	1	1	1	1	1	1
44	B12-0·0·0·0-14	O ring	2	2	2	2	2	2	2

Ser No	Parts No	Name of Parts	Qty						
			295T	295G	295GA	295GJ	295D	295C	295QB
45	B12-0·0·0-02	Shifting fork	2	2	2	2	2	2	2
46	GB819-85	Screw M5×8	4	4	4	4	4	4	4
47	B12-7·0·0-03	Round head rivet	2	2	2	2	2	2	2
48	B12-7·0·0-02	Name plate	1	1	1	1	1	1	1
49	B12-7·0·0-01	Window cover	1	1	1	1	1	1	1
50	B12-0·0·0-04	Window cover gasket*	1	1	1	1	1	1	1
51	B12-0·0·0-03	Tightening screw	2	2	2	2	2	2	2
52	B12-0·0·0-15	O ring						1	1
53	GB900-88	Stud M6×14						3	3
54	B12-2·0·0-02	Pump case, lower						1	1
54*	B12-2·0·0-02A	Pump case, lower	1	1	1	1	1		

(295T, 295G, 295GA, 295GJ, 295D, 295C, 295QB)

Governor Assembly



(295T、295G、295GA、295GJ、295D、295C、295QB)

Governor Assembly

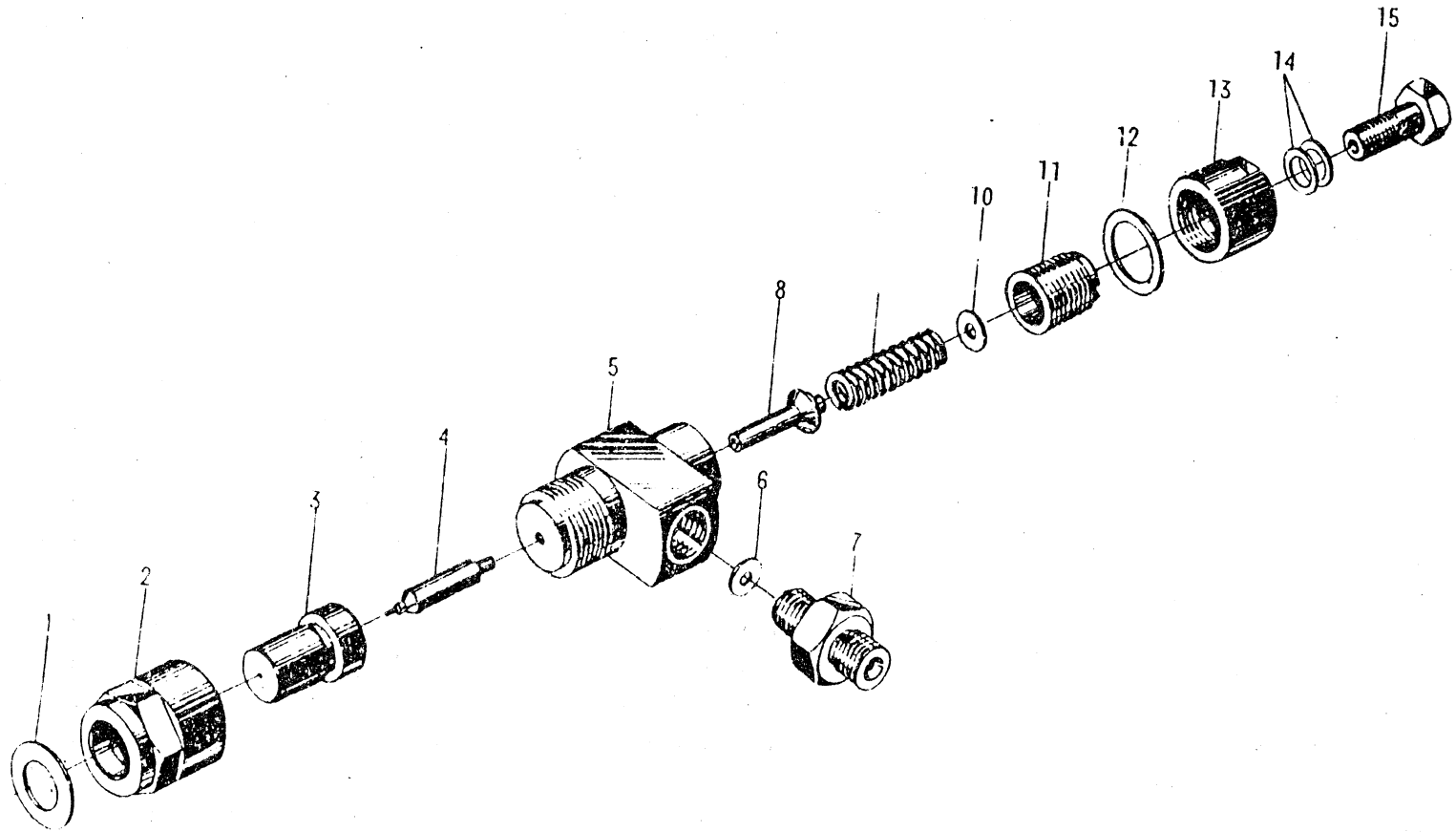
Ser No	Parts No	Name of Parts	Qty						
			295T	295G	295GA	295GJ	295D	295C	295QB
1	T ₁ 4·0·0·0 10	Aluminium rivet	2	2	2	2	2	2	2
2	T ₁ 4·0·0·0 09	Name plate	1	1	1	1	1	1	1
3	T ₁ 1·0·0·0 05	Bracket seat	1	1	1	1	1	1	1
4	T ₁ 1·0·0·0 06	Flat washer	1	1	1	1	1	1	1
5	T ₁ 4·0·0·0 07	Plug	1	1	1	1	1	1	1
6	GB1235 76	Seal ring 8×1.9 "O" type	8	8	8	8	8	8	8
7	GB819 85	Screw M6×15	4	4	4	4	4	4	4
8	T ₁ 0·0·0·0 05	Ancillary spring	1	1	1	1	1	1	1
9	T ₁ 0·0·0·0 09	Washer	1	1	1	1	1	1	1
10	T ₁ 0·0·0·0 03	Polyurethane rubber gasket	1	1	1	1	1	1	1
11	T ₁ 4·0·0·0 11	Guiding pin	1	1	1	1	1	1	1
12	BI2 6·0·0·0 02	Shutdown stop pin	1	1	1	1	1	1	1
13	T ₁ 4·0·0·0 04	Shutdown control rod	1	1	1	1	1	1	1
14	GB1235 76	O ring 13 1.9	1	1	1	1	1	1	1
15	T ₁ 4·0·0·0 03	Shutdown rod bushing	1	1	1	1	1	1	1
16	T ₁ 4·0·0·0 08	Spring	1	1	1	1	1	1	1
17	T ₁ 4·0·0·0 02	Shutdown control rod	1	1	1	1	1	1	1
18	T ₁ 4·0·0·0 01	Washer	1	1	1	1	1	1	1
19	GB819 85	Screw M5×10	1	1	1	1	1	1	1
20	GB297 84	Bearing 7203	1	1	1	1	1	1	1
21	T ₁ 1·0·0·0 00	Oil dipstick	1	1	1	1	1	1	1
22	T ₁ 5·0·0·0 01	Flying weight shaft	2	2	2	2	2	2	2
23	T ₁ 5·0·0·0 05	Roller	2	2	2	2	2	2	2

Ser No	Parts No	Name of Parts	Qty						
			295T	295G	295GA	295GJ	295D	295C	295QB
24	T ₁ -5.0.0-04	Sliding pin	2	2	2	2	2	2	2
25	T ₁ -5.0.0-03	Flying weight	2	2	2	2	2	2	2
26	T ₁ -5.0.0-02	Flying weight seat	1	1	1	1	1	1	1
27	T ₁ -0.0.0-06	Lock washer	1	1	1	1	1	1	1
28	T ₁ -0.0.0-08	Nut	1	1	1	1	1	1	1
29	T ₁ -0.0.0-07	Pushing panel	1	1	1	1	1	1	1
30	T ₁ -6.0.0-01	Anti-friction frame	1	1	1	1	1	1	1
31	GB308-84	Steel ball 3/16" b	18	18	18	18	18	18	18
32	T ₁ -2.0.0-02	Bushing	1	1	1	1	1	1	1
33	T ₁ -2.0.0-01	Sliding fork	1	1	1	1	1	1	1
34	T ₁ -0.0.0-04	Stop ring	1	1	1	1	1	1	1
35	GB91-86	Pin 2×16	1	1	1	1	1	1	1
36	T ₁ -0.0.0-01	Idle speed balancing spring	1	1	1	1	1	1	1
37	GB6170-86	Nut M6	3	3	3	3	3	3	3
38	T ₁ -3.1.0-04	Flat washer	1	1	1	1	1	1	1
39	T ₁ -3.1.0-03	Torque storage spring	1	1	1	1	1	1	1
40	T ₁ -3.1.0-02	Correction and compensation panel	1	1	1	1	1	1	1
41	T ₁ -3.1.0-01	Adjusting rod	1	1	1	1	1	1	1
42	T ₁ -3.0.0-12	Pressure disc	1	1	1	1	1	1	1
43	T ₁ -3.0.0-07	Governor spring (D=2.8mm)	1	1	1	1		1	1
43	T ₁ -3.0.0-07A	Governor spring (D=2.3mm)					1		
44	T ₁ -3.0.0-05	Positioner	1	1	1	1	1	1	1
45	T ₁ -3.0.0-06	Position limiting screw	1	1	1	1	1	1	1

Ser No	Parts No	Name of Parts	Qty						
			295T	295G	295GA	295GJ	295D	295C	295QB
46	T ₁ —7·0·0—00	Breather assembly	1	1	1	1	1	1	1
47	T ₁ —0·0·0—02	Flat washer	1	1	1	1	1	1	1
48	T ₁ —3·0·0—13	Rear cover	1	1	1	1	1	1	1
49	GB848—85	Flat washer 6	4	4	4	4	4	4	4
50	T ₁ —3·0·0—10	Speed control rod bushing	2	2	2	2	2	2	2
51	T ₁ —3·0·0—15	O-ring	2	2	2	2	2	2	2
52	T ₁ —3·0·0—16	Stop ring	2	2	2	2	2	2	2
53	GB896—86	Stop ring 9	2	2	2	2	2	2	2
54	GB93—87	Lock washer 5	4	4	4	4	4	4	4
55	GB65—85	Screw M6×38	2	2	2	2	2	2	2
56	T ₁ —3·0·0—02	Limiting helix sleeve	2	2	2	2	2	2	2
57	GB1235—76	O-ring 14·2·1	2	2	2	2	2	2	2
58	T ₁ —3·0·0—03	Nut	2	2	2	2	2	2	2
59	GB6170—86	Nut M6	3	3	3	3	3	3	3
60	T ₁ —0·0·0—12	Lead seal	1	1	1	1	1	1	1
61	T ₁ —0·0·0—11	Lead seal stud	1	1	1	1	1	1	1
62	T ₁ —0·0·0—10	Lead seal cap	1	1	1	1	1	1	1
63	GB65—85	Screw M6×20	2	2	2	2	2	2	2
64	GB93—87	Lock washer 5	2	2	2	2	2	2	2
65	T ₁ —3·0·0—11	Adjusting control shaft	1	1	1	1	1	1	1
66	T ₁ —3·0·0—04	Positioning bolt	1	1	1	1	1	1	1
67	T ₁ —3·0·0—09	Twist spring	1	1	1	1	1	1	1
68	GB5783—86	Hex. bolt M5×16	1	1	1	1	1	1	1
69	T ₁ —3·0·0—08	Speed controlling rod	1	1	1	1	1	1	1

(295T, 295G, 295GA, 295GJ, 295D, 295C, 295QB)

Injection Nozzle Assembly



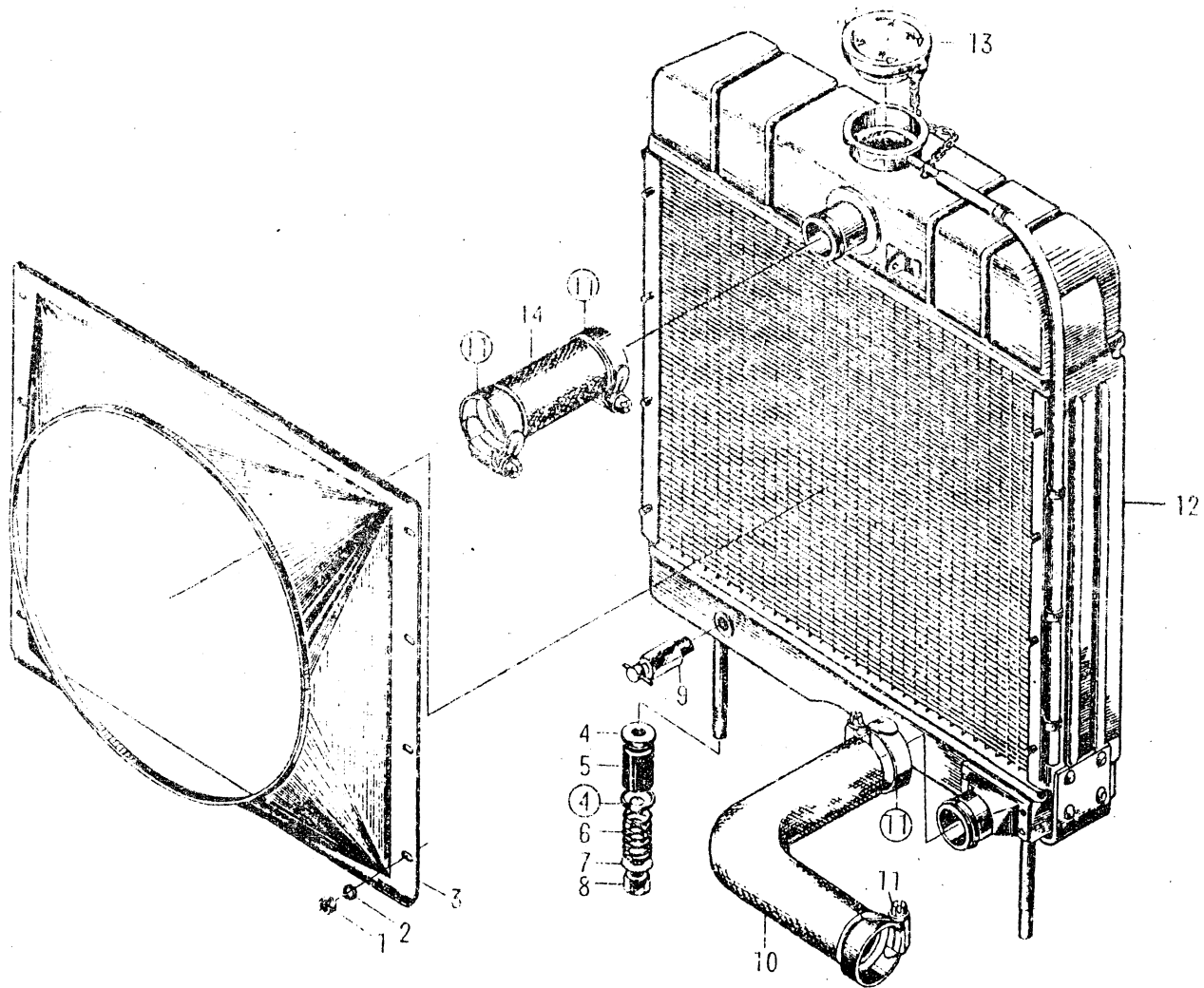
(295T, 295G, 295GA, 295GJ, 295D, 295C, 295QB)

Injection Nozzle Assembly

Ser No	Parts No	Name of Parts	Qty						
			295T	295G	295GA	295GJ	295D	295C	295QB
1	2021.00.02	Flat washer	1	1	1	1	1	1	1
2	2021.00.01	Injection nozzle tightening nut	1	1	1	1	1	1	1
3	2021.01.02	Needle valve body	1	1	1	1	1	1	1
4	2021.01.01	Needle valve	1	1	1	1	1	1	1
5	2021.00.01	Injection nozzle body	1	1	1	1	1	1	1
6	2021.00.14	Flat washer	1	1	1	1	1	1	1
7	2021.00.13	Fuel inlet adaptor	1	1	1	1	1	1	1
8	2021.00.03	Pressure rod	1	1	1	1	1	1	1
9	2021.00.07	Injection nozzle spring	1	1	1	1	1	1	1
10	2021.00.06	Flat washer	1	1	1	1	1	1	1
11	2021.00.08	Pressure adjusting screw	1	1	1	1	1	1	1
12	2021.00.09	Flat washer	1	1	1	1	1	1	1
13	2021.00.05	Protection cap	1	1	1	1	1	1	1
14	2021.00.10	Flat washer	2	2	2	2	2	2	2
15	2021.00.11	Tube connecting bolt	1	1	1	1	1	1	1

(295T, 295GA, 295D)

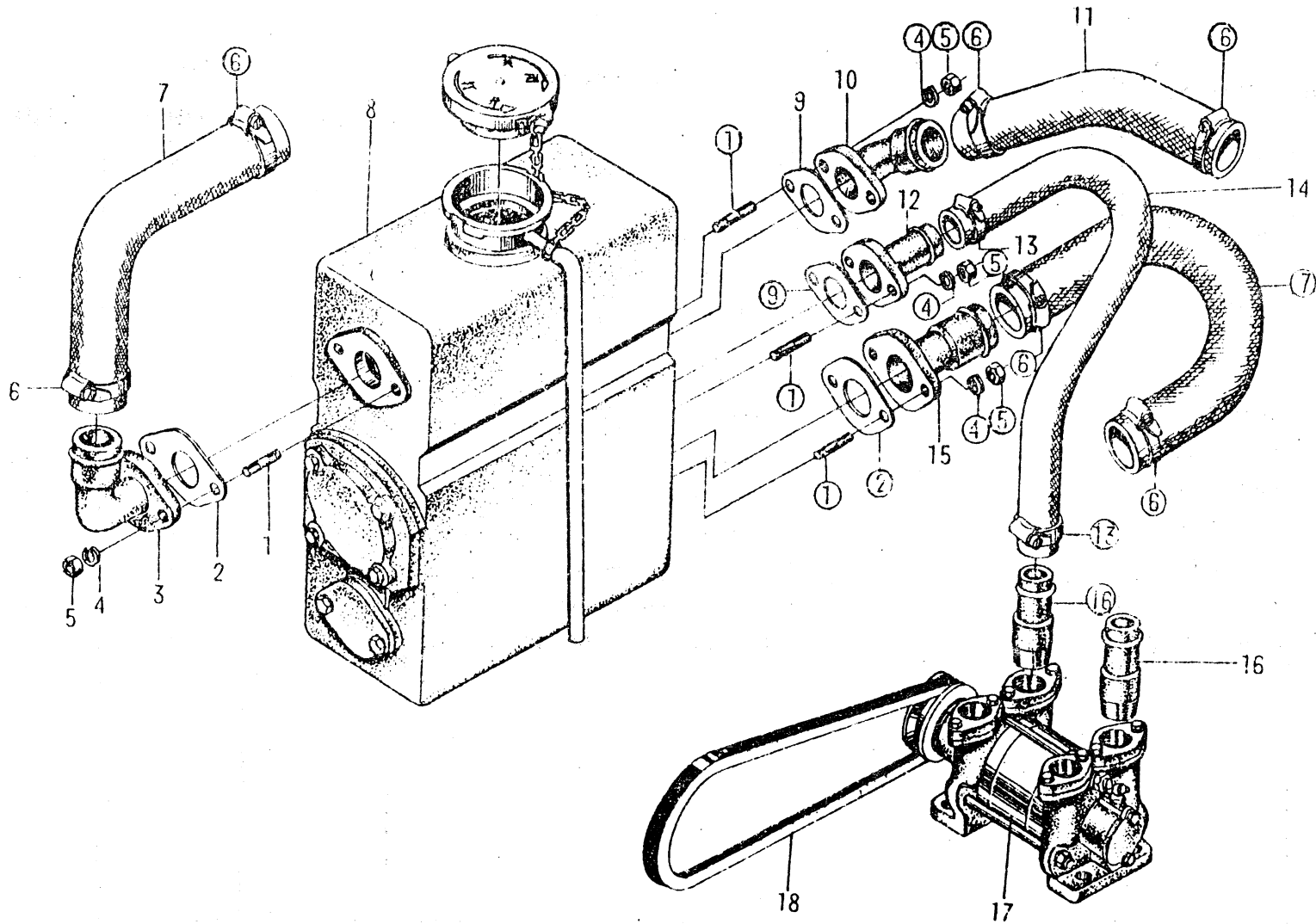
Radiator Assembly



(295T, 295GA, 295D) Radiator Assembly

Ser No	Parts No	Name of Parts	Qty		
			295T	295GA	295D
1	GB6170—86	Nut M6	8	8	8
2	GB93—87	Lock washer 6	8	8	8
3	295—15004A	Air guiding shield	1	1	1
4	25. 31. 116L	Rubber cap	4	4	4
5	25. 31. 115L	Rubber pad	2	2	2
6	295—15001	Spring	2	2	2
7	GB96—85	Flat washer 12	2	2	2
8	GB41—86	Nut M12	2	2	2
9	295—15600	Drain cock	1	1	1
10	295T—06016	Radiator rubber tube	1	1	1
11	295—06400	Tube clamp (1 1/2")	4	4	4
12	295—15000	Radiator sub - assembly	1	1	1
13	295—15500	Radiator cap sub - assembly	1	1	1
14	295T—03023	Radiator rubber tube 38×46×115	1	1	1

(295C) Sea Water Cooling Assembly

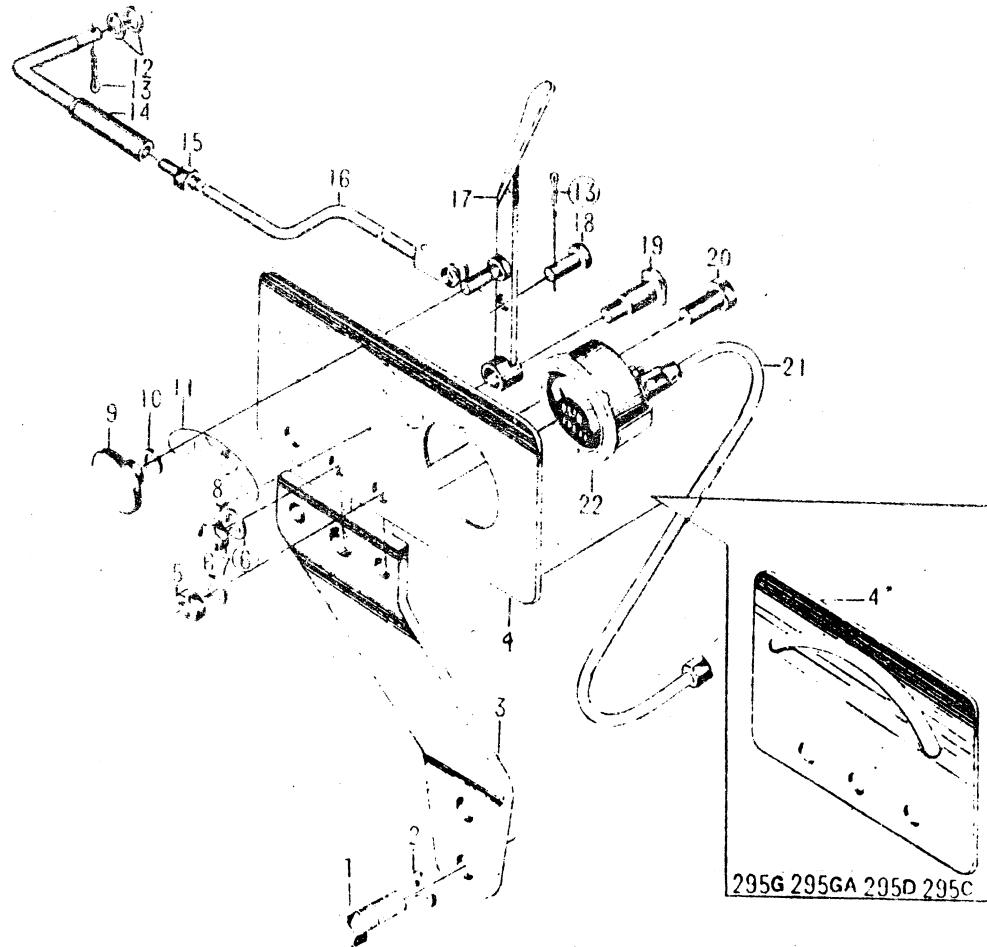


(295C) Sea Water Cooling Assembly

Ser No	Parts No	Name of Parts	Qty
			295C
1	GB898 88	Stud M8×16	8
2	295C 15002	Gasket of fresh water hole	2
3	295C 15030	Fresh water inlet tube	1
4	GB93 87	Lock washer 8	8
5	GB6170 86	Nut M8	8
6	295 06400	Tube clamp(1½")	6
7	295C 15007	Fresh water, rubber tube	2
8	295C 15200	Heat converter sub-assembly	1
9	295C 15003	Gasket of sea water hole	2
10	295C 15020	Sea water outlet tube	1
11	295C 15005	Inner cloth tube, sea water	1
12	295C 15010	Sea water inlet tube	1
13	295C 15300	Tube clamp (1")	2
14	295C 15006	Sea water pump rubber tube	1
15	295C 15040	Fresh water outlet tube	1
16	295C 15050	Sea water pump outlet - inlet tube	4
17	295C 15100	Sea water pump sub - assembly	1
18		V - belt B1041	1

(295G, 295GA, 295GJ, 295D, 295C)

Throttle Controlling Assembly



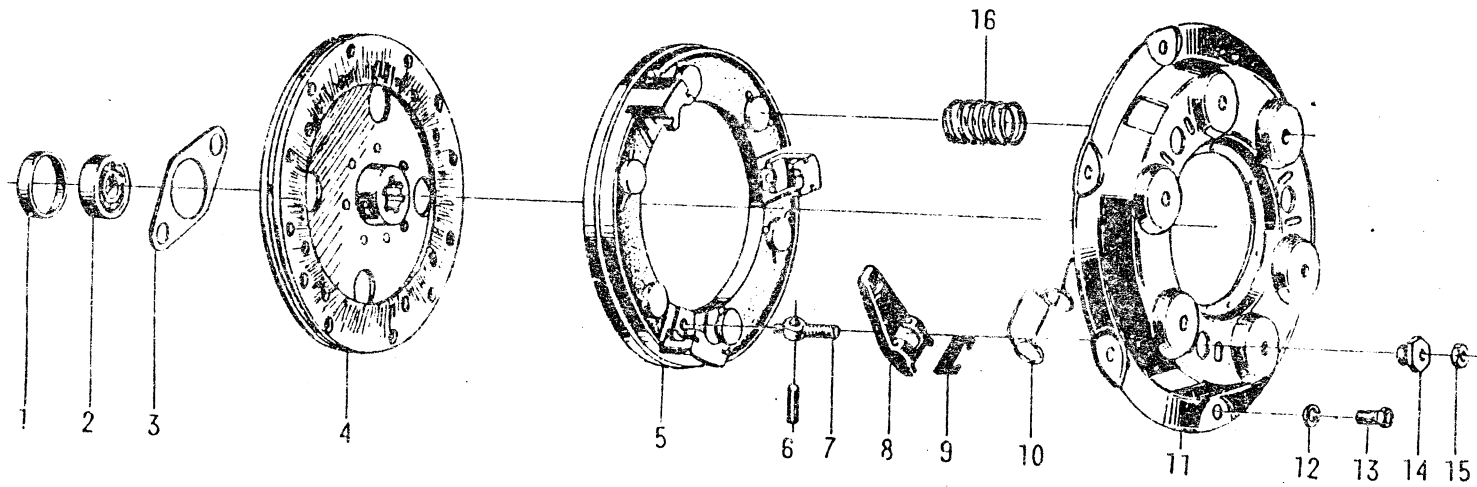
(295G、295GA、295GJ、295D、295C)

Throttle Controlling Assembly

Ser No	Parts No	Name of Parts	Qty				
			295G	295GA	295GJ	295D	295C
1	GB5783--86	Hex. bolt M10×20	2	2	2	2	2
2	GB93--87	Lock washer 10	2	2	2	2	2
3	295G--11001A	Bracket	1	1	1	1	1
4	295GJ--11002	Controlling plate			1		
4	295G--11002A	Controlling plate	1	1		1	1
5	GB6170--86	Nut M8	2	2	2	2	2
6	GB93--87	Lock washer 8	3	3	3	3	3
7	GB923--88	Cap nut M8	1	1	1	1	1
8	GB827--86	Rivet 2×5	2	2	2	2	2
9	295G--11004	Tightening cap	1	1	1	1	1
10	GB97.1--86	Flat washer 8	1	1	1	1	1
11	295G--11006	Indicator plate	1	1	1	1	1
12	GB97.1--86	Flat washer 5	2	2	2	2	2
13	GB91--86	Split pin 2×12	2	2	2	2	2
14	295G--11300	Throttle pull rod adapter	1	1	1	1	1
15	GB6170--86	Nut M5	1	1	1	1	1
16	295G--11200	Throttle pull rod	1	1	1	1	1
17	295G--11100	Throttle handle	1	1	1	1	1
18	295G--11005	Pin shaft	1	1	1	1	1
19	295G--11003	Bracket shaft	1	1	1	1	1
20	GB5783--86	Hex. bolt M8×20	2	2	2	2	2
21	295G--12600	Engine oil pressure gauge connector tube			1		
22	295G--12019	Engine oil pressure gauge			1		

(295G, 295GA)

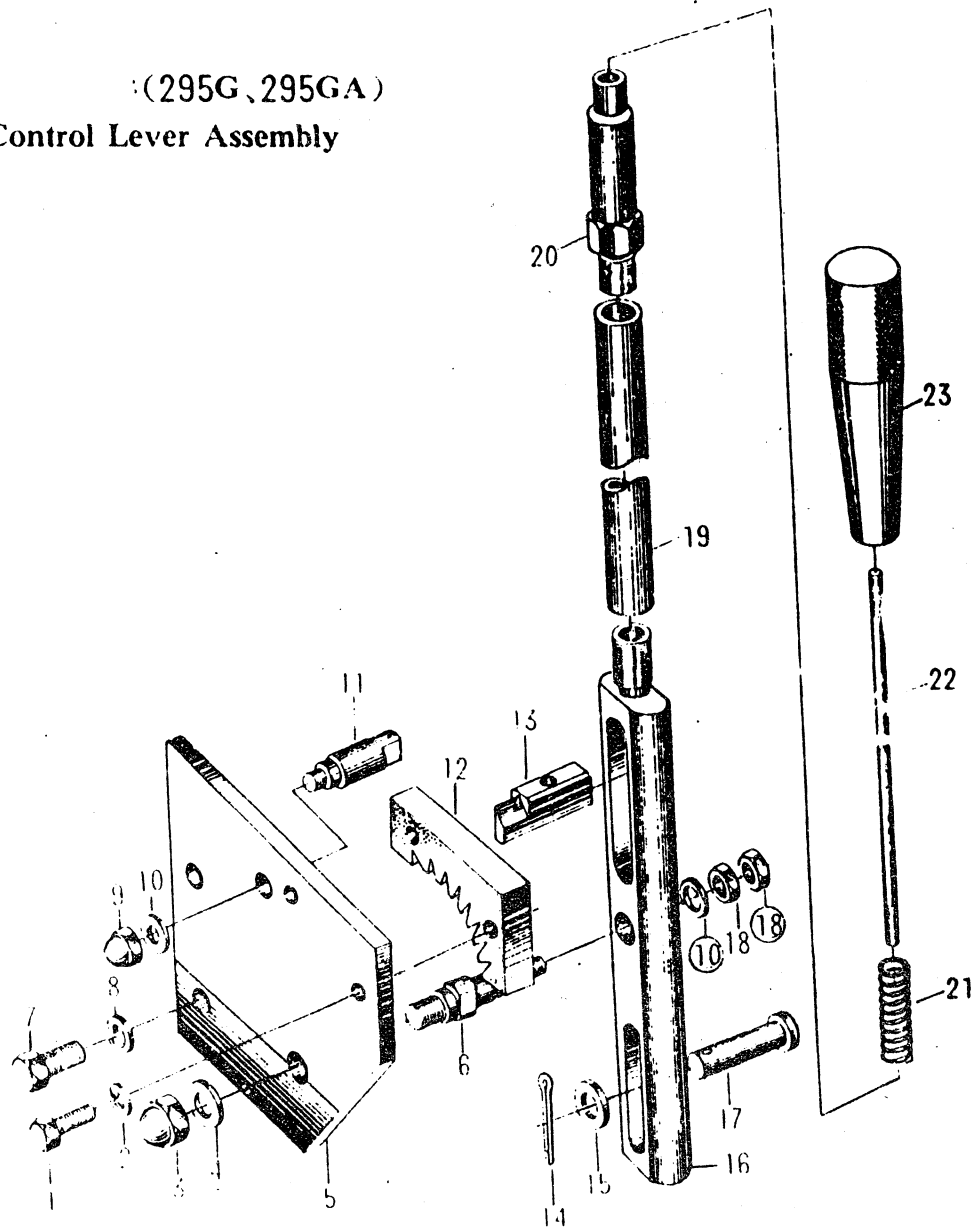
Clutch



(295G, 295GA) Clutch

Ser No	Parts No	Name of Parts	Qty	
			295G	295GA
1	295G--17022	Clutch bearing stop ring	1	1
2	GB278--82	Bearing 60203	1	1
3	295G--17023	Clutch bearing stop plate	1	1
4	295G--17300	Clutch driven plate assembly	1	1
5	25. 21J. 118	Clutch pressure plate	1	1
6	GB119--86	Pin B8×24	3	3
7	25. 21J. 123	Release lever adjusting bolt	3	3
8	25. 21J. 120	Release lever	3	3
9	25. 21J. 121	Release lever strut	3	3
10	25. 21J. 122	Release lever spring	3	3
11	25. 21J. 117	Clutch cover	1	1
12	GB93--87	Lock washer 8	6	6
13	GB5783--86	Hex. bolt M8×20	6	6
14	25. 21J. 124	Release lever adjusting nut	3	3
15	GB6173--86	Nut M8×1	3	3
16	25. 21J. 119	Clutch pressure spring	6	6

(295G, 295GA)
Clutch Control Lever Assembly

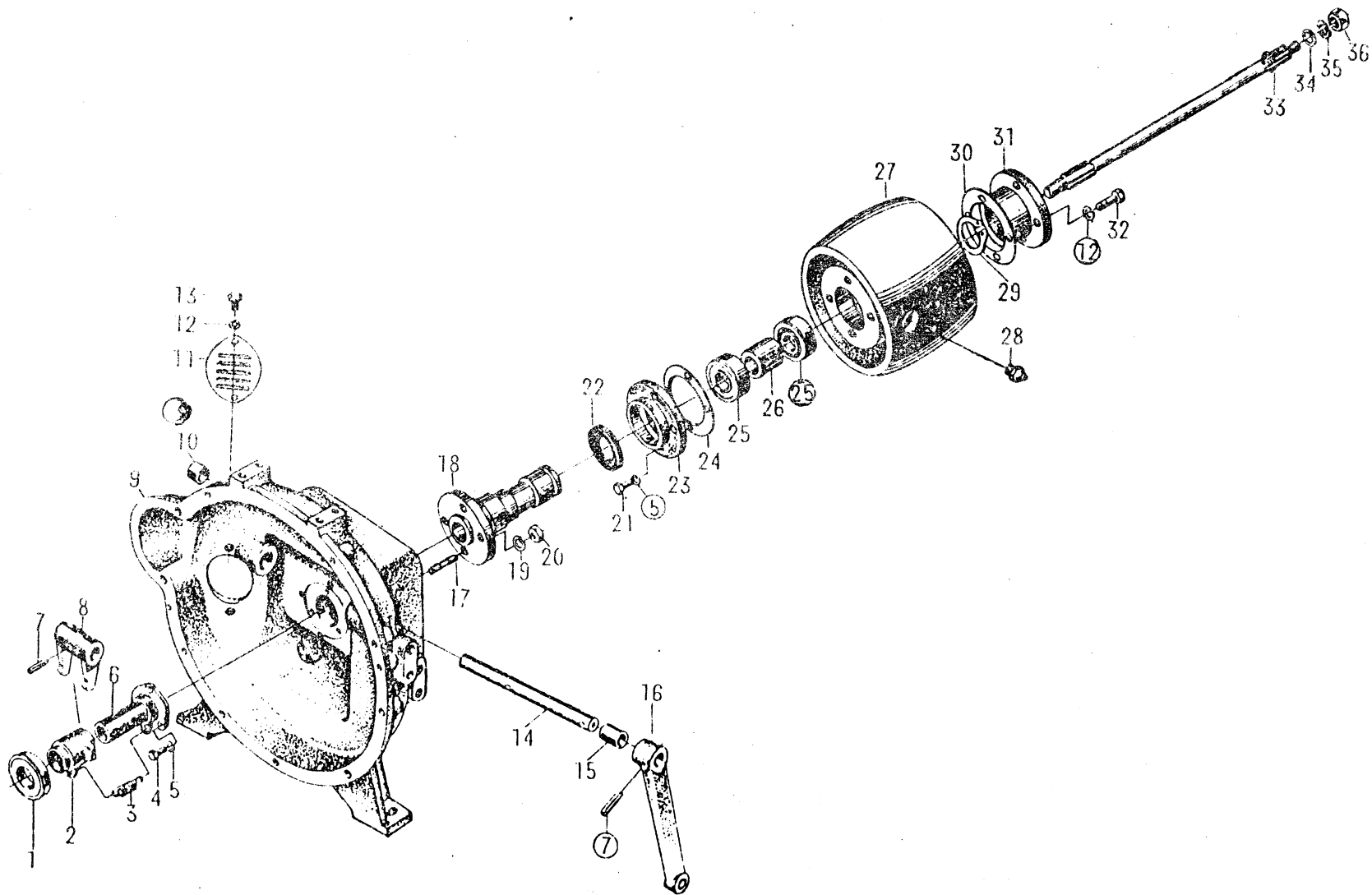


(295G、295GA) Clutch Control Lever Assembly

Ser No	Parts No	Name of Parts	Qty	
			295G	295GA
1	GB5783—86	Hex. bolt M8×20	2	2
2	GB93—87	Lock washer 8	2	2
3	GB923 88	Cap nut M12	1	1
4	GB97.1—85	Flat washer 12	1	1
5	295G—17104	Control plate	1	1
6	295G—17105	Fixing pin shaft	1	1
7	GB5783—86	Hex. bolt M10×30	2	2
8	GB93—87	Lock washer 10	2	2
9	GB923—88	Cap nut M8	1	1
10	GB97.1—85	Flat washer 8	2	2
11	295G—17107	Stopping shaft	1	1
12	295G—17108	Position rack	1	1
13	295G—17106	Limit claw	1	1
14	GB91—86	Pin 2.5×24	1	1
15	GB97.1—85	Flat washer 10	1	1
16	295G—17101	Control rod	1	1
17	295G—17102	Pin shaft	1	1
18	GB6170—86	Nut M8	2	2
19	295G—17109	Controlling connect rod	1	1
20	295G—17110	Handle connect rod	1	1
21	295G—17112	Spring	1	1
22	295G—17111	Control pull rod	1	1
23	295G—17120	Controlling handle sub-assembly	1	1

(295G, 295GA)

Belt Pulley Power Output



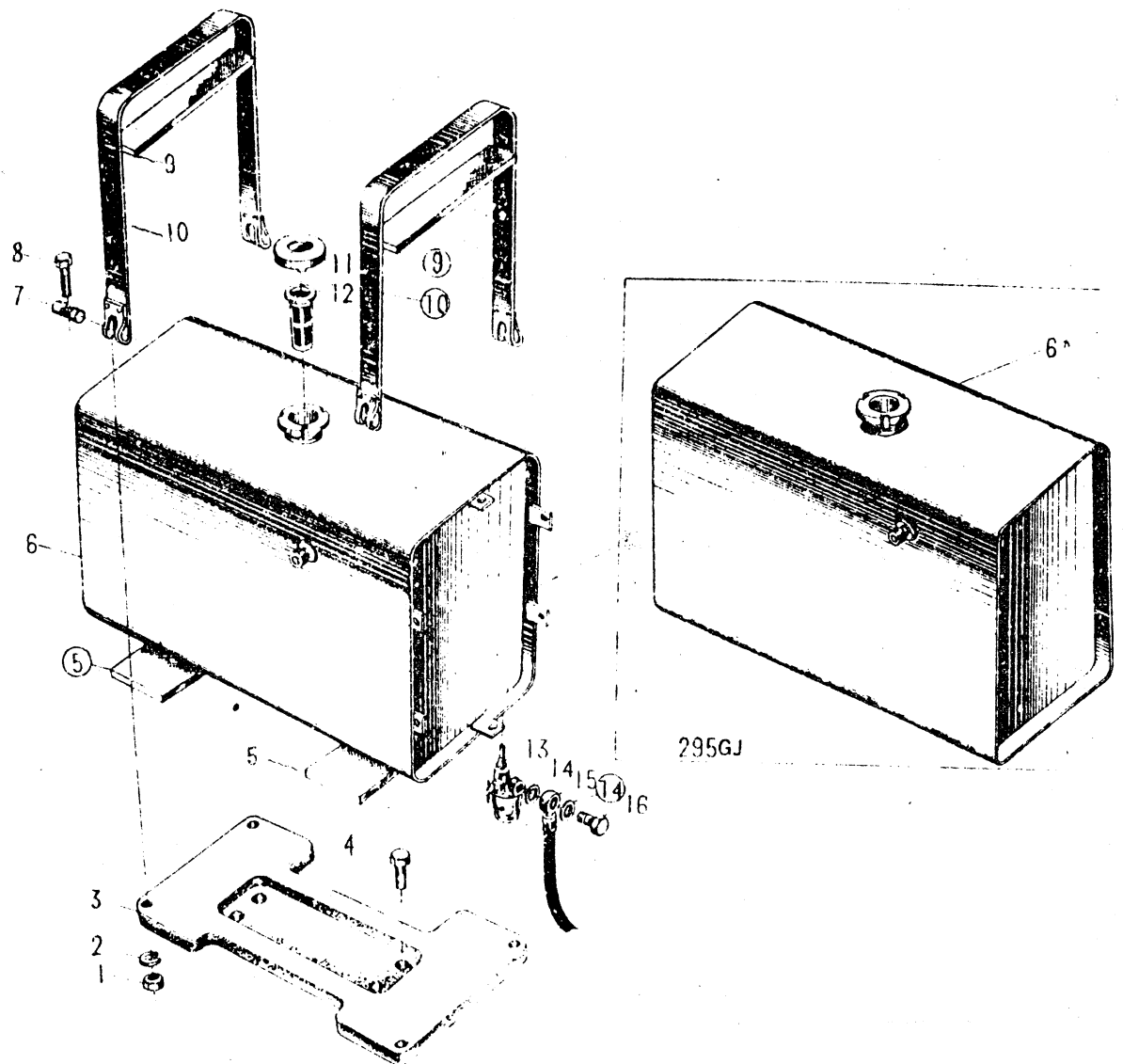
(295G, 295GA) Belt Pulley Power Output

Ser No	Parts No	Name of Parts	Qty	
			295G	295GA
1		Bearing 688908	1	1
2	25.211.130	Release bearing seat	1	1
3	295G 17016	Release bearing seat retracting spring	1	1
4	GB5783-86	Hex. bolt M8×20	3	3
5	GB93-87	Lock washer 8	7	7
6	295G 17013	Release bearing seat bracket	1	1
7	GB879-86	Pin 80×410	2	2
8	295G 17014	Release fork	1	1
9	295G 17001	Clutch housing	1	1
10	295G 17019	Bushing	1	1
11	295G 17021	Cover	1	1
12	GB93-87	Lock washer 10	6	6
13	GB5783-86	Hex. bolt M10×16	2	2
14	295G 17015	Release fork shaft of clutch	1	1
15	295G 17020	Bushing	1	1
16	295G 17017	Clutch release arm	1	1
17	GB898-88	Stud AM12×30	4	4
18	295G 17002	Bracket shaft	1	1
19	GB93-87	Lock washer 12	4	4
20	GB6170-86	Nut M12	4	4
21	GB5783-86	Hex. bolt M8×22	4	4
22	HG4-692-67	Oil seal PG60-80×12	1	1

Ser No	Parts No	Name of Parts	Qty	
			295G	295GA
23	295G 17001	Bearing cap	1	1
24	295G 17006	Gasket	1	1
25	GB278--82	Bearing 60210	2	2
26	295G 17005	Sleeve	1	1
27	295G 17003	Belt pulley	1	1
28	GB1152--74	Grease nipple M10×1	1	1
29	GB894.1-86	Stop ring 50	1	1
30	295G 17007	Gasket	1	1
31	295G 17008	Torque transmitting cover	1	1
32	GB5783--86	Hex. bolt M10×25	4	4
33	295G--17009	Clutch shaft	1	1
34	295G--17010	Stop plate	1	1
35	GB93--76	Lock washer 18	1	1
36	GB6171--86	Nut M18×1.5	1	1

(295G, 295GA, 295GJ, 295D)

Fuel Tank Assembly

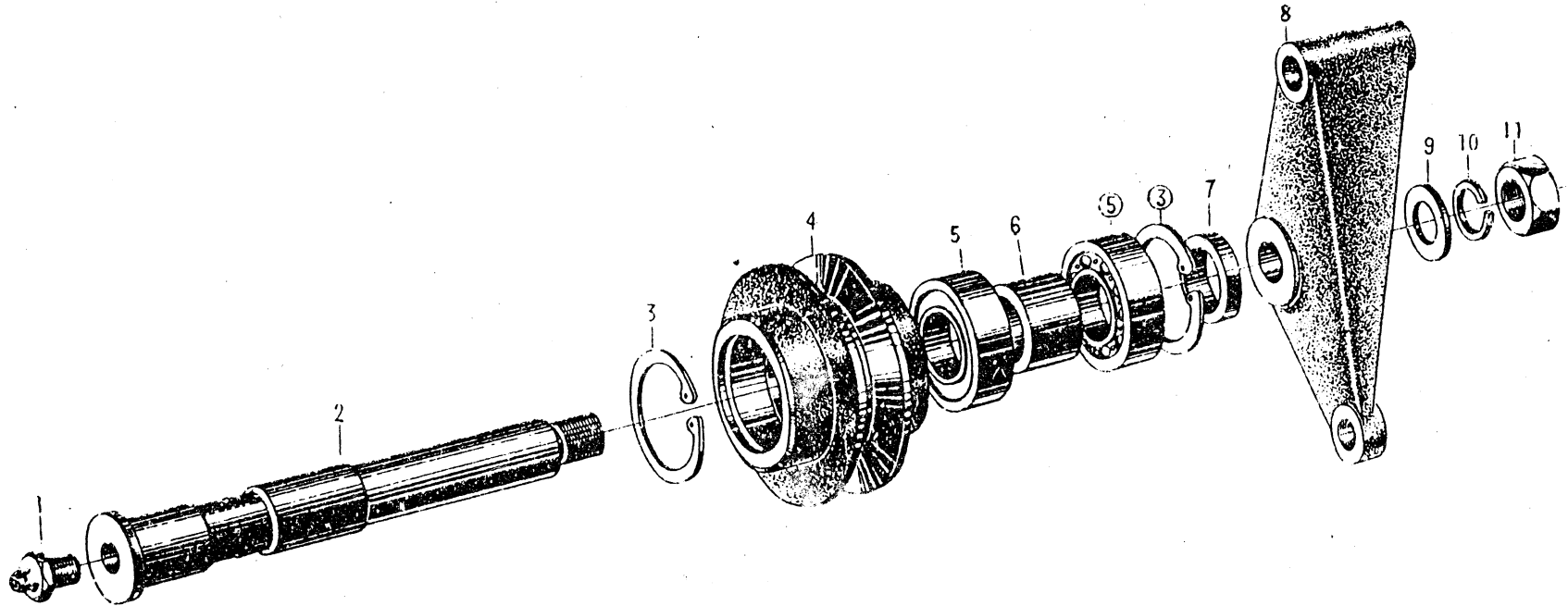


(295G、295GA、295GJ、295D)

Fuel Tank Assembly

Ser No	Parts No	Name of Parts	Qty			
			295G	295GA	295GJ	295D
1	GB6170 86	Nut M8	4	4	4	4
2	GB93 87	Lock washer 8	4	4	4	4
3	295G 17011	Fuel tank bracket plate	1	1	1	1
4	GB5783 86	Hex. bolt M10×30	4	4	4	4
5	295G 17012	Fuel tank gasket	2	2	2	2
6	295G 16100	Fuel tank	1	1		1
6	295GJ 16100	Fuel tank			1	
7	295G 16004	Fix pin	4	4	4	4
8	GB5782 86	Hex. bolt M8×40	4	4	4	4
9	295G 16005	Fuel tank upper gasket	2	2	2	2
10	295G 16200	Fuel tank bind	2	2	2	2
11	295G 16400	Fuel tank cap	1	1	1	1
12	295G 16500	Filler hole strainer	1	1	1	1
13	295G 16300	Sediment cap	1	1	1	1
14	295T 01044	Air pump fuel return tube connector gasket	2	2	2	2
15	295G 16600	Fuel outlet tube	1	1	1	1
16	295G 16002	Hollow bolt	1	1	1	1

(295GJ) Tensioner Sub-assembly

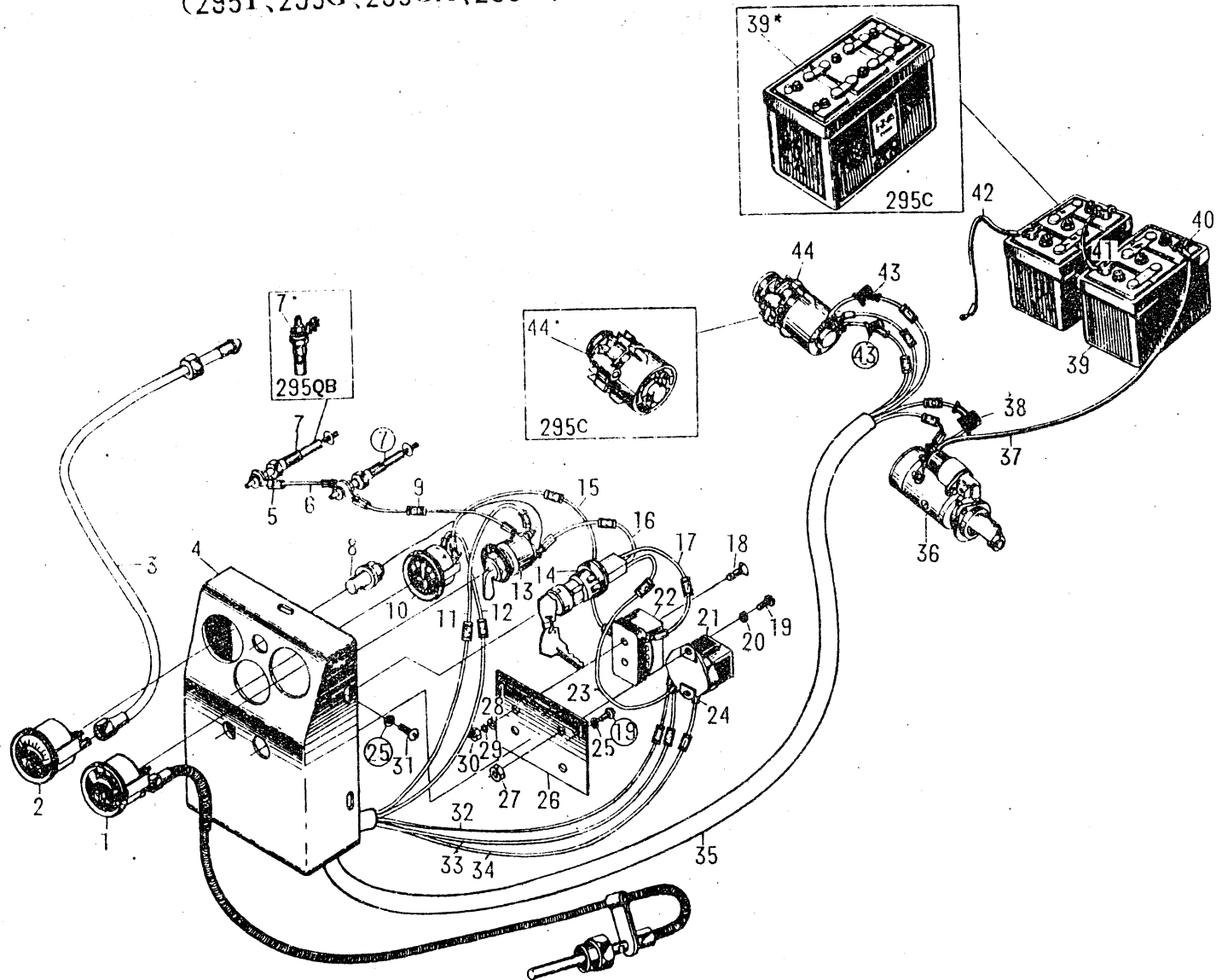


(295GJ) Tensioner Sub-Assembly

Ser No	Parts No	Name of Parts	Qty
			295GJ
1	GB1152-74	Grease nipple M10×1	1
2	295GJ-01902	Tensioner shaft	1
3	GB893.1-86	Stop ring 40	2
4	295GJ-01905	Tensioner	1
5	GB278-82	Bearing 60203	2
6	295GJ-01904	Bearing spacer ring	1
7	295GJ-01903	Bearing washer	1
8	295GJ-01901	Tensioner bracket lump	1
9	GB97.1-85	Flat washer 12	1
10	GB93-87	Lock washer 12	1
11	GB6170-86	Nut M12	1

(295T, 295G, 295GA, 295D, 295C, 295QB)

Electric Instrument Assembly



(295T, 295G, 295GA, 295D, 295C, 295QB)

Electric Instrument Assembly

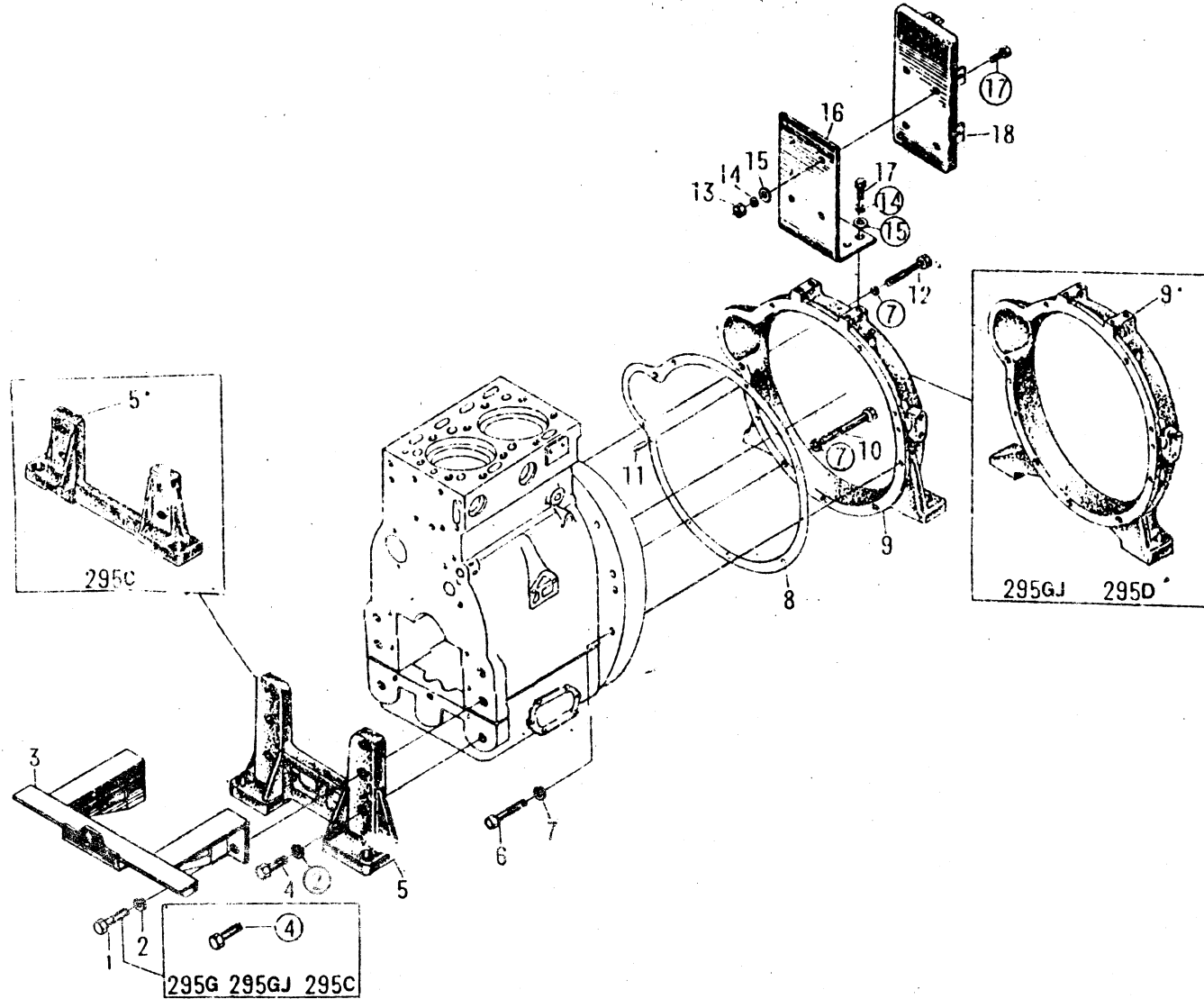
Ser No	Parts No	Name of Parts	Qty					
			295T	295G	295GA	295D	295C	295QB
1	295G 12010	Temperature gauge (WT-120)		1	1	1	1	
2	295G 12019	Engine oil pressure gauge (YT-120)		1	1	1	1	
3	295G--12600	Engine oil pressure gauge tubular connector		1	1	1	1	
4	295G--12510	Instrument panel weldment		1	1	1	1	
5	295G--12016	Insulate sleeve (Middle)		6	6	6	6	
6		Wire (From preheat starter switch 2 to electric heating plug)		1	1	1	1	
7	295 12004	Electric heating plug	2	2	2	2	2	
7	295QB 12004	Preheating plug						1
8	295G 12021	Gauge lamp		1	1	1	1	
9	295G 12017	Plates of electric wire		15	15	15	15	
10	295G 12008	Galvanometer(307-C Type)		1	1	1	1	
11		Wire (From preheat starter switch to start-motor)		1	1	1	1	
12		Wire (From galvanometer (-) to start-motor)		1	1	1	1	
13	295G 12005	Pre-heating starter switch (JK 290)		1	1	1	1	
14	295G 12006	Electric lock (JK 422)		1	1	1	1	
15		Wire (From galvanometer (+) to fuse box)		1	1	1	1	
16		Wire (From electric key 3 to starter switch power source)		1	1	1	1	
17		Wire (From electric key power source 1 to fuse box)		1	1	1	1	

Ser No	Parts No	Name of Parts	Qty					
			295T	295G	295GA	295D	295C	295QB
18	GB68--85	Screw M5×16		2	2	2	2	
19	GB67--85	Screw M6×10		4	4	4	4	
20	GB93--87	Lock washer 6		2	2	2	2	
21	295-12002	Relay governor (FT-70)		1	1	1	1	
22	295G--12007	Fuse box (B×503)		1	1	1	1	
23		Wire (From relay governor spark to electric key2)		1	1	1	1	
24	295G-12015	Insulate sleeve (Small)		9	9	9	9	
25	GB97.1--85	Flat washer 6		8	8	8	8	
26	295G--12501--1	Instrument panel		1	1	1	1	
27	GB6170--86	Nut M6		2	2	2	2	
28	GB97.1--85	Flat washer 5		2	2	2	2	
29	GB93--87	Lock washer 5		2	2	2	2	
30	GB6170--86	Nut M5		2	2	2	2	
31	GB67--85	Screw M6×12		6	6	6	6	
32		Wire (From generator (-) to relay governor)		1	1	1	1	
33		Wire (From generator (+) to relay governor spark)		1	1	1	1	
34		Wire (From generator (F) to relay governor magnetic field)		1	1	1	1	
35		Wire casing pipe		1	1	1	1	
36	295-12003	Starter motor (QD12)	1	1	1	1	1	1
37	295G--12200	Cable (From motor to battery)		1	1	1	1	

Ser No	Parts No	Name of Parts	Qty					
			295T	295G	295GA	295D	295C	295QB
38	295G--12014	Rubber cap (Big)		1	1	1	1	
39	295G--12009	Battery(3--Q--120)		2	2	2		
39*	295C--12009	Battery(6--JC--195)					1	
40	295G--12100	Battery clamp		4	4	4	2	
41	295G--12300	Battery series connecting cable		1	1	1		
42	295G--12400	Battery ground cable		1	1	1	1	
43	195G--12013	Rubber cap (Small)		2	2	2	2	
44	295--12001	Silicon rectifier generator(JF01C)	1	1	1	1		1
	295--12001A	Silicon rectifier generator(ZJF200)	1	1	1	1		1
44*	295C--12001	Silicon rectifier generator(JF11N)					1	

(295G, 295GA, 295GJ, 295D)

Front & Rear Bracket



(295G, 295GA, 295GJ, 295D, 295C)

Front & Rear Bracket

Ser No	Parts No	Name of Parts	Qty				
			295G	295GA	295GJ	295D	295C
1	GB5782--86	Hex.bolt M14×50		4		4	
2	GB93--87	Lock washer14	6	6	6	6	4
3	295GA--17000	Radiator bracket		1		1	
4	GB5783--86	Hex.bolt M14×45	6	2	6	2	4
5	295G--01039	Front bracket	1	1	1	1	
5*	295C--01040	Front bracket					1
6	GB5782--86	Hex.bolt M12×85	5	5	5	5	5
7	GB93--87	Lock washer 12	10	10	9	9	9
8	295G--17108	Paper gasket	1	1	1	1	1
9	295C--01043	Rear bracket					1
9*	295D--01043	Rear bracket			1	1	
10	GB5782--86	Hex.bolt M12×160	3	3	3	3	3
11	GB119--86	Pin D12×24	2	2	2	2	2
12	GB5782--86	Hex.bolt M12×95	2	2	1	1	1
13	GB6172--86	Nut M10					4
14	GB93--87	Lock washer 10					8
15	GB97.1--85	Flat washer 10					8
16	295C--12021	Instrument panel bracket					1
17	GB5783--86	Hex.bolt M12×20					8
18	295C--12700	Electric apparatus rear hood weldment					1